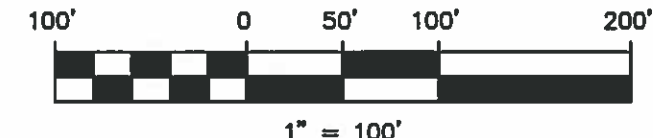


ANNEXATION
PLAT & DESCRIPTION
ACCEPTABLE
CORNELL R. ROBERTSON, P.E., P.S.
FRANKLIN COUNTY ENGINEER

By FM Date 8/24/17






5.96± Ac.

Length of Contiguity: ±1416.4 feet
Total Length of Perimeter: ±2222.5 feet
Percentage of Contiguity : ±63.7%

No islands of township property are created by this annexation.

Legend

-  Area to be Annexed
-  Existing City of Columbus Corp Line
-  Proposed City of Columbus Corp Line



[Signature]

Douglas R. Hock, P.S. 7661

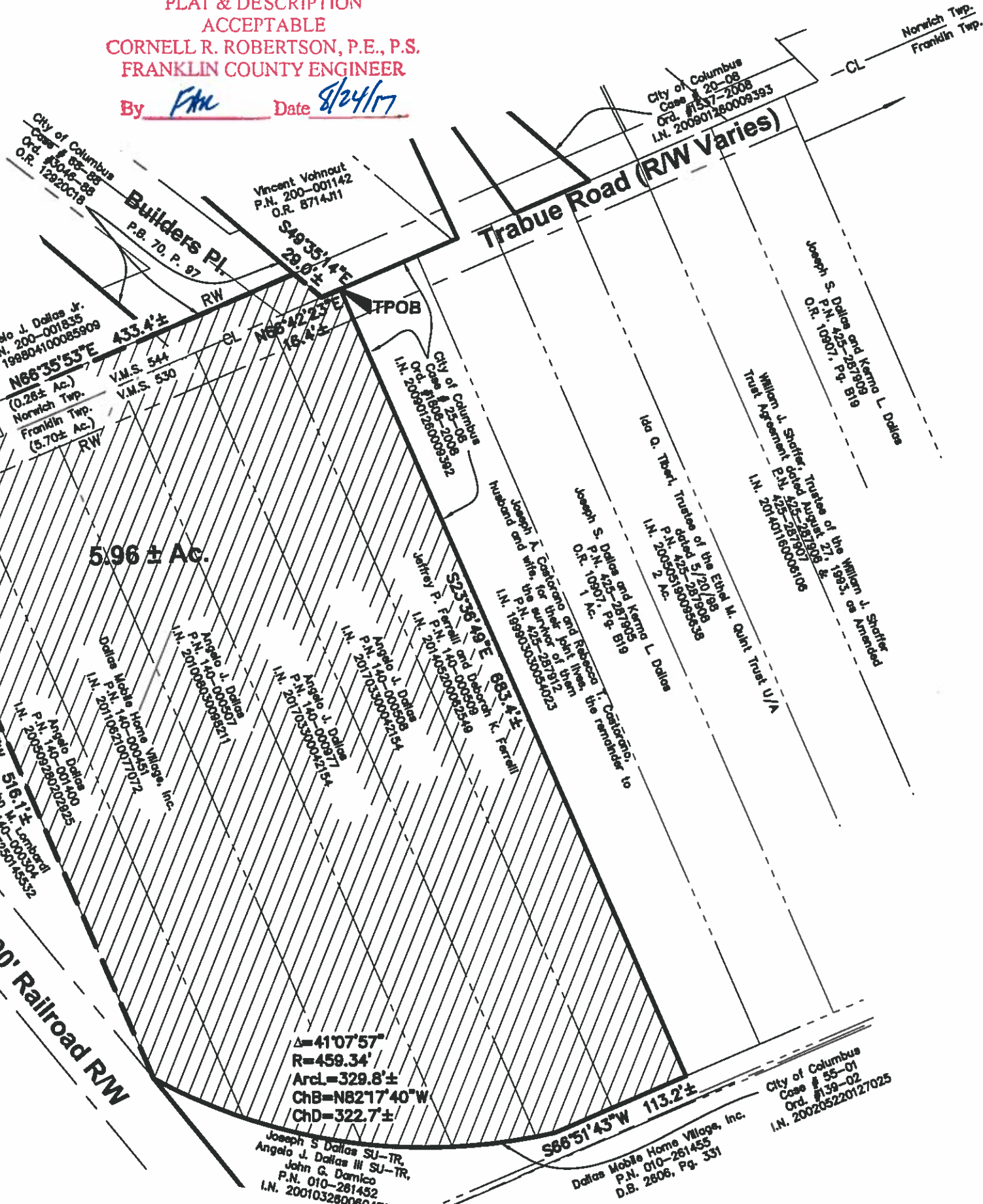
Date:

Advanced Civil Design, Inc
422 Beecher Road
Gahanna, OH 43230
Phone 614-428-7750

Job No.: 16-0103-65
Date: 8/18/2017



Location Map - NTS



RECEIVED
AUG 24 2017
Franklin County Engineer
Cornell R. Robertson, P.E., P.S.

**5.96± ACRE ANNEXATION
FROM THE TOWNSHIPS OF
FRANKLIN AND NORWICH
TO THE CITY OF COLUMBUS
(NORWICH TWP. 0.26± AC.)
(FRANKLIN TWP. 5.70± AC.)**
Townships of Franklin and Norwich,
Franklin County, Ohio
Virginia Military Survey Nos. 530 & 544