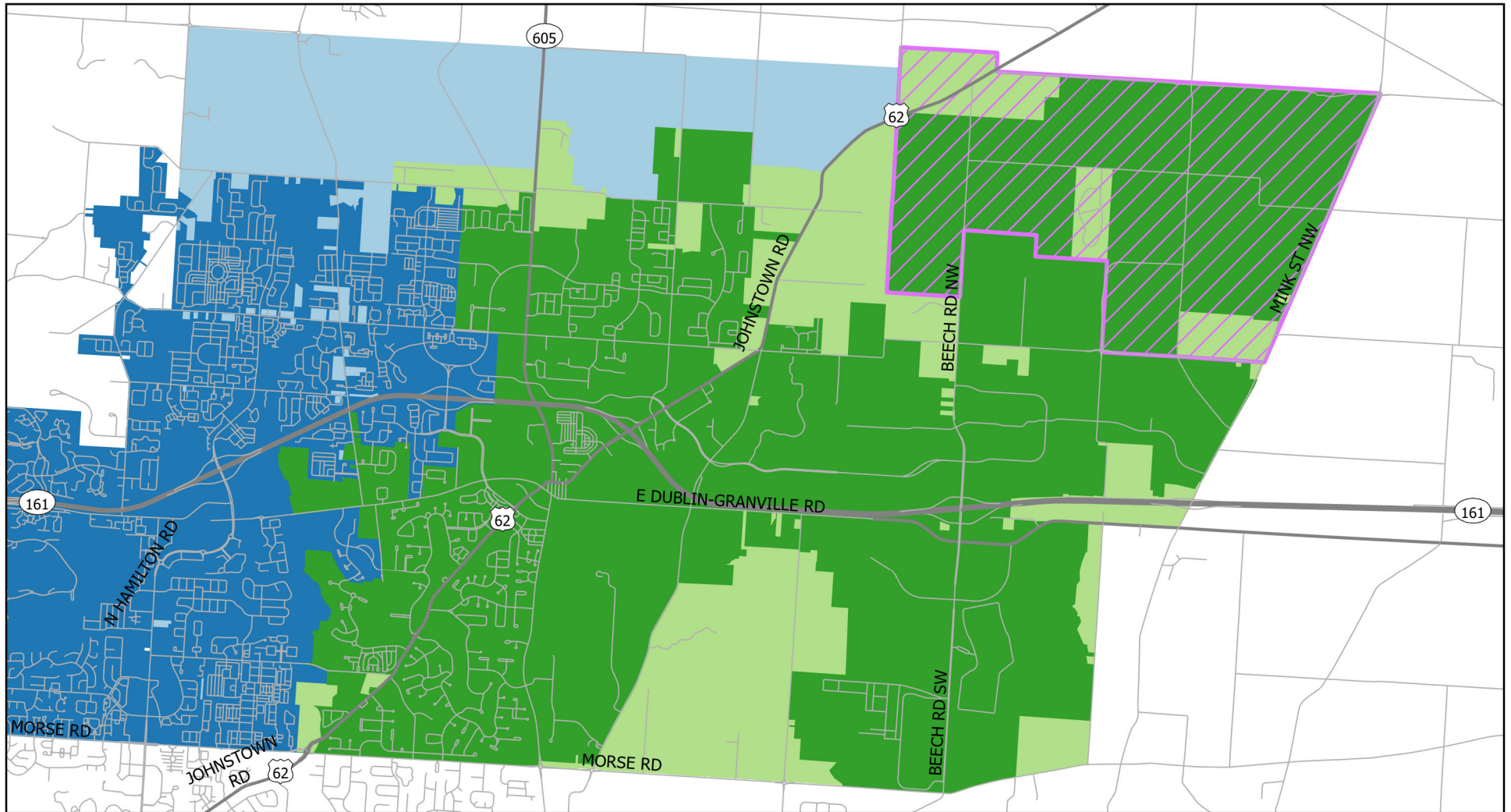


New Albany - Columbus Agreement Exhibit A








New Albany Water & Sewer Contract Service Area Boundaries:

0 0.5 1 2 Miles

THE CITY OF
COLUMBUS
ANDREW J. GINTHER, MAYOR

DEPARTMENT OF
PUBLIC UTILITIES

- | | |
|---|--|
|  City of Columbus Corporation Boundary |  Area A - Columbus Expansion Area |
|  City of New Albany Corporation Boundary |  Area B - New Albany Expansion Area |
| |  Area C - New Revenue/Equity Sharing Area |

