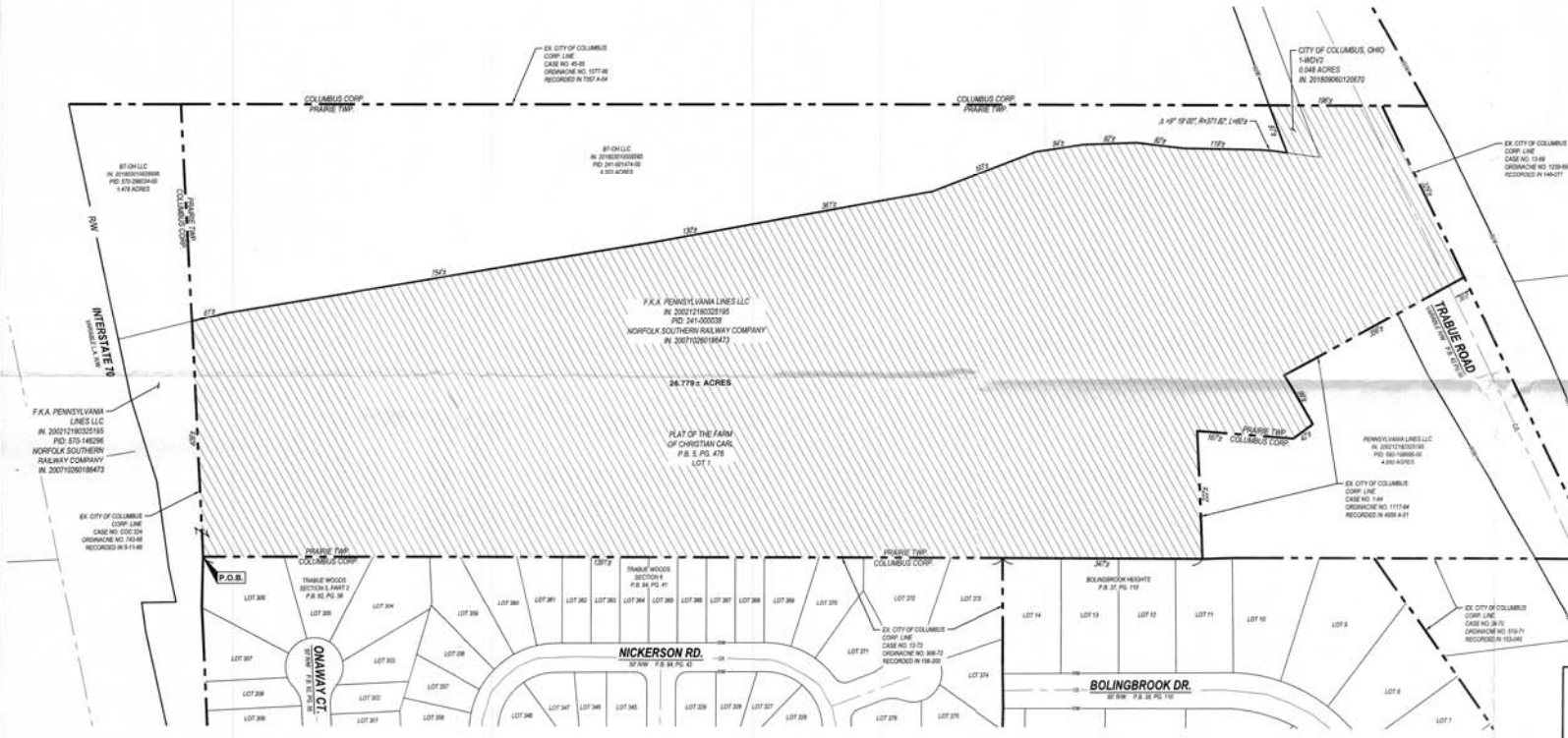
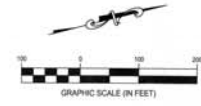


**PROPOSED ANNEXATION OF 26.779± ACRES  
FROM PRAIRIE TOWNSHIP  
TO CITY OF COLUMBUS  
SITUATED IN THE STATE OF OHIO, COUNTY OF FRANKLIN, TOWNSHIP OF PRAIRIE  
VIRGINIA MILITARY SURVEY NO. 2988**



ANNEXATION  
PLAT & DESCRIPTION  
ACCEPTABLE  
CORNELL B. ROBERTSON, P.E., P.S.  
FRANKLIN COUNTY ENGINEER  
By: [Signature] Date: 03-21-2022



- LEGEND**
- EXIST. CITY OF COLUMBUS CORP. LINE
  - EXIST. PARCEL LINE
  - PROP. ANNEXATION CORP. LINE
  - ▨ PROP. AREA TO BE ANNEXED (26.779± ACRES)

**CONTIGUITY NOTE:**  
THE TOTAL PERIMETER OF ANNEXATION AREA IS 5681 FEET, OF WHICH 886 FEET ARE CONTIGUOUS WITH THE CITY OF COLUMBUS BY ORDINANCE NUMBER 1117-84, 1391 FEET ARE CONTIGUOUS WITH THE CITY OF COLUMBUS BY ORDINANCE NUMBER 906-72, 409 FEET ARE CONTIGUOUS WITH THE CITY OF COLUMBUS BY ORDINANCE NUMBER 743-66, 329 FEET ARE CONTIGUOUS WITH THE CITY OF COLUMBUS BY ORDINANCE NUMBER 1239-89 AND 196 FEET ARE CONTIGUOUS WITH THE CITY OF COLUMBUS BY ORDINANCE NUMBER 1077-86 GIVING 58% CONTIGUITY.

JEFFREY A. MILLER, P.S. 7211  
DATE: 3-4-22  
STATE OF OHIO  
FRANKLIN COUNTY ENGINEER

**SURVEYOR:**  
CESO, INC.  
2800 CORPORATE EXCHANGE DR, STE 400  
COLUMBUS, OH 43221

<b>26.779± ACRES ANNEXATION</b>	
PRAIRIE TOWNSHIP SCALE: 1" = 100'	FRANKLIN COUNTY, OHIO DATE: 03/12/2022
DESIGN: DRAWN: CHECKED: ALB	JOB NO.: 76182 SHEET NO.: 1 OF 1
 WWW.CESOINC.COM	