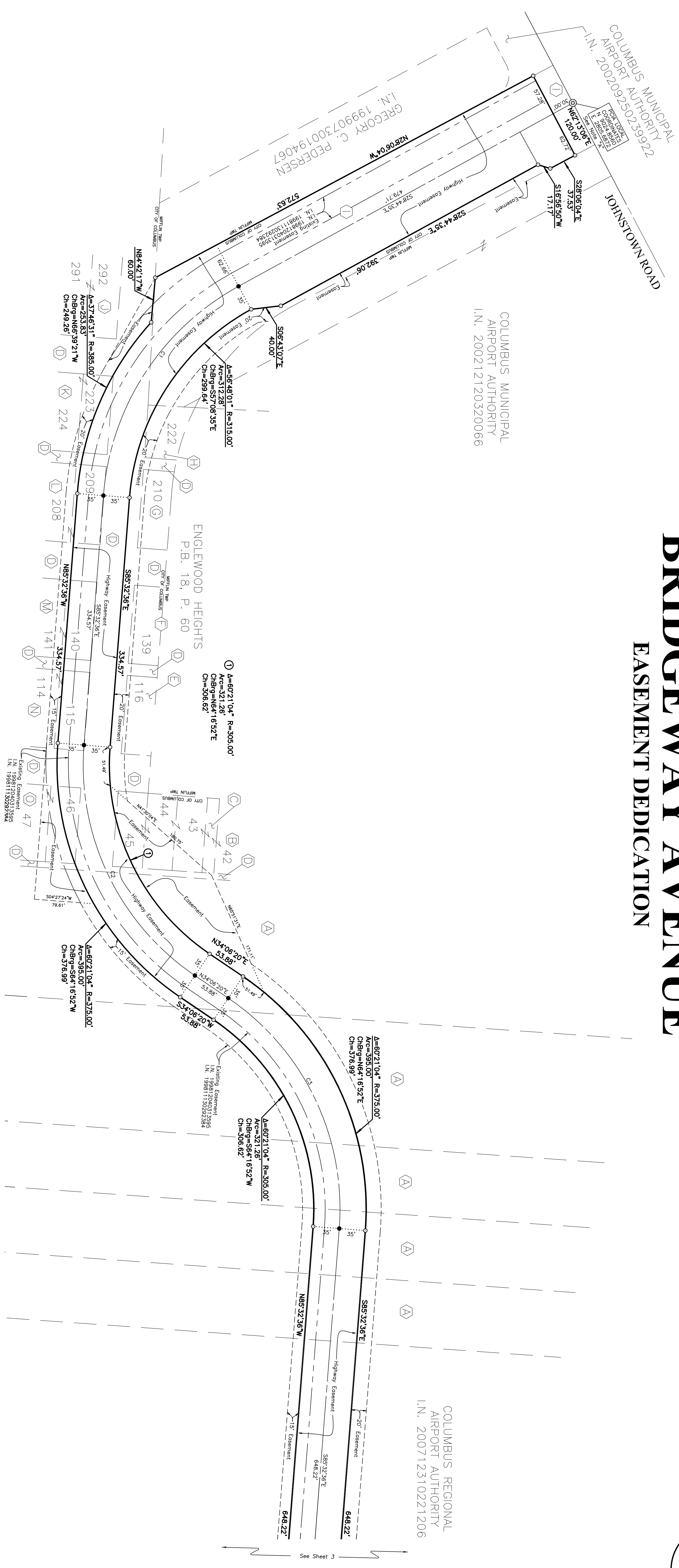


# BRIDGEWAY AVENUE

## EASEMENT DEDICATION



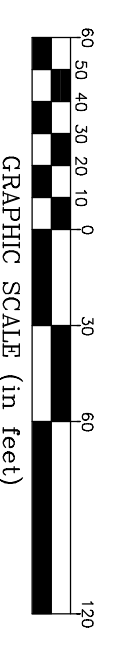
COLUMBUS MUNICIPAL  
AIRPORT AUTHORITY  
I.N. 200212120320066

COLUMBUS REGIONAL  
AIRPORT AUTHORITY  
I.N. 200712310221206

**NOTE "A" - PCIA LOCAL COORDINATES:** PCIA Port Columbus International Airport Local Coordinates are based on the GPS survey of Port Columbus International Airport, Franklin County, Ohio in 2001. Coordinate information can be found in the Engineers Office, Franklin County, Ohio.

CURVE NO.	DELTA	RAIUS	LENGTH	CHORD BEARING	CHORD DISTANCE
C1	56°48'01"	350.00'	346.97'	S 57°08'35" E	332.94'
C2	60°21'04"	340.00'	358.13'	N 64°16'52" E	341.80'
C3	60°21'04"	340.00'	358.13'	S 64°16'52" W	341.80'
C4	15°08'33"	500.00'	132.14'	N 86°53'08" E	131.76'
C5	61°50'36"	500.00'	539.68'	N 69°45'51" W	513.89'
C6	46°30'04"	340.00'	275.94'	S 62°05'35" E	268.43'

- (A) COLUMBUS REGIONAL AIRPORT AUTHORITY  
I.N. 200712310221206
- (B) COLUMBUS MUNICIPAL AIRPORT AUTHORITY  
O.R. 25525F18
- (C) R.R. 16, P. 127
- (D) R.R. 27, P. 81
- (E) COLUMBUS MUNICIPAL AIRPORT AUTHORITY  
O.R. 25525G04
- (F) COLUMBUS MUNICIPAL AIRPORT AUTHORITY  
O.R. 34026H04
- (G) COLUMBUS MUNICIPAL AIRPORT AUTHORITY  
O.R. 25525H05
- (H) COLUMBUS MUNICIPAL AIRPORT AUTHORITY  
O.R. 25525H06
- (I) COLUMBUS MUNICIPAL AIRPORT AUTHORITY  
I.N. 199802050026949
- (J) COLUMBUS MUNICIPAL AIRPORT AUTHORITY  
O.R. 30313H19
- (K) COLUMBUS MUNICIPAL AIRPORT AUTHORITY  
O.R. 25525H15
- (L) COLUMBUS MUNICIPAL AIRPORT AUTHORITY  
O.R. 25525H04
- (M) COLUMBUS MUNICIPAL AIRPORT AUTHORITY  
O.R. 25525G12
- (N) COLUMBUS MUNICIPAL AIRPORT AUTHORITY  
O.R. 30313H19
- (O) COLUMBUS MUNICIPAL AIRPORT AUTHORITY  
O.R. 25525F16
- (P) COLUMBUS MUNICIPAL AIRPORT AUTHORITY  
7.348 AC. (DEED)  
O.R. 31349I06



SCALE: 1" = 60'