

EXECUTIVE SUMMARY

A More Sustainable Future for Central Ohio

Solid Waste Management Plan Update



WHAT IS SWACO?

- The Solid Waste Authority of Central Ohio is one of 52 solid waste management entities created by the Ohio Revised Code.
- SWACO's jurisdiction covers Franklin County and all the communities that have the majority of their population within Franklin County.
- SWACO owns and operates the Franklin County Sanitary Landfill.
- SWACO is responsible under state law for developing a plan and implementing programs to achieve the Ohio Environmental Protection Agency's solid waste goals, which include:
 - Reducing Ohio's reliance on landfills.
 - Implementing programs for waste reduction, recycling and reuse.

WHAT IS THE PLAN?

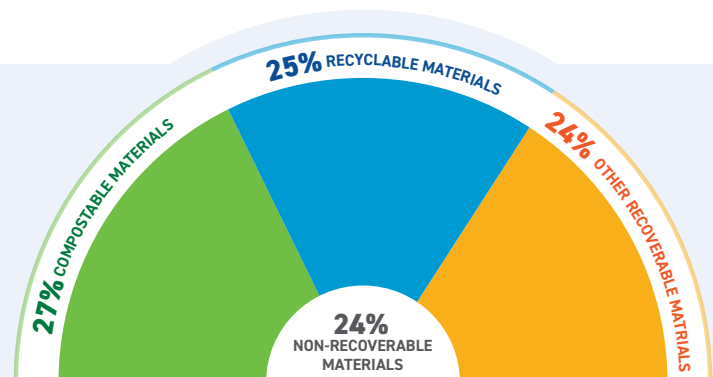
- Our responsibility includes creating a 15-year plan for managing solid waste in our jurisdiction and updating it every five years. This plan is for years 2024 through 2038.

WHAT IS MY COMMUNITY'S ROLE?

- Each of the 41 communities in SWACO's jurisdiction is asked to review the proposed plan update and vote on whether to approve it.

Waste Diversion: We Can Do Better, and This Plan Can Help

76% Potentially Recyclable or Compostable:
 Only 24% of what goes into the landfill today should be there; the rest could have been reused, recycled, composted or recovered for other uses.

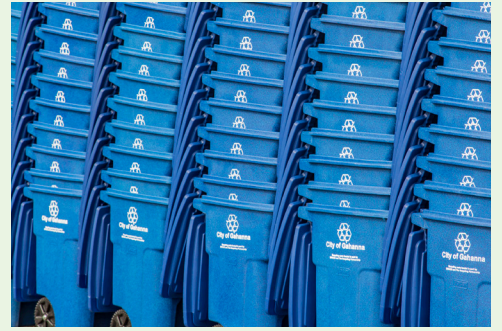


Serving Central Ohio

COMMUNITY



- Contract assistance for trash and recycling services
- Recycling cart initiative
- Recycle Right Education Campaign
- Grants and opt-in contracts for hard to recycle materials



GRANTS



- Communities, schools, nonprofits, public events
- Recycling containers and service, education projects
- Special projects



SCHOOLS



- School Recycling Champions program
- Food waste resources
- Activities and lesson plans
- Field trips



FOOD WASTE INITIATIVE



- Nationally recognized Save More Than Food education campaign
- Compost infrastructure, collection services and drop-offs
- Research, technical assistance, pilot projects



BUSINESSES



- Financial incentives/technical assistance
- Innovative partnerships to reduce the cost of recycling services
- Outreach and recognition

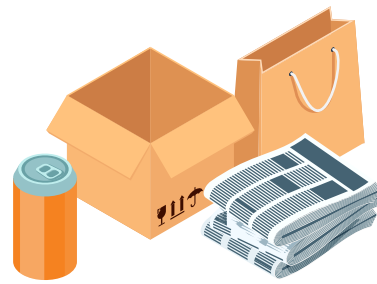


How We Plan to Grow



FOOD WASTE AND ORGANICS

Food is the largest single component of waste in the landfill. We're pursuing a pilot composting facility for food scraps as well as ways to help communities and businesses collect and divert food waste.



BUSINESS RECYCLING

We want to encourage more recycling by businesses, as 60% of the waste delivered to our landfill comes from businesses, not homes. We're expanding financial incentives, startup assistance and education.



HARD-TO-RECYCLE ITEMS

We already host a permanent "household hazardous waste" collection facility and several one-day collection events each year. We're supplementing our current program with a one-stop "Convenience Center" approach that will accept additional hard-to-recycle items from residents. We're also helping communities collect some materials directly, making it even more convenient for residents to manage their materials in an environmentally responsible way.

NEW EDUCATION CENTER

More than 4,000 school children and adults each year tour the landfill; a new building will provide a better, more interactive learning experience.



MORE CAPACITY TO PROVIDE SERVICES

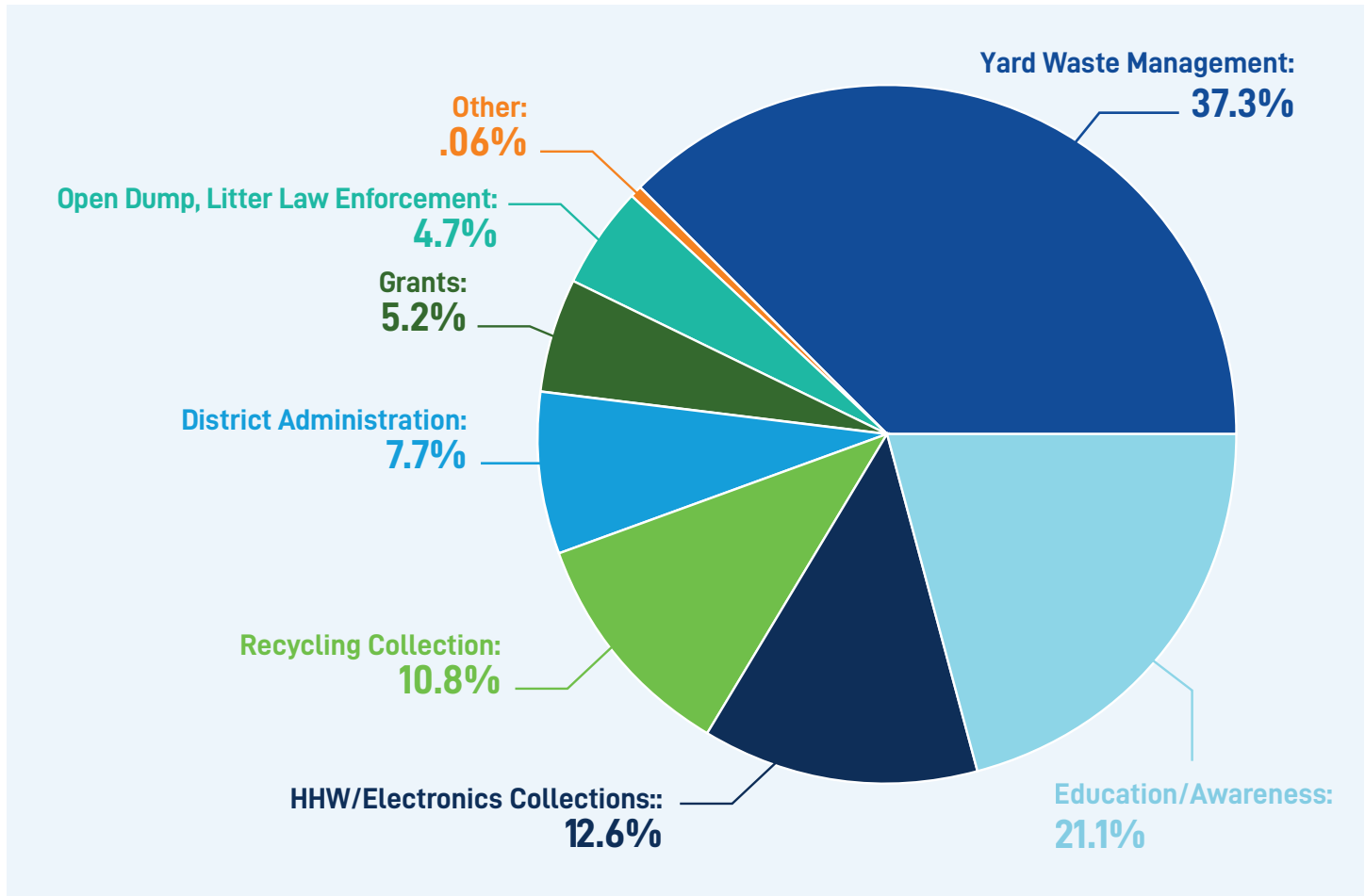
We will add to our staff so that we can provide additional support to business, schools and expand our grant programs.



Our Budget Strategy: Financially Responsible Management with *No Increase in Fees*

The plan includes **NO INCREASE** to the \$5/ton generation fee that is the primary means of funding the plan.

Generation fee revenue: \$6.2 million/year. Where it goes:



Funding New Projects: In 2017, SWACO removed a \$7 tipping fee that was used to pay off the debt we inherited from the former waste-to-energy plant. At that time, we reallocated \$1 of that fee to support waste diversion programs such as buying recycling carts for communities. This plan formalizes the ongoing allocation of that \$1 per ton for that purpose. We're considering \$18 million in potential capital spending for initiatives such as recycling and organics carts, a compost facility, a new education center and the Convenience Center for dropping off hazardous household waste.

HOW YOU CAN HELP

SWACO is proud to be a leader in waste diversion. Your vote to approve this plan update will position us to continue that leadership and make it easier for our schools, businesses, residents, and communities to divert more materials from the landfill.

For more information about the Plan, contact: Andrew.Booker@swaco.org

