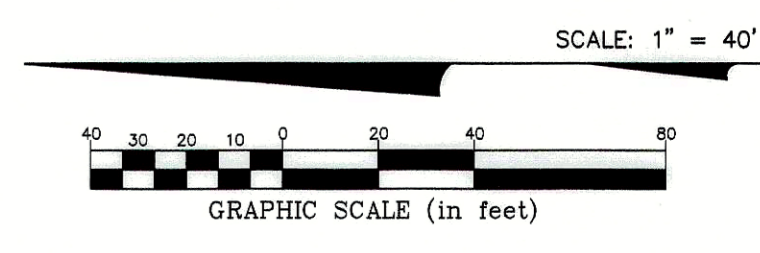


UPPER ALBANY WEST SECTION 10 PART 1



① = 10' No Vehicular Access
See Note "I"

HARLEM ROAD REAL ESTATE, LLC
I.N. 201301150007881 See Note "H"

RESUBDIVISION OF A PART
OF JO-EL ACRES
P.B. 120, P. 32
LOT 1

RESUBDIVISION OF A PART
OF JO-EL ACRES
P.B. 120, P. 32
LOT 2

CARL L. AND ILA MILDRED SOUDER,
TRUSTEES
O.R. 32269B03

WALNUT STREET

CARLATUN STREET

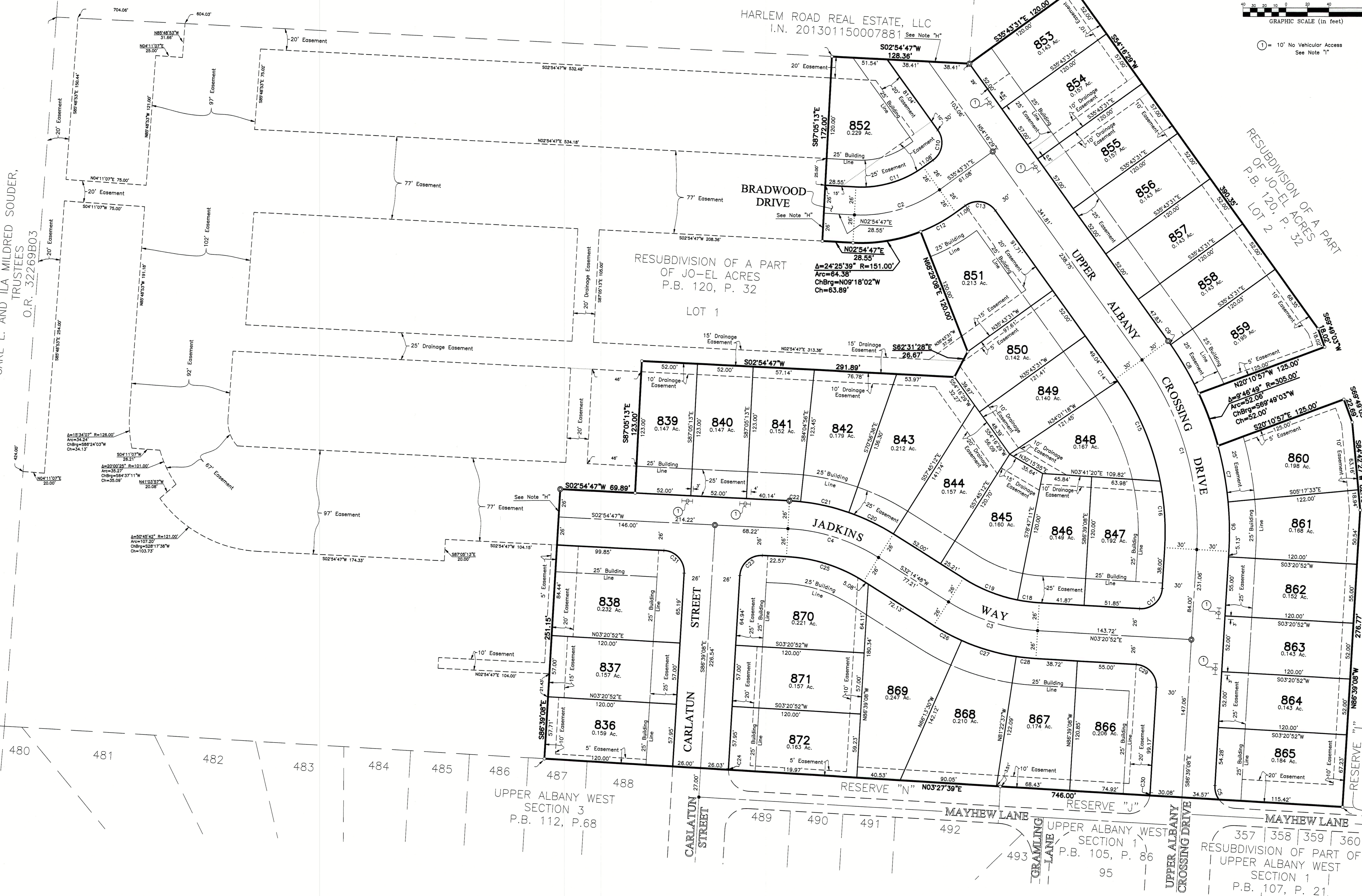
JADKINS WAY

MAYHEW LANE

UPPER ALBANY CROSSING DRIVE

CENTRAL COLLEGE ROAD

J:\20151663\DWG\04SHRETS\PLAT_20151663\5-FLAT-SEC10-FRT.LDW plotted by PROCHARD, LMI on 7/25/2016 3:16:19 PM last saved by JAMSTON on 5/27/2016 1:38:45 PM



UPPER ALBANY WEST
SECTION 3
P.B. 112, P.68

UPPER ALBANY WEST
SECTION 1
P.B. 105, P. 86

RESUBDIVISION OF PART OF
UPPER ALBANY WEST
SECTION 1
P.B. 107, P. 21