

MAP ANNEXATION AN06-010 17.70 Acres in Plain Township Quest Community Church

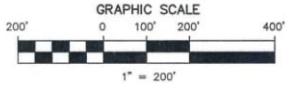
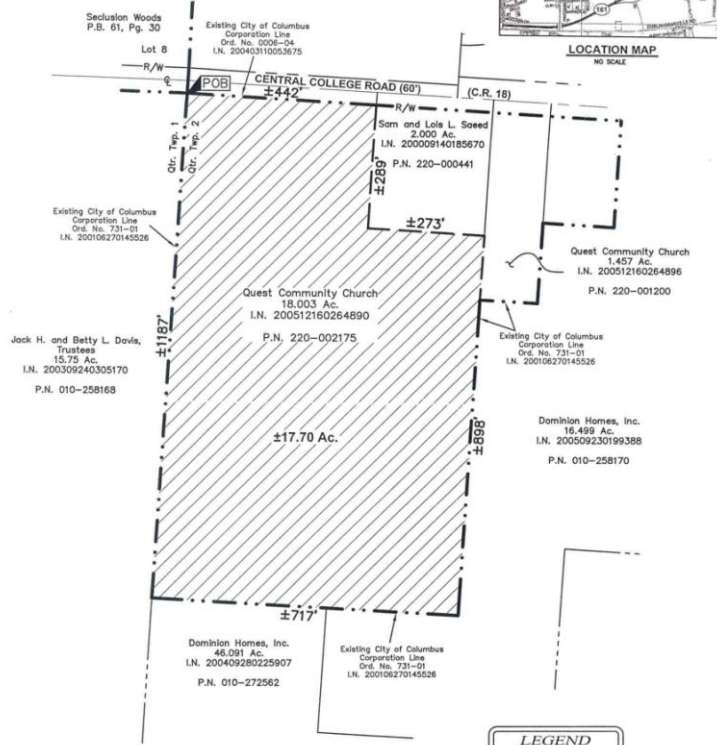
**17.70 ACRE ANNEXATION TO THE CITY OF COLUMBUS
EXPEDITED II ANNEXATION UNDER ORC §709.021 AND §709.023**
LOCATED IN SECTION 15, TOWNSHIP 2, RANGE 16
UNITED STATES MILITARY LANDS
PLAIN TOWNSHIP, FRANKLIN COUNTY, OHIO

Length of Contiguity - 3,092 feet
Total Length of Perimeter - 3,806 feet
Percentage of Contiguity - 81%
No islands of township property are created
by this annexation

RECEIVED

MAY 16 2006

Franklin County Engineer
Dean C. Ringle, P.E., P.S.



LEGEND	
	Area to be Annexed
	Existing City of Columbus Corp. Line
	Proposed City of Columbus Corp. Line

DRAWN BY: *CEW* JOB NO.: 06-0011-112
DATE: 5/16/06 CHECKED BY: *DRH*

**ADVANCED
CIVIL DESIGN**
ENGINEERS SURVEYORS

422 Beecher Road
Gahanna, Ohio 43230
ph 614.428.7750
fax 614.428.7755

Clark E. White
Clark E. White
Professional Surveyor No. 7868

ANNEXATION
PLAT & DESCRIPTION
ACCEPTABLE
DEAN C. RINGLE, P.E., P.S.
FRANKLIN COUNTY ENGINEER

By *GB/fmc* Date *6/2/06*

Z:\06-0011-112\0601112.dwg (011-112)Area-reduced.dwg Layout1 May 16, 2006 8:36:30am ceh/ie