

Z:\22-0019-716\DWG\PRODUCTION DRAWINGS\SURVEY\22-0019-716 Capital st.rw encroachment easement (REV 2-19-24).img Page 1 Feb 19, 2024 3:20:20pm bkrshner

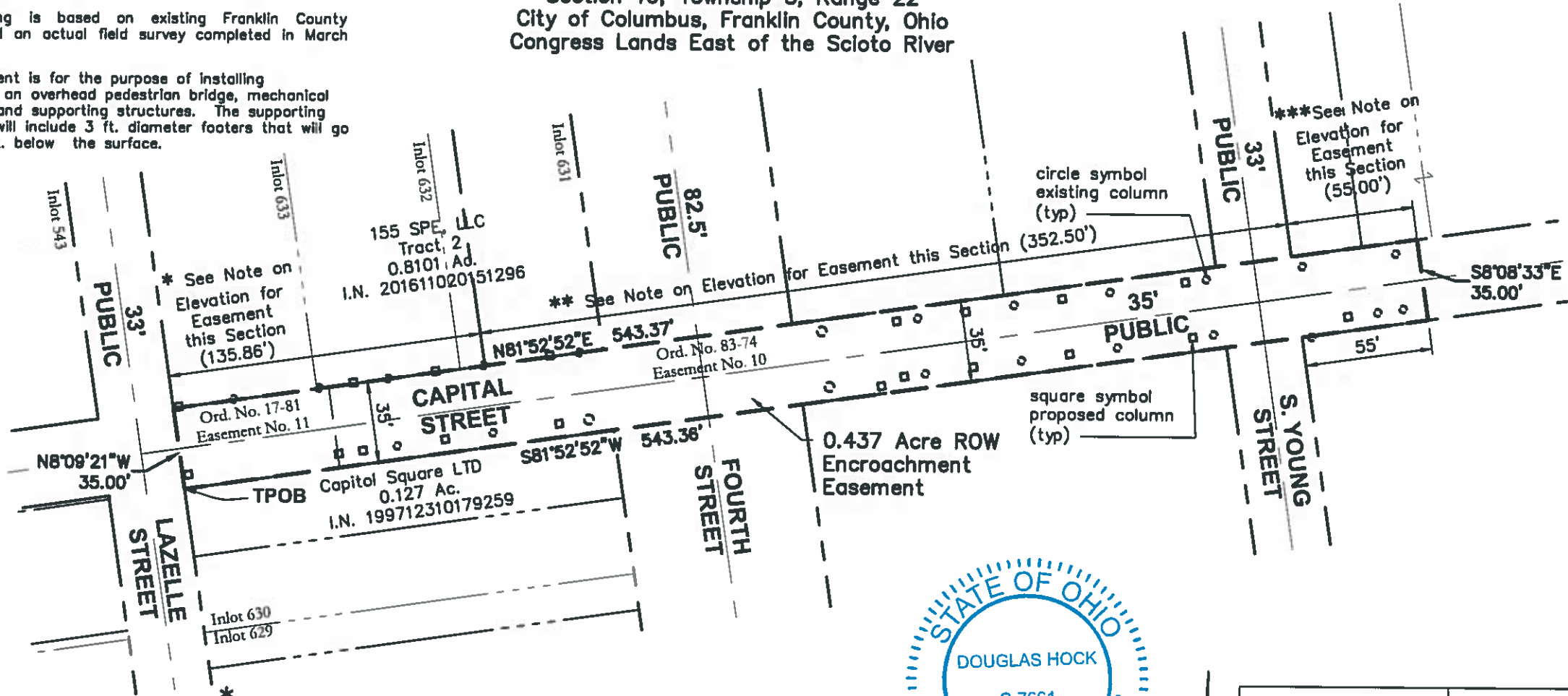
The bearings shown herein are based on the Ohio State Plane Coordinate System, South Zone, NAD83 (NSRS 2011 adjustment) with the easterly right-of-way line of N. High Street to be N08°09'37"W.

This drawing is based on existing Franklin County records and an actual field survey completed in March 2020.

This easement is for the purpose of installing maintaining an overhead pedestrian bridge, mechanical equipment and supporting structures. The supporting structures will include 3 ft. diameter footers that will go up to 35 ft. below the surface.

# 0.437 Acre ROW Encroachment Easement Exhibit Capital Street

Section 16, Township 5, Range 22  
City of Columbus, Franklin County, Ohio  
Congress Lands East of the Scioto River



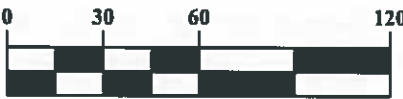
\* See Note on Elevation for Easement this Section (135.86')

\*\* See Note on Elevation for Easement this Section (352.50')

\*\*\* See Note on Elevation for Easement this Section (55.00')

- \* Easement extends upward from elevation 773.0 to Elevation 788.0 for this portion of the easement. (NAVD 88)
- \*\* Easement extends upward from elevation 775.0 to Elevation 790.0 for this portion of the easement. (NAVD 88)
- \*\*\* Easement extends upward from elevation 772.0 to Elevation 787.0 for this portion of the easement. (NAVD 88)

### GRAPHIC SCALE



1 inch = 60 feet



*Douglas R. Hock*  
 Douglas R. Hock, P.S. 7661  
 Date: 2/21/24

DRAWN BY: DRH	JOB NO.: 22-0019-716
DATE: 2/19/24	CHECKED BY: DRB

**ADVANCED**  
 CIVIL DESIGN  
 ENGINEERS SURVEYORS

781 Science Boulevard, Suite 100  
 Gahanna, Ohio 43230  
 ph 614.428.7750  
 fax 614.428.7755