

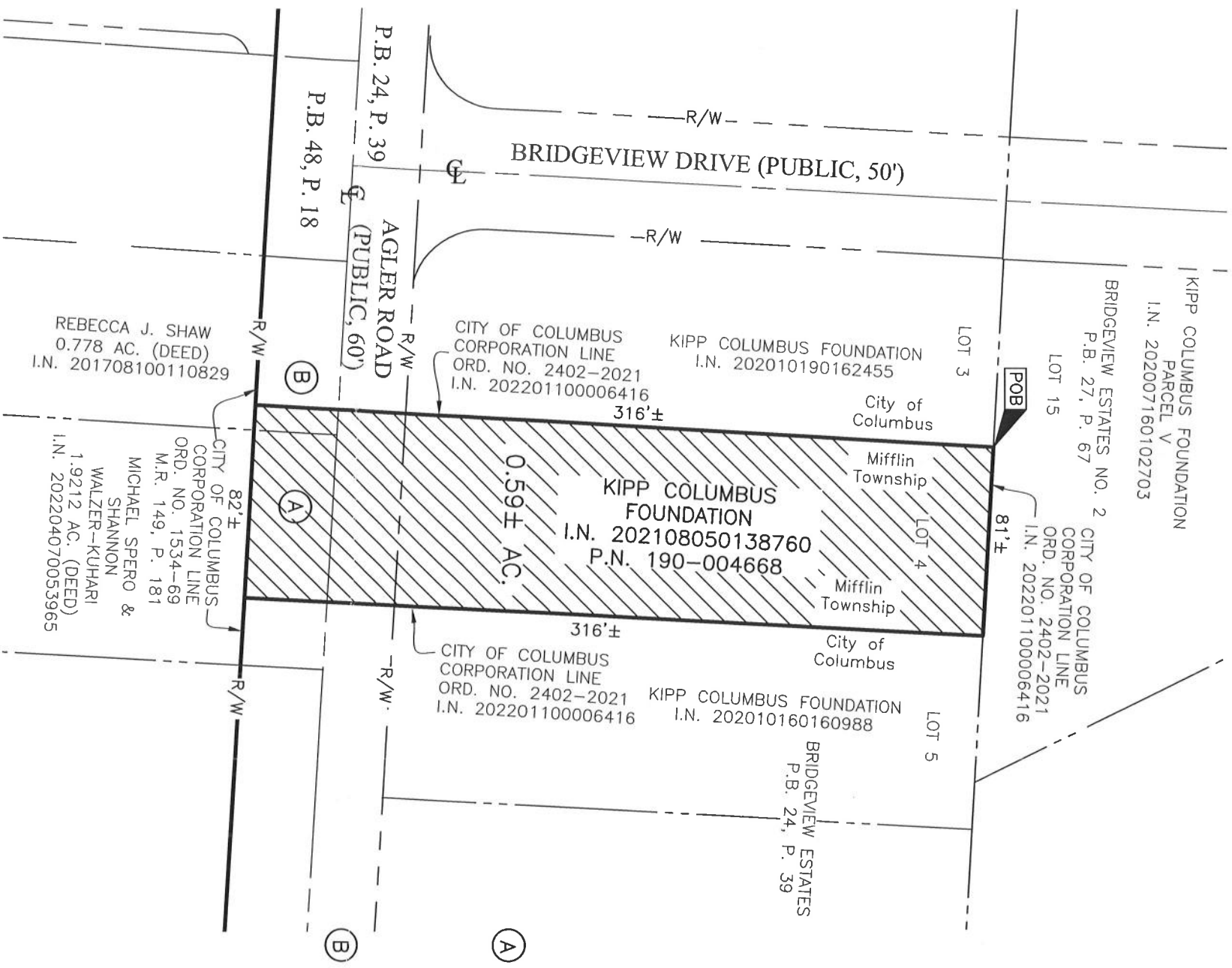
**PROPOSED ANNEXATION OF 0.59 ± ACRE FROM
 MIFFLIN TOWNSHIP TO THE CITY OF COLUMBUS**
 QUARTER TOWNSHIP 2, TOWNSHIP 1, RANGE 17
 UNITED STATES MILITARY DISTRICT
 TOWNSHIP OF MIFFLIN, COUNTY OF FRANKLIN, STATE OF OHIO

Date: June 17, 2022

Scale: 1" = 60'

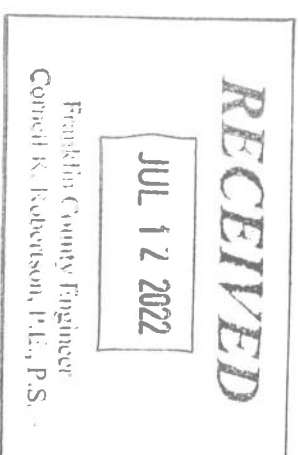
Job No: 2020-1263

Sheet No: 1 of 1



FRANKLIN COUNTY
 COMMISSIONERS
 PARCEL 97WD
 0.0788 AC. (DEED)
 O.R. 30452H02

FRANKLIN COUNTY
 COMMISSIONERS
 PARCEL 96WD
 0.0642 AC. (DEED)
 O.R. 30737F14



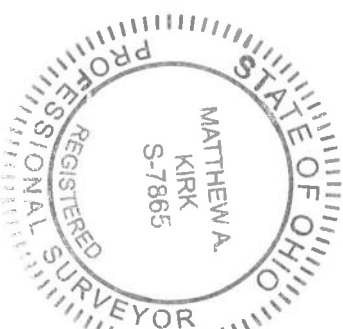
ANNEXATION
 PLAT & DESCRIPTION
 ACCEPTABLE
 CORNELL R. ROBERTSON, P.E., P.S.
 FRANKLIN COUNTY ENGINEER

By *CR* Date 07/12/2022

PROPOSED CITY OF COLUMBUS CORPORATION LINE
 EXISTING CITY OF COLUMBUS CORPORATION LINE

Contiguity Note:
 Total perimeter of annexation area is 795 feet, all of which is contiguous with the City of Columbus by Ordinance Number 2402-2021 and Ordinance Number 1534-69, giving 100% perimeter contiguity.

Note:
 This annexation does not create islands of unincorporated areas within the limits of the area to be annexed.



By *Matthew A. Kirk* Date 17 June 22
 Matthew A. Kirk
 Professional Surveyor No. 7865
 mkirk@emht.com

