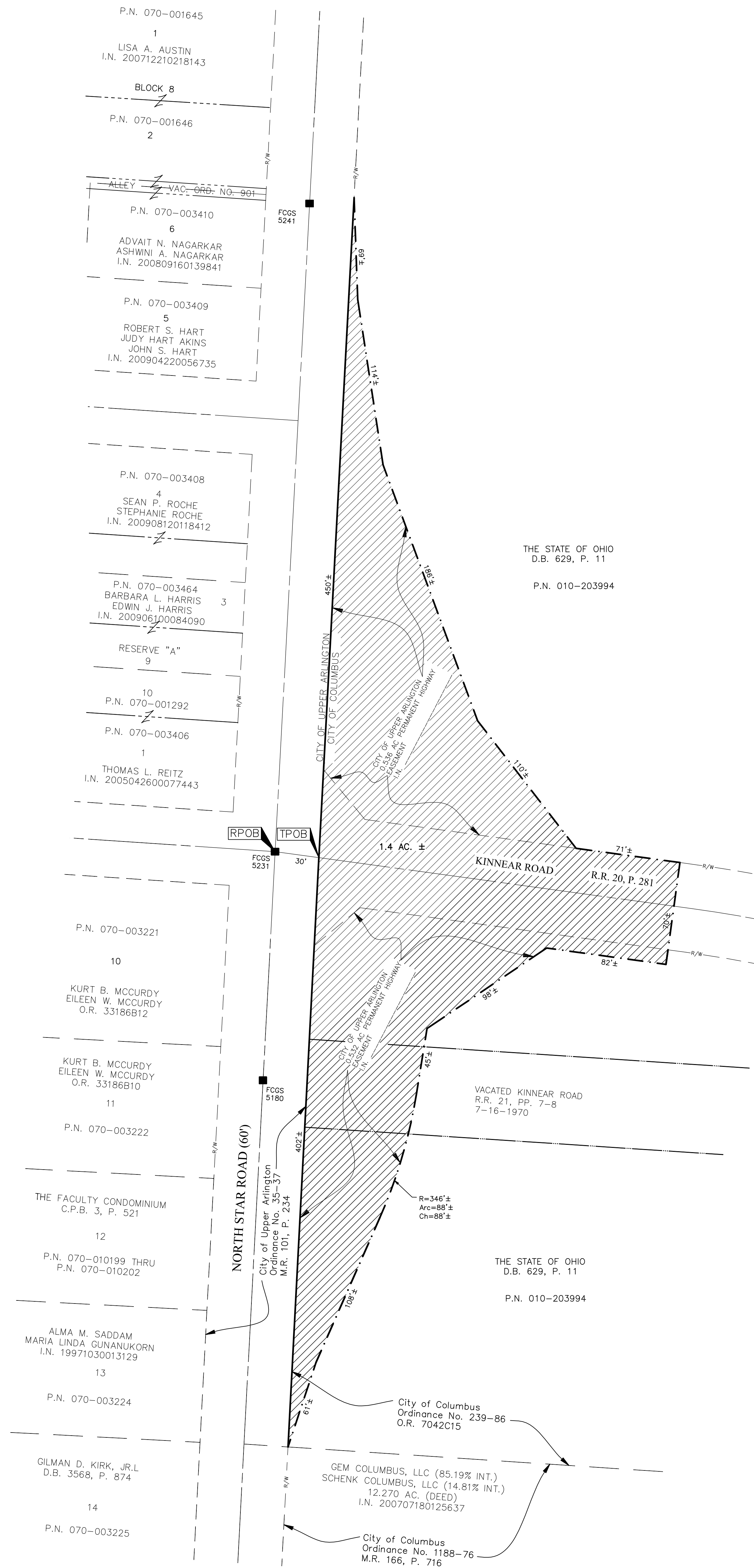


# BOUNDARY ADJUSTMENT OF 1.4 ACRES ± FROM THE CITY OF COLUMBUS TO THE CITY OF UPPER ARLINGTON

QUARTER TOWNSHIP 3, TOWNSHIP 1, RANGE 18  
UNITED STATES MILITARY LANDS  
CITY OF COLUMBUS, COUNTY OF FRANKLIN, STATE OF OHIO



LOCATION MAP AND BACKGROUND DRAWING  
SCALE: 1" = 3000'



### LEGEND

- AREA TO BE ANNEXED
- PROPOSED CITY OF UPPER ARLINGTON CORPORATION LINE
- EXISTING CITY OF COLUMBUS AND EXISTING CITY OF UPPER ARLINGTON CORPORATION LINE

**Contiguity Note:**  
Total perimeter of boundary adjustment area is 1954 feet, of which 852 feet is contiguous with the City of Upper Arlington by Ordinance Number 35-37, giving 44% perimeter contiguity.

By: Heather L. King Date: \_\_\_\_\_  
Professional Surveyor No. 8307

<b>EMHT</b> <small>Evans, Mechwart, Hambleton &amp; Tilton, Inc. Engineers • Surveyors • Planners • Scientists 5500 New Albany Road, Columbus, OH 43254 Phone: 614.775.4500 Fax: 614.775.3648 emht.com</small>	Date: May 08, 2013
	Scale: 1" = 40'
Job No: 2009-1186	Sheet: 1 of 1

REVISIONS		
MARK	DATE	DESCRIPTION
HLK	5/10/13	Revised contiguity note
HLK	7/1/13	Revisions per County/City comments.

