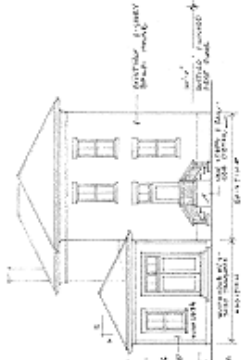


W. 2nd St. A.V.D. (100')

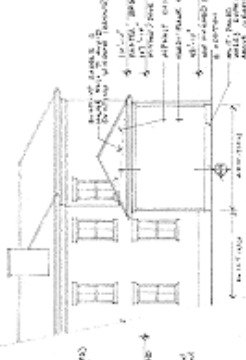
Set by Street
attorney
 10-27-09

Site Plan
 Scale: 1/8" = 1'-0"

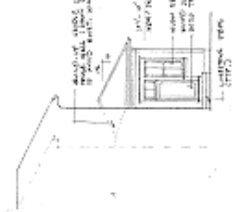
Drawing Index:
 A-1 Carriage House Plans
 A-2 Addition Plans
 A-3 Foundation Plans
 A-4 Structural Details



North Elevation



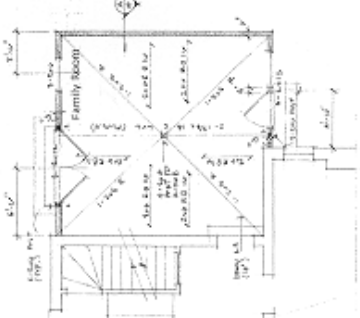
East Elevation



South Elevation

Elevation Notes
 Scale: 1/8" = 1'-0"

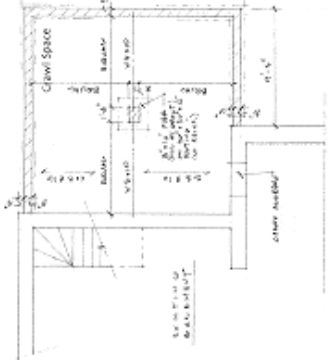
- All wood finish to be 1/2" plywood sheathing or finished, primed or oil stained.
- Concrete to be 3000 psi, 4" thick and finished in accordance with the specifications for concrete.
- Finish exterior walls to be 1/2" brick with mortar joints finished in accordance with the specifications for brick.
- Finish exterior walls to be 1/2" brick with mortar joints finished in accordance with the specifications for brick.
- Finish exterior walls to be 1/2" brick with mortar joints finished in accordance with the specifications for brick.
- Finish exterior walls to be 1/2" brick with mortar joints finished in accordance with the specifications for brick.
- Finish exterior walls to be 1/2" brick with mortar joints finished in accordance with the specifications for brick.
- Finish exterior walls to be 1/2" brick with mortar joints finished in accordance with the specifications for brick.
- Finish exterior walls to be 1/2" brick with mortar joints finished in accordance with the specifications for brick.
- Finish exterior walls to be 1/2" brick with mortar joints finished in accordance with the specifications for brick.



Addition First Floor Plan
 Scale: 1/8" = 1'-0"

Floor Plan Notes

- Finish exterior walls to be 1/2" brick with mortar joints finished in accordance with the specifications for brick.
- Finish exterior walls to be 1/2" brick with mortar joints finished in accordance with the specifications for brick.
- Finish exterior walls to be 1/2" brick with mortar joints finished in accordance with the specifications for brick.
- Finish exterior walls to be 1/2" brick with mortar joints finished in accordance with the specifications for brick.
- Finish exterior walls to be 1/2" brick with mortar joints finished in accordance with the specifications for brick.
- Finish exterior walls to be 1/2" brick with mortar joints finished in accordance with the specifications for brick.
- Finish exterior walls to be 1/2" brick with mortar joints finished in accordance with the specifications for brick.
- Finish exterior walls to be 1/2" brick with mortar joints finished in accordance with the specifications for brick.
- Finish exterior walls to be 1/2" brick with mortar joints finished in accordance with the specifications for brick.
- Finish exterior walls to be 1/2" brick with mortar joints finished in accordance with the specifications for brick.



Addition Foundation Plan
 Scale: 1/8" = 1'-0"