

**BASIS OF BEARING**  
 BASIS OF BEARINGS ARE BASED ON THE SAME MERIDIANS AS THE OHIO STATE PLANE COORDINATE SYSTEM, SOUTH ZONE, MANS. 86 ADJUSTED MONUMENTS USED ALONG THE CENTERLINE OF SHOOK ROAD. FOGS 9930 AND FOGS 9927 CENTERLINE BEARINGS = N 33°38' E 2866.15'

**LINE SCHEDULE**

L1	N 86°04'18" W	30.00'
L2	N 05°09'44" W	5.37'
L3	N 80°18'27" W	39.60'
L4	N 86°01'02" W	27.21'
L5	S 86°01'02" E	18.15'
L6	N 84°53'32" E	44.12'
L7	S 86°01'02" E	8.73'

**CURVE SCHEDULE**

C1	Ac = 62.95'	Δ = 75°14'59"	R = 280.00'
	Δ = 75°08'44"	R = 288.00'	Ch = S 72°20'03" W
	R = 48.00'	Ch = S 72°20'03" W	215.29'
	Ac = 4.50'	Δ = 5.20'	R = 114.23'
	Δ = 0°39'54"	R = 288.00'	Ch = N 72°28'43" W
	R = 388.00'	Ch = N 72°28'43" W	5.20'
	Ch = N 42°44'06" W	58.54'	
	Ac = 286.62'	Δ = 69°39'18"	R = 48.00'
	Δ = 43°53'50"	R = 48.00'	Ch = N 72°02'03" E
	R = 348.00'	Ch = N 72°02'03" E	280.15'
	Ac = 126.13'	Δ = 148°53'37"	R = 418.00'
	Δ = 148°53'37"	R = 418.00'	Ch = S 72°28'43" W
	R = 126.31'	Ch = S 72°28'43" W	4.85'

**EASEMENT LINE SCHEDULE**

E1	N 86°04'18" W	20.25'
E2	N 80°18'27" W	38.60'
E3	N 86°01'02" W	26.21'
E4	N 33°38' E	21.42'
E5	S 86°01'02" E	11.62'
E6	S 35°42' E	15.23'
E7	S 49°36'25" W	39.14'
E8	S 84°53'32" W	17.31'
E9	N 49°36'25" E	58.78'
E10	S 86°01'02" W	16.72'
E11	N 86°01'02" W	10.05'
E12	N 86°01'02" W	15.00'
E13	S 50°9'44" E	5.37'
E14	S 50°9'44" E	2.17'
E15	N 17°51'14" W	15.00'
E16	S 86°01'02" E	16.95'
E17	N 84°53'32" E	42.93'
E18	S 86°01'02" E	16.72'

**EASEMENT CURVE SCHEDULE**

E1	Ac = 36.71'	Δ = 75°14'59"	R = 280.00'
	Δ = 75°14'59"	R = 288.00'	Ch = S 72°20'03" W
	R = 28.00'	Ch = S 72°20'03" W	34.15'
	Ac = 145.96'	Δ = 22°43'33"	R = 115.78'
	Δ = 22°43'33"	R = 115.78'	Ch = S 81°26'54" W
	R = 368.13'	Ch = S 81°26'54" W	11.578'
	Ac = 11.61'	Δ = 135°11'55"	R = 48.00'
	Δ = 135°11'55"	R = 48.00'	Ch = N 78°9'45" E
	R = 11.578'	Ch = N 78°9'45" E	11.578'
	Ac = 31.06'	Δ = 52°55'45"	R = 33.00'
	Δ = 52°55'45"	R = 33.00'	Ch = N 62° 41' 01" E
	R = 48.00'	Ch = N 62° 41' 01" E	35.18'
	Ac = 278.11'	Δ = 109°28'	R = 223.00'
	Δ = 109°28'	R = 223.00'	Ch = S 72° 02' 03" W
	R = 363.00'	Ch = S 72° 02' 03" W	107.57'
	Ac = 5.37'	Δ = 0°39'54"	R = 483.00'
	Δ = 0°39'54"	R = 483.00'	Ch = S 72° 28' 43" W
	R = 5.37'	Ch = S 72° 28' 43" W	5.37'

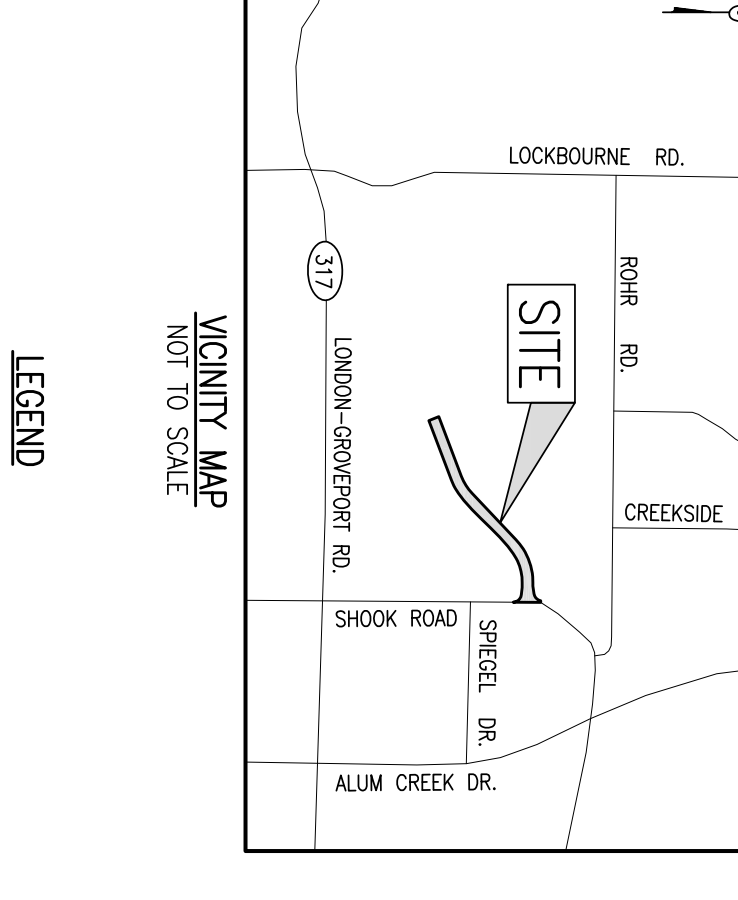
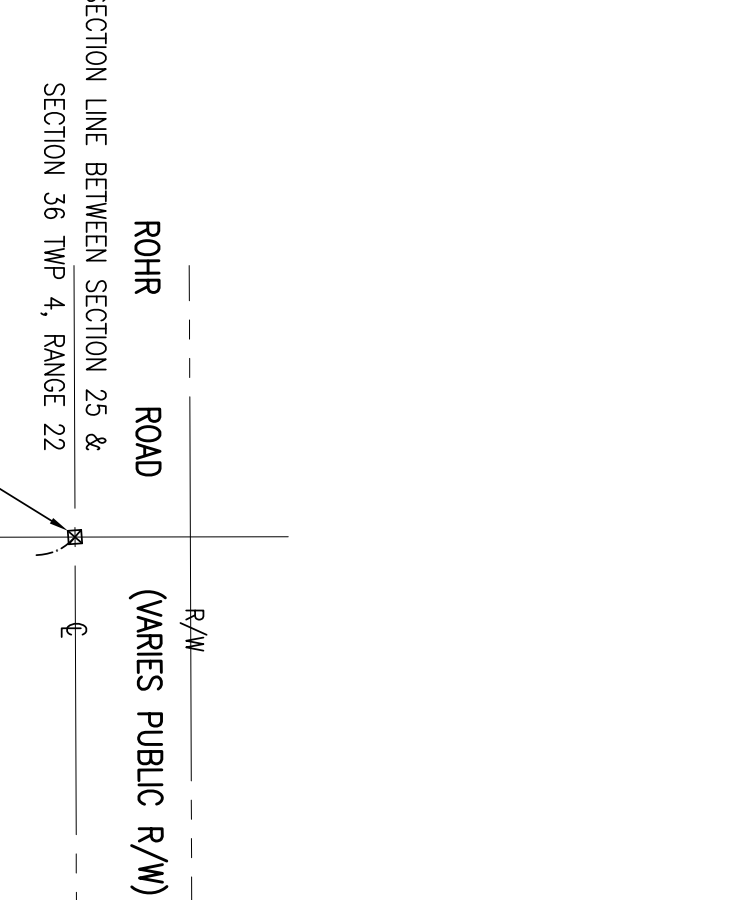
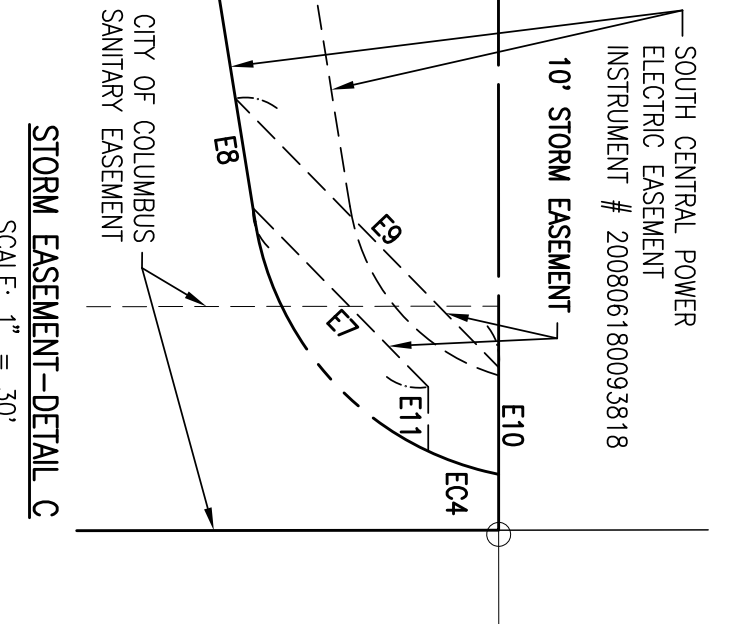
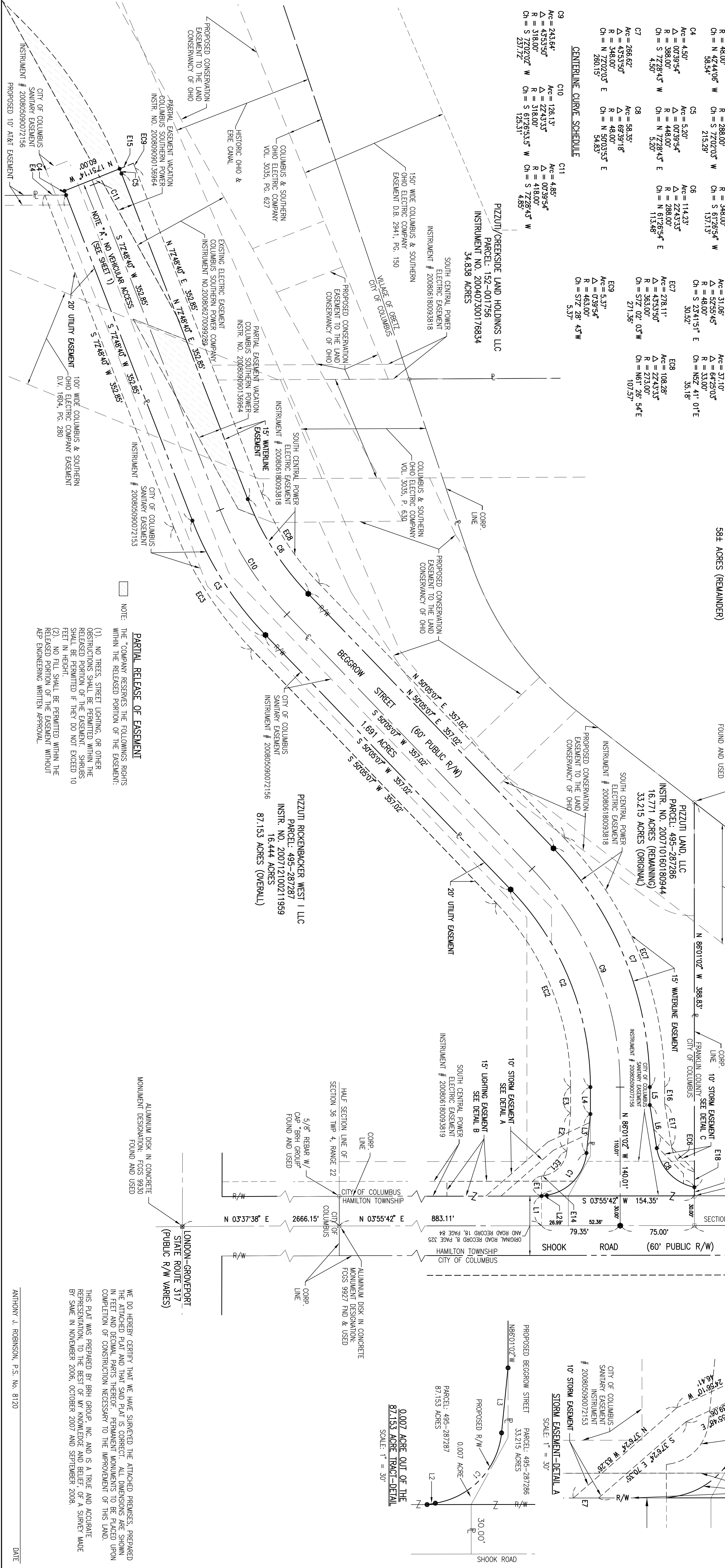
**CENTERLINE CURVE SCHEDULE**

C9	Ac = 243.64'	Δ = 43°53'50"	R = 318.00'
	Δ = 43°53'50"	R = 318.00'	Ch = S 72°20'03" W
	R = 318.00'	Ch = S 72°20'03" W	237.72'
	Ac = 126.13'	Δ = 148°53'37"	R = 418.00'
	Δ = 148°53'37"	R = 418.00'	Ch = S 72°28'43" W
	R = 126.31'	Ch = S 72°28'43" W	4.85'
	Ac = 126.13'	Δ = 148°53'37"	R = 418.00'
	Δ = 148°53'37"	R = 418.00'	Ch = S 72°28'43" W
	R = 126.31'	Ch = S 72°28'43" W	4.85'
	Ac = 4.85'	Δ = 0°39'54"	R = 483.00'
	Δ = 0°39'54"	R = 483.00'	Ch = S 72°28'43" W
	R = 4.85'	Ch = S 72°28'43" W	4.85'

**EASEMENT LINE SCHEDULE**

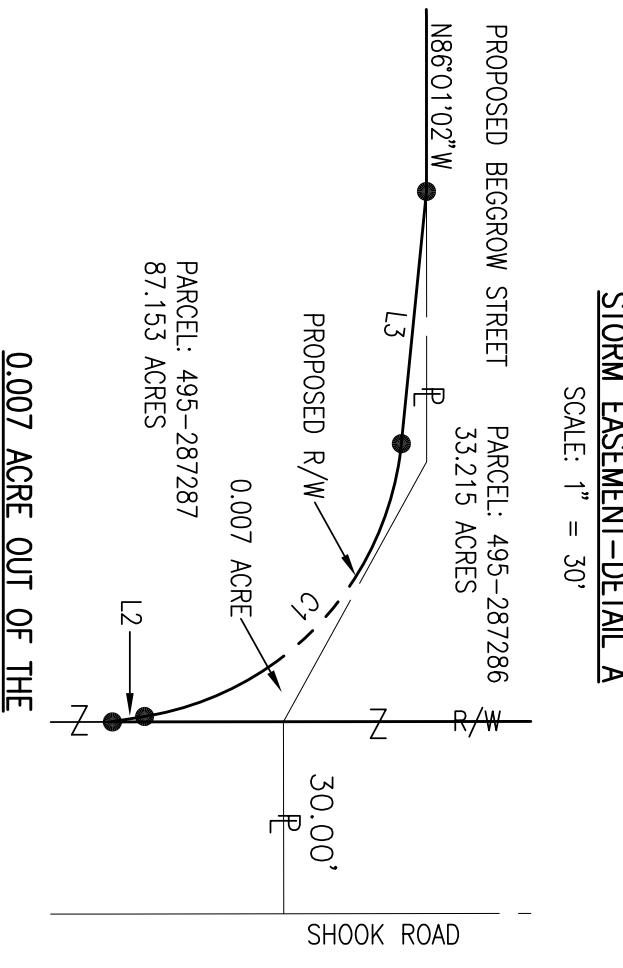
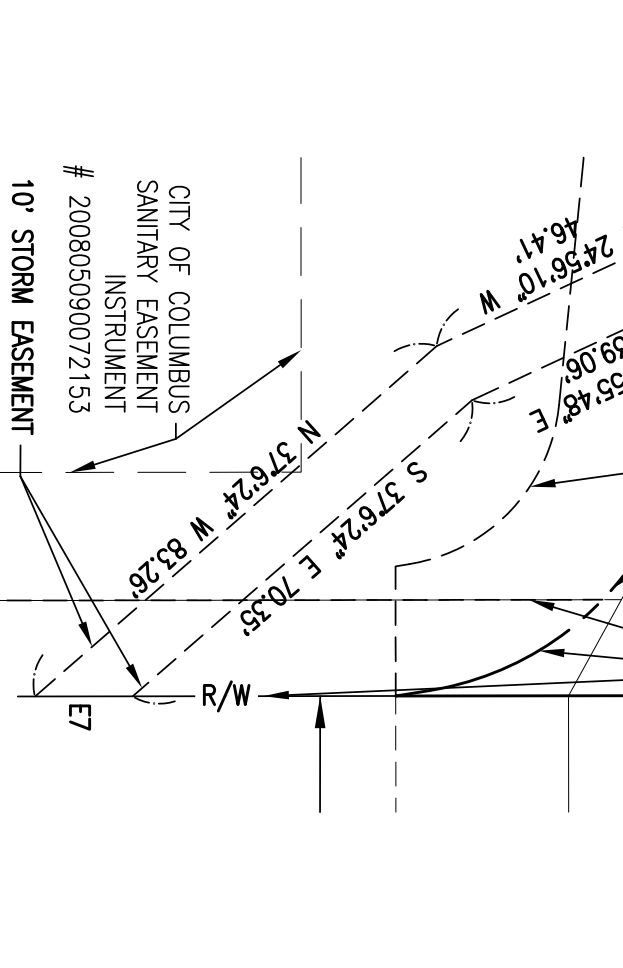
E1	N 86°04'18" W	20.25'
E2	N 80°18'27" W	38.60'
E3	N 86°01'02" W	26.21'
E4	N 33°38' E	21.42'
E5	S 86°01'02" E	11.62'
E6	S 35°42' E	15.23'
E7	S 49°36'25" W	39.14'
E8	S 84°53'32" W	17.31'
E9	N 49°36'25" E	58.78'
E10	S 86°01'02" W	16.72'
E11	N 86°01'02" W	10.05'
E12	N 86°01'02" W	15.00'
E13	S 50°9'44" E	5.37'
E14	S 50°9'44" E	2.17'
E15	N 17°51'14" W	15.00'
E16	S 86°01'02" E	16.95'
E17	N 84°53'32" E	42.93'
E18	S 86°01'02" E	16.72'

JAMES E. DILL, JAC T. DILL, AND PHILEMON J. DILL, JR.  
 IN INSTRUMENT NUMBERS 199702210004226 AND 199709280103004;  
 AND ALSO DEEDED TO JAMES E. DILL AS TRUSTEE OF THE  
 JAMES E. DILL TRUST CREATED UNDER DECLARATION OF TRUST  
 DATED FEBRUARY 17, 2002 (1/3 UNDIVIDED INTEREST) IN  
 INSTRUMENT NUMBER 200202210046773,  
 AND ALSO DEEDED TO JAC T. DILL AS TRUSTEE OF THE JAC T. DILL TRUST  
 CREATED UNDER DECLARATION OF TRUST DATED JULY 13, 2006  
 (1/3 UNDIVIDED INTEREST) IN INSTRUMENT NUMBER 200607200141999  
 PID- 152-001755  
 584 ACRES (REMAINDER)



**LEGEND**

- FOUND, AS LABELLED
- NOT FOUND
- ▲ "TRH GROUP" MARKED
- ▲ REBAR SET
- ▲ RAILROAD SPIKE SET
- ▲ MAG NAIL SET
- MAGNAIL FOUND
- MONUMENT FOUND
- FOUND, AS LABELLED
- ▲ "TRH GROUP" MARKED
- ▲ REBAR SET
- ▲ RAILROAD SPIKE SET
- ▲ MAG NAIL SET
- MAGNAIL FOUND
- MONUMENT FOUND



**PARTIAL RELEASE OF EASEMENT**  
 NOTE: THE COMPANY RESERVES THE FOLLOWING RIGHTS WITHIN THE RELEASED PORTION OF THE EASEMENT:  
 (1) NO TREES, STREET LIGHTING, OR OTHER OBSTRUCTIONS SHALL BE PERMITTED WITHIN THE RELEASED PORTION OF THE EASEMENT. SHRUBS SHALL BE PERMITTED IF THEY DO NOT EXCEED 10 FEET IN HEIGHT.  
 (2) NO FILL SHALL BE PERMITTED WITHIN THE RELEASED PORTION OF THE EASEMENT WITHOUT THE AP ENGINEERING WRITTEN APPROVAL.

WE DO HEREBY CERTIFY THAT WE HAVE SURVEYED THE ATTACHED PREMISES, PREPARED THE ATTACHED PLAN AND THAT SAID PLAN IS CORRECT. ALL DIMENSIONS ARE SHOWN IN FEET AND DECIMAL PARTS THEREOF. PERMANENT MONUMENTS TO BE PLACED UPON COMPLETION OF CONSTRUCTION NECESSARY TO THE IMPROVEMENT OF THIS LAND.  
 THIS PLAN WAS PREPARED BY BRH GROUP, INC. AND IS A TRUE AND ACCURATE REPRESENTATION, TO THE BEST OF MY KNOWLEDGE AND BELIEF, OF A SURVEY MADE BY SAME IN NOVEMBER 2006, OCTOBER 2007 AND SEPTEMBER 2008.  
 ANTHONY J. ROBINSON, P.S. No. 8120 DATE

**BEGGROW STREET DEDICATION PHASE I COLUMBUS, OHIO**

No.	REVISIONS	DATE

**BRH Group, Inc.**  
 Engineering & Surveying

705-F Lakewood Plaza-Bowling  
 Worthington, Ohio 43085-4779  
 Phone: (614) 941-0770  
 Email: info@brhgrp.com

JOB NO. 40032.37  
 DRAWN BY JS  
 DESIGNED BY JS  
 CHECKED BY AJR  
 FIELD CREW ROG/CMB  
 DATE 9-17-08  
 SCALE 1" = 1'

SHEET 2 OF 2