

**TEMPORARY EASEMENT T-4**  
**0.595 ACRES**

Situated in the State of Ohio, County of Franklin, City of Columbus and located in Quarter Township 2, Township 2, Range 17, United States Military Lands, also being a part of 3.709 acres tract as described in a deed to Lauffer Ravines, LLC in Instrument No. 200406180140650 on file in the Recorder's Office of Franklin County, Ohio and being particularly described as follows:

Beginning for reference at the southeast corner of a 5.890 acre tract as described in a deed to Snyder Smith Partnership I in Official Record 11800G16 on file in the Recorder's Office of Franklin County, Ohio, same being the southwest corner of said Grantor's tract, said point also lies in the northerly limited access right of way line of Interstate Highway 270;

Thence **N 25 degrees 58 minutes 01 seconds E** a distance of **110.86 feet** with the east line of said Snyder Smith Partnership tract and the west line of said Grantor's tract to the **TRUE POINT OF BEGINNING**;

Thence, continue **N 25 degrees 58 minutes 01 seconds E** with the east line of said Snyder Smith Partnership tract and the west line of said Grantor's tract a distance of **69.13 feet**;

Thence **S 67 degrees 45 minutes 48 seconds E** a distance of **80.02 feet** crossing the Grantor's tract to a point;

Thence **N 85 degrees 18 minutes 23 seconds E** a distance of **177.97 feet** to a point;

Thence **N 72 degrees 33 minutes 10 seconds E** a distance of **185.74 feet** to a point;

Thence **S 17 degrees 26 minutes 50 seconds E** a distance of **44.99 feet** to the northerly line of Reserve "A" in "Cooper Ridge" as shown of record Plat Book 53, Page 18 on file in the Recorder's Office of Franklin County, Ohio, same being the Grantor's southerly line;

Thence **S 72 degrees 52 minutes 31 seconds W** a distance of **250.54 feet** with the northerly line of said Reserve "A" and with the Grantor's southerly line to a point;

Thence **S 80 degrees 32 minutes 16 seconds W** a distance of **108.27 feet** with the northerly line of said Reserve "A" and with the Grantor's southerly line to a point;

Thence **S 37 degrees 15 minutes 39 seconds W** a distance of **18.41 feet** with the northerly line of said Reserve "A" and with the Grantor's southerly line to a point;

Thence **N 67 degrees 45 minutes 48 seconds W** a distance of **124.25 feet** crossing the Grantor's tract to the **TRUE POINT OF BEGINNING**, containing 0.595 acre of land, more or less.

The above described area contains a total of **0.595 acres** within Franklin County Auditor's Parcel Number 600-223936, which includes 0.000 acres in the present road occupied.

Grantor claims title by Instrument recorded in Instrument No. 200406180140650, in the records of Franklin County, Ohio.

Bearings used in this description are based on Ohio State Plane Coordinates, South Zone, NAD 83.

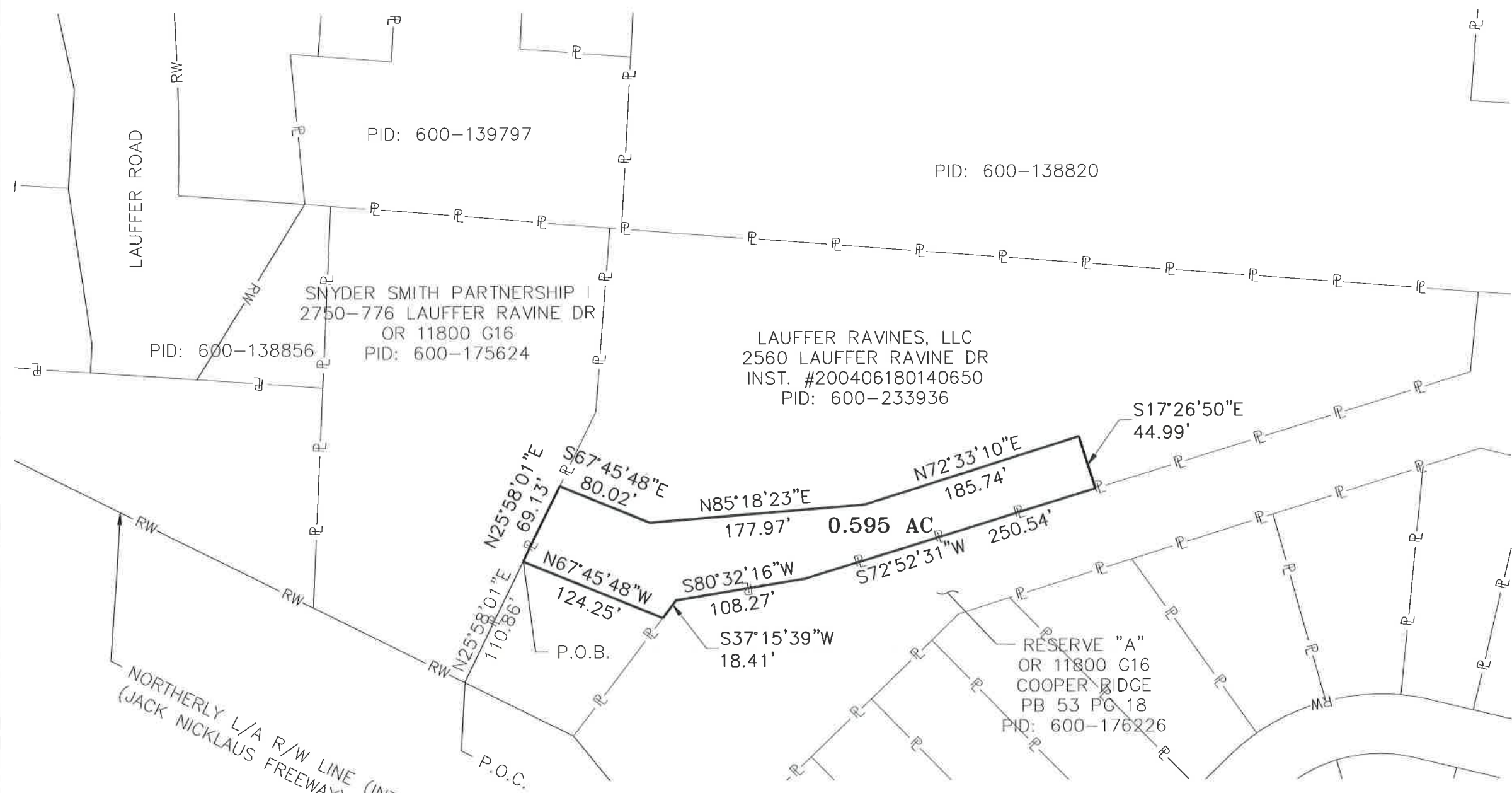
This description was prepared from existing records and does not represent a field survey.

Resource International, Inc.

Mark S. Ward 9-13-13  
Mark S. Ward, P.S.  
Professional Surveyor No. S-7514



**PLAT OF 0.595 ACRES  
LOCATED IN  
QTR TWP2, TWP-2, R-17, USML  
CITY OF COLUMBUS  
FRANKLIN COUNTY, OHIO**




NORTHERLY L/A R/W LINE (INTERSTATE 270)  
(JACK NICKLAUS FREEWAY) DB 2717 PG 202

NOTE:  
THIS PLAT PREPARED FROM RECORD DOCUMENTS.



PLATTED BY:  
RESOURCE INTERNATIONAL, INC.  
*Mark S. Ward* 9-13-13  
MARK S. WARD P.S. No., S-7514 DATE

DESCRIPTION				
<b>TEMPORARY EASEMENT T-4</b>				
LOCATION				
<b>2750-776 LAUFFER RAVINE DR COLUMBUS, OH</b>				
CLIENT				
<b>CHESTER ENGINEERS 88 E BROAD STREET</b>				
 <b>RESOURCE INTERNATIONAL, INC. 6350 PRESIDENTIAL GATEWAY COLUMBUS, OHIO 43231</b>				
DRAWN BY:	CHECKED BY:	CREW CHIEF:	PROJECT No.	SHEET
<b>EJG</b>	<b>MSW</b>		<b>W09-124</b>	<b>1 OF 1</b>
SCALE:	DATE:			
<b>1" = 100'</b>	<b>7-23-13</b>			