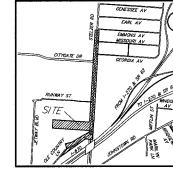
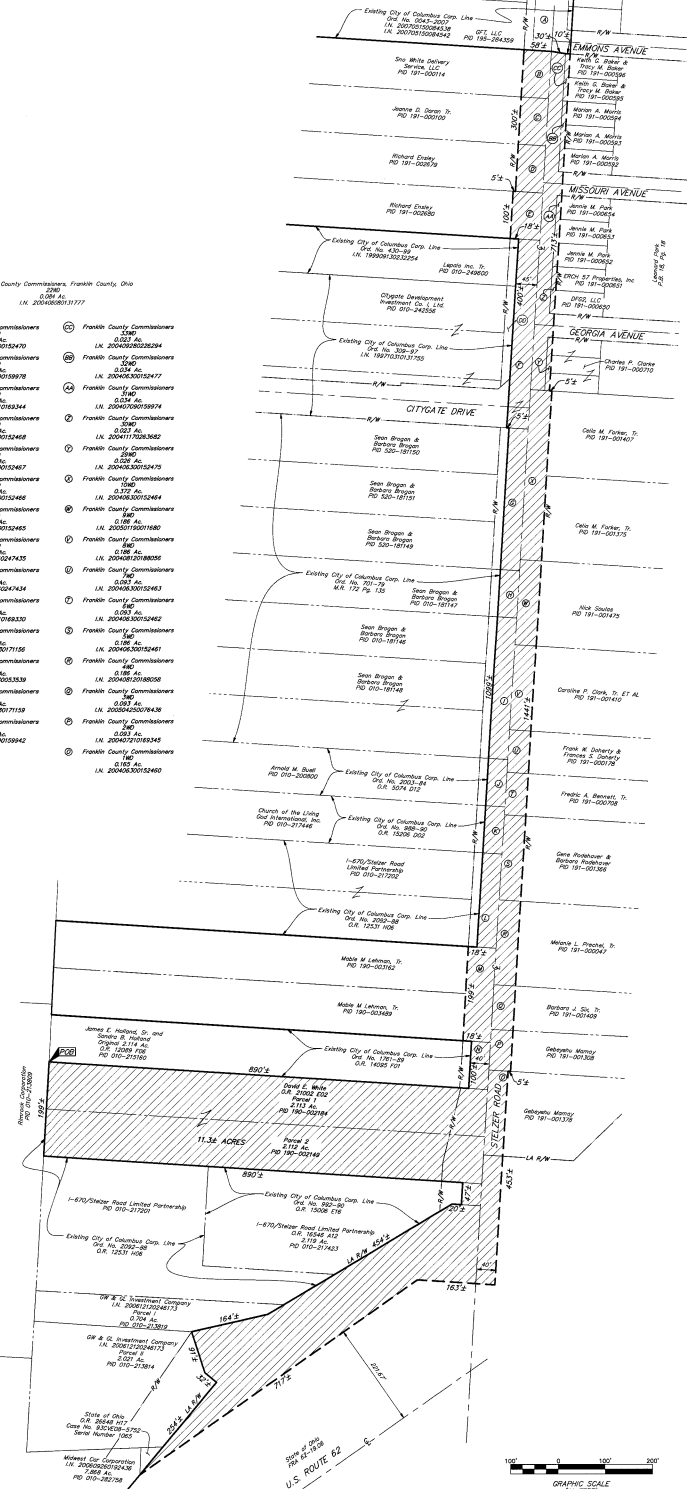


# MAP ANNEXATION AN08-005 11.3 Acres in Mifflin Township David E. White

PROPOSED ANNEXATION OF 11.3± ACRES  
TO CITY OF COLUMBUS FROM MIFFLIN TOWNSHIP  
QUARTER TOWNSHIPS 3 & 4, TOWNSHIP 1, RANGE 17  
UNITED STATES MILITARY LANDS  
MIFFLIN TOWNSHIP, FRANKLIN COUNTY, OHIO



- Board of County Commissioners, Franklin County, Ohio  
7200 IL  
LN. 2004080013177
- ① Franklin County Commissioners 26.40  
LN. 2004080012470
  - ② Franklin County Commissioners 27.40  
LN. 2004070010878
  - ③ Franklin County Commissioners 27.40  
LN. 2004070010878
  - ④ Franklin County Commissioners 27.40  
LN. 2004070010878
  - ⑤ Franklin County Commissioners 27.40  
LN. 2004070010878
  - ⑥ Franklin County Commissioners 27.40  
LN. 2004070010878
  - ⑦ Franklin County Commissioners 27.40  
LN. 2004070010878
  - ⑧ Franklin County Commissioners 27.40  
LN. 2004070010878
  - ⑨ Franklin County Commissioners 27.40  
LN. 2004070010878
  - ⑩ Franklin County Commissioners 27.40  
LN. 2004070010878
  - ⑪ Franklin County Commissioners 27.40  
LN. 2004070010878
  - ⑫ Franklin County Commissioners 27.40  
LN. 2004070010878
  - ⑬ Franklin County Commissioners 27.40  
LN. 2004070010878
  - ⑭ Franklin County Commissioners 27.40  
LN. 2004070010878
  - ⑮ Franklin County Commissioners 27.40  
LN. 2004070010878
  - ⑯ Franklin County Commissioners 27.40  
LN. 2004070010878
  - ⑰ Franklin County Commissioners 27.40  
LN. 2004070010878
  - ⑱ Franklin County Commissioners 27.40  
LN. 2004070010878
  - ⑲ Franklin County Commissioners 27.40  
LN. 2004070010878
  - ⑳ Franklin County Commissioners 27.40  
LN. 2004070010878
  - ㉑ Franklin County Commissioners 27.40  
LN. 2004070010878
  - ㉒ Franklin County Commissioners 27.40  
LN. 2004070010878
  - ㉓ Franklin County Commissioners 27.40  
LN. 2004070010878
  - ㉔ Franklin County Commissioners 27.40  
LN. 2004070010878
  - ㉕ Franklin County Commissioners 27.40  
LN. 2004070010878
  - ㉖ Franklin County Commissioners 27.40  
LN. 2004070010878
  - ㉗ Franklin County Commissioners 27.40  
LN. 2004070010878
  - ㉘ Franklin County Commissioners 27.40  
LN. 2004070010878
  - ㉙ Franklin County Commissioners 27.40  
LN. 2004070010878
  - ㉚ Franklin County Commissioners 27.40  
LN. 2004070010878
  - ㉛ Franklin County Commissioners 27.40  
LN. 2004070010878
  - ㉜ Franklin County Commissioners 27.40  
LN. 2004070010878
  - ㉝ Franklin County Commissioners 27.40  
LN. 2004070010878
  - ㉞ Franklin County Commissioners 27.40  
LN. 2004070010878
  - ㉟ Franklin County Commissioners 27.40  
LN. 2004070010878
  - ㊱ Franklin County Commissioners 27.40  
LN. 2004070010878
  - ㊲ Franklin County Commissioners 27.40  
LN. 2004070010878
  - ㊳ Franklin County Commissioners 27.40  
LN. 2004070010878
  - ㊴ Franklin County Commissioners 27.40  
LN. 2004070010878
  - ㊵ Franklin County Commissioners 27.40  
LN. 2004070010878
  - ㊶ Franklin County Commissioners 27.40  
LN. 2004070010878
  - ㊷ Franklin County Commissioners 27.40  
LN. 2004070010878
  - ㊸ Franklin County Commissioners 27.40  
LN. 2004070010878
  - ㊹ Franklin County Commissioners 27.40  
LN. 2004070010878
  - ㊺ Franklin County Commissioners 27.40  
LN. 2004070010878
  - ㊻ Franklin County Commissioners 27.40  
LN. 2004070010878
  - ㊼ Franklin County Commissioners 27.40  
LN. 2004070010878
  - ㊽ Franklin County Commissioners 27.40  
LN. 2004070010878
  - ㊾ Franklin County Commissioners 27.40  
LN. 2004070010878
  - ㊿ Franklin County Commissioners 27.40  
LN. 2004070010878



**LEGEND**  
 --- EXISTING CITY OF COLUMBUS CORPORATION LINE  
 --- PROPOSED CITY OF COLUMBUS CORPORATION LINE  
 [Hatched Box] AREA TO BE ANNEXED

**NOTE:**  
 Total perimeter of annexation area is 8888 feet, of which 4797 feet is contiguous with the City of Columbus by Ord. Nos. 5843-2007, 430-98, 302-97, 701-79, 2003-84, 866-90, 2092-88, 1751-89 and 992-90 giving 54% perimeter contiguity.

**NOTE:**  
 This annexation does not create islands of unincorporated areas within the limits of the area to be annexed.



<b>EMHT</b>	Date: February 6, 2008
Franklin County Surveyors & Title, Inc. Engineers, Surveyors, Planners, & Architects 10000 W. Dublin Rd., Suite 100 Dublin, OH 43017 Phone: 614.762.6600 Fax: 614.762.6602	Job No: 2007-2542
Sheet 1 of 1	REVISIONS
NO. DATE DESCRIPTION	

