

Photographs – 48 Parkwood, Columbus, Ohio



1. Façade and north elevation, looking southeast



2. Façade, looking east



3. Façade and south elevation, looking northeast



4. South and east elevations, looking west



5. Streetscape, looking north (48 Parkwood at left)



6. Porch detail, looking southeast



7. 1st floor, hallway, looking east



8. 1st floor, formal stairs, looking northeast



9. 1st floor, looking southeast



10. 1st floor, looking south



11. 1st floor, floor detail, looking northeast



12. 1st floor, dining room, looking southeast



13. 1st floor, servants' stairs, looking north



14. 1st floor, looking northeast



15. 2nd floor, formal stairs, looking north



16. 2nd floor, looking northwest



17. 2nd floor, looking southeast



18. 2nd floor, looking northwest

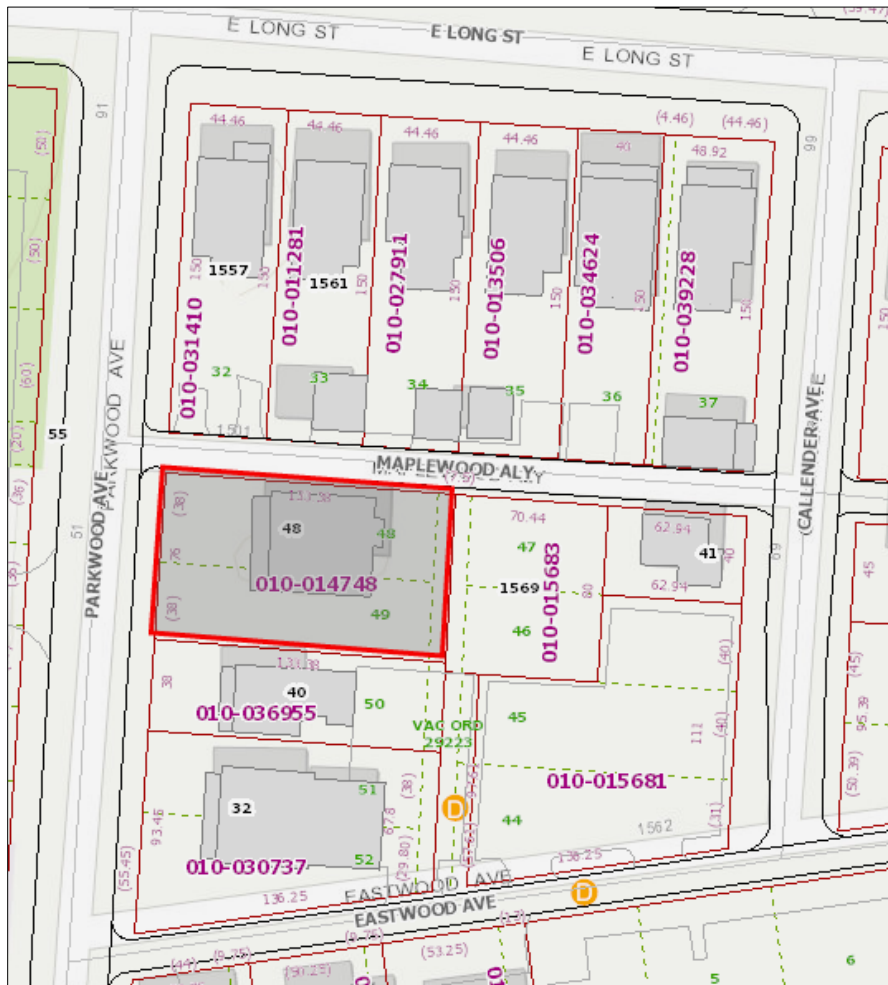


19. 3rd floor, servants' stairs, looking southwest



20. 3rd floor, looking northeast

Maps and Historic Images – 48 Parkwood, Columbus, Ohio



48 Parkwood, Franklin County Auditor, Parcel #010-014748

A VACATION IS UNNECESSARY

If you own a home in Woodland Park Addition, you can have all the advantages of the country with city improvements and only 10 minutes from High St. Visit Woodland Park today and study the conditions that make it the greatest real estate proposition ever presented in this city. Wouldn't the same excellent reasons that convince so many intelligent men and women appeal to you? Here are many ideal homes ready to move into, others building, which will undoubtedly please you. Center Halls, Open Halls, Reception Halls or any kind of a hall you want.

HERE ARE MANY IDEAL HOMES READY FOR YOU TO MOVE INTO. OTHERS BUILDING WHICH WILL UNDOUBTEDLY PLEASE YOU

WE HAVEN'T A BUYER WE'D HESITATE TO REFER YOU TO. WE HAVE QUITE A NUMBER WE WOULD LIKE TO HAVE YOU TALK WITH.

WE DON'T ASK YOUR PATRONAGE FROM SENTIMENT, FRIENDSHIP, OR LONG ACQUAINTANCE, BUT SIMPLY ON THE MERITS OF THE BARGAIN WE OFFER YOU.

The Man of Moderate Means
Who wants a home in the most accessible and desirable location in Columbus cannot afford to court dissatisfaction by making a selection of a lot without first seeing Woodland Park Addition.

A HINT FOR HOME HUNTERS.
Do not buy for comfort only and leave the rest to chance. By a little forethought you can combine a good investment with a purchase of a fine comfortable home. Woodland Park presents such an opportunity.

The undeniable fine qualities of this addition are drawing many people, and almost every day sales are made and as it becomes better known it bids fair to be the real estate success of the year in Columbus.

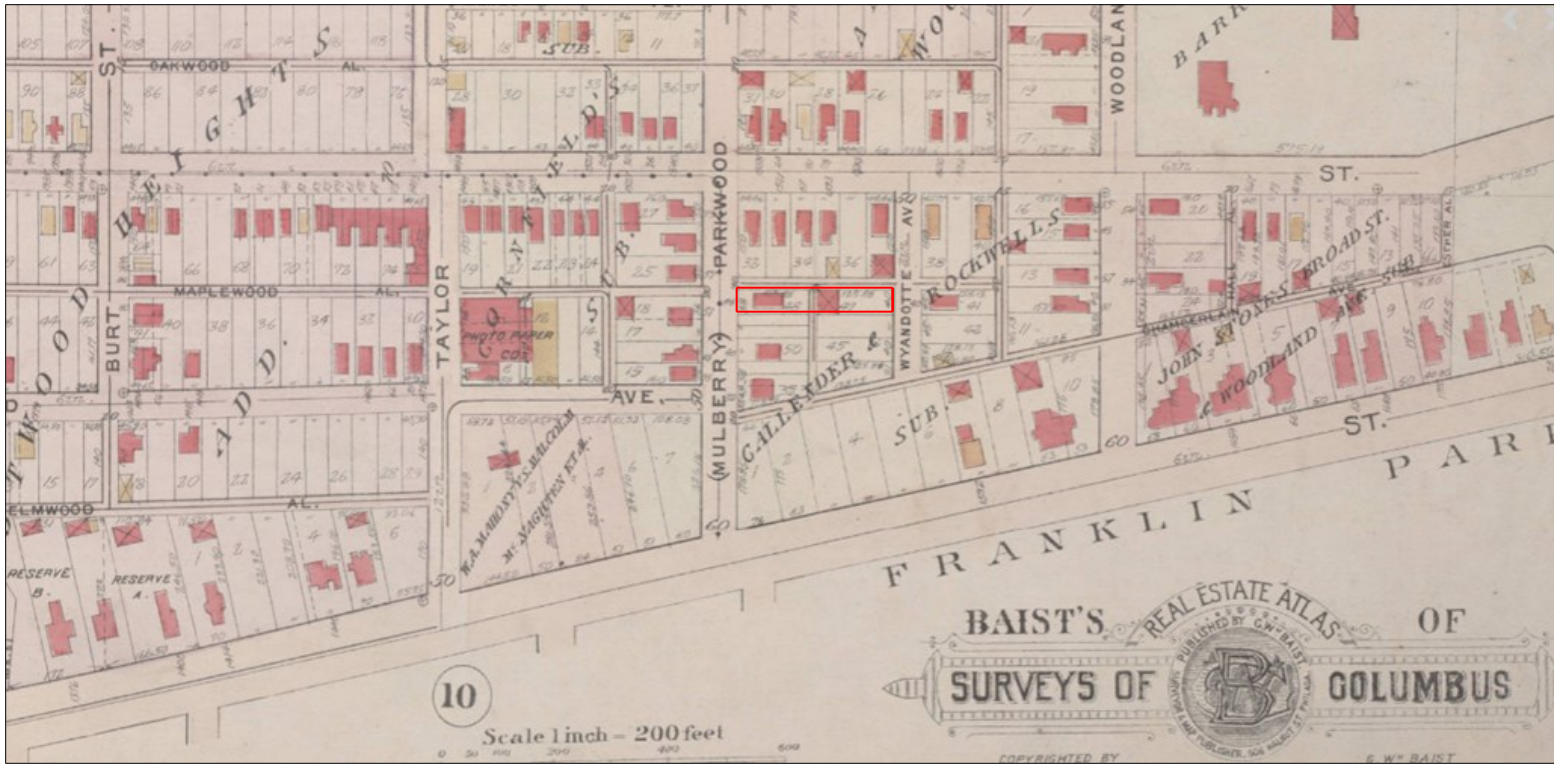
What is the cause of this remarkable success when other new additions have been meeting with but nominal patronage? There is not one single objection to Woodland Park Addition and its advantages are almost innumerable. **AND THE PEOPLE ARE BEGINNING TO FIND IT OUT.** "My! What a pretty place!" is the invariable expression of every one who visits Woodland Park, and the beauty of it grows upon you every time you come. We give you paved streets, cement sidewalks, water, gas, sewerage, electric lights, plenty of fine forest trees and one of the best school districts in the city. Woodland Park Addition has the advantage of three electric car lines by which you can reach High Street in fifteen minutes.

WOODLAND PARK ADDITION

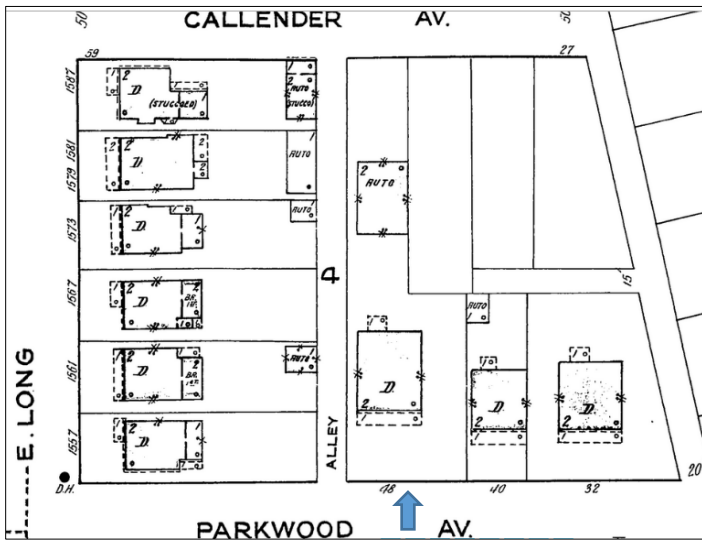
Woodland Park Addition is located 1½ blocks north of Long street in the beautiful wooded section one block west of Woodland Ave, the finest part of the city. Leave the car corner of Long and Mulberry streets, look north on Mulberry street and you will see our sign and find a salesman on the ground or at the office in the red brick house, corner Mulberry and Granville streets. The prices are so low that investors are astounded and the terms can be made to suit all who purchase.

CITIZENS' PHONE 2506 **W. W. McNEILLE** CITIZENS' PHONE 2506

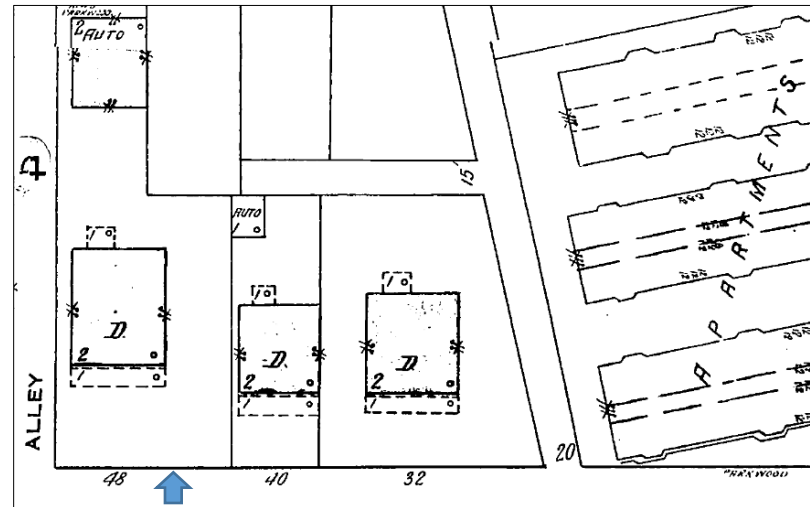
Woodland Part Addition Advertisement, Columbus Dispatch, July 17, 1904



1910 Baist Real Estate Map



1921 Sanborn Map



1951 Sanborn Map

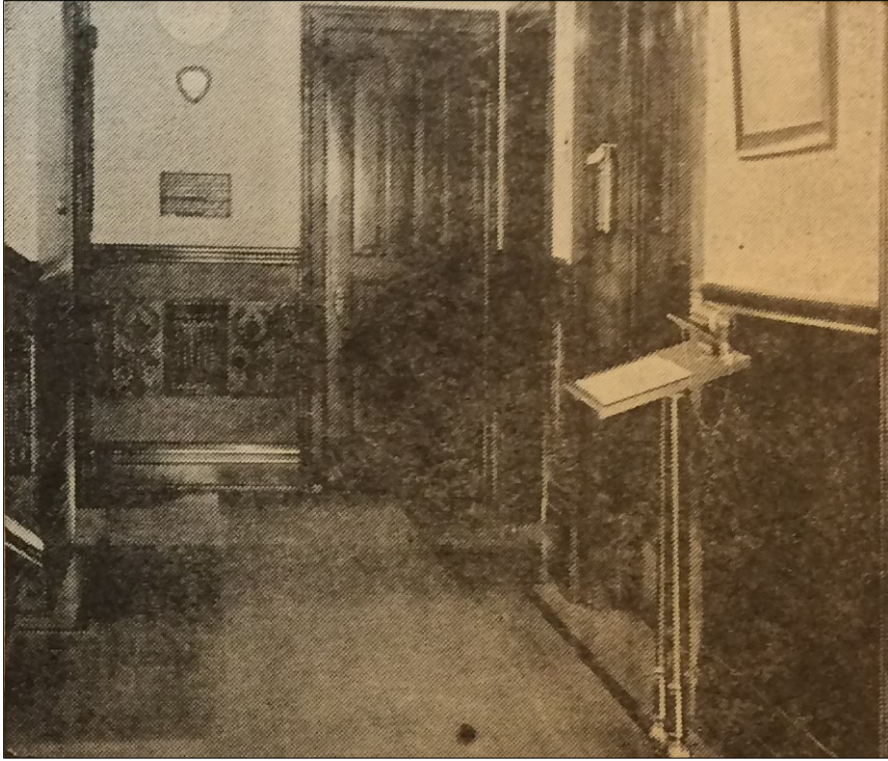


Headquarters of
THE OHIO BAPTIST GENERAL ASSOCIATION

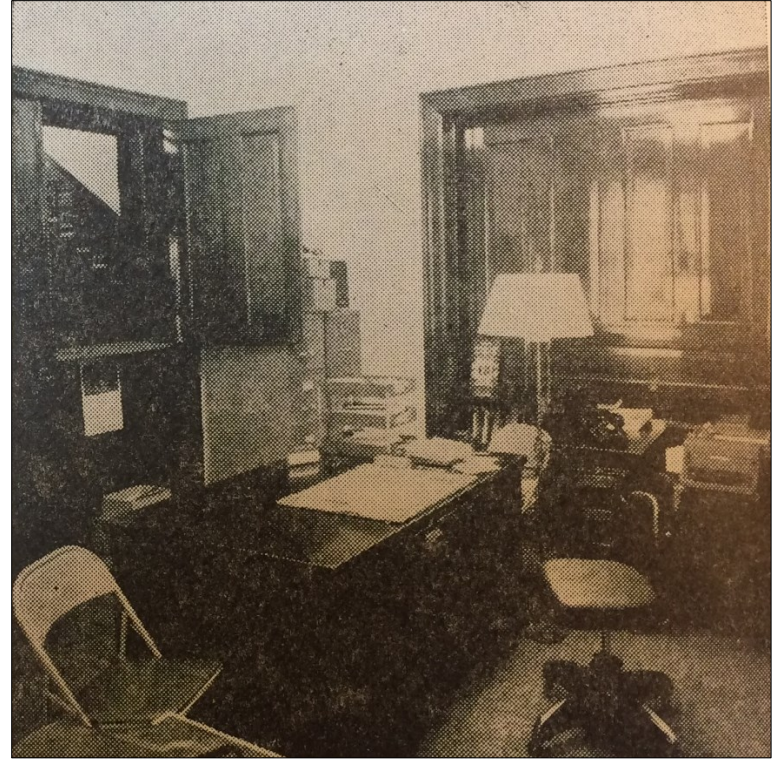


Apartments in rear of Headquarters

Historic images from *Souvenir Program, 60th Annual Sitting of the Ohio Baptist General Association, 1957.*



Hallway



General Office (front southwest corner room)



Women's Department Work Room



Executive Secretary's Office (dining room)