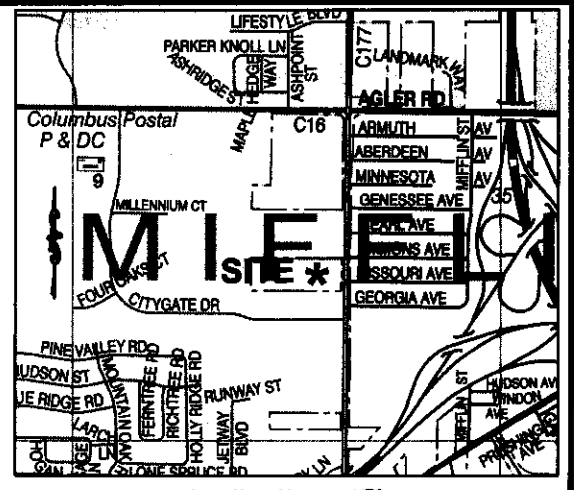
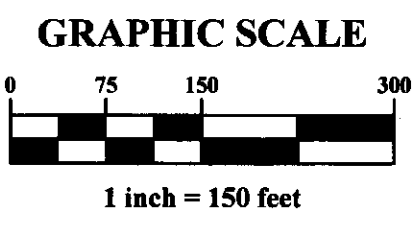
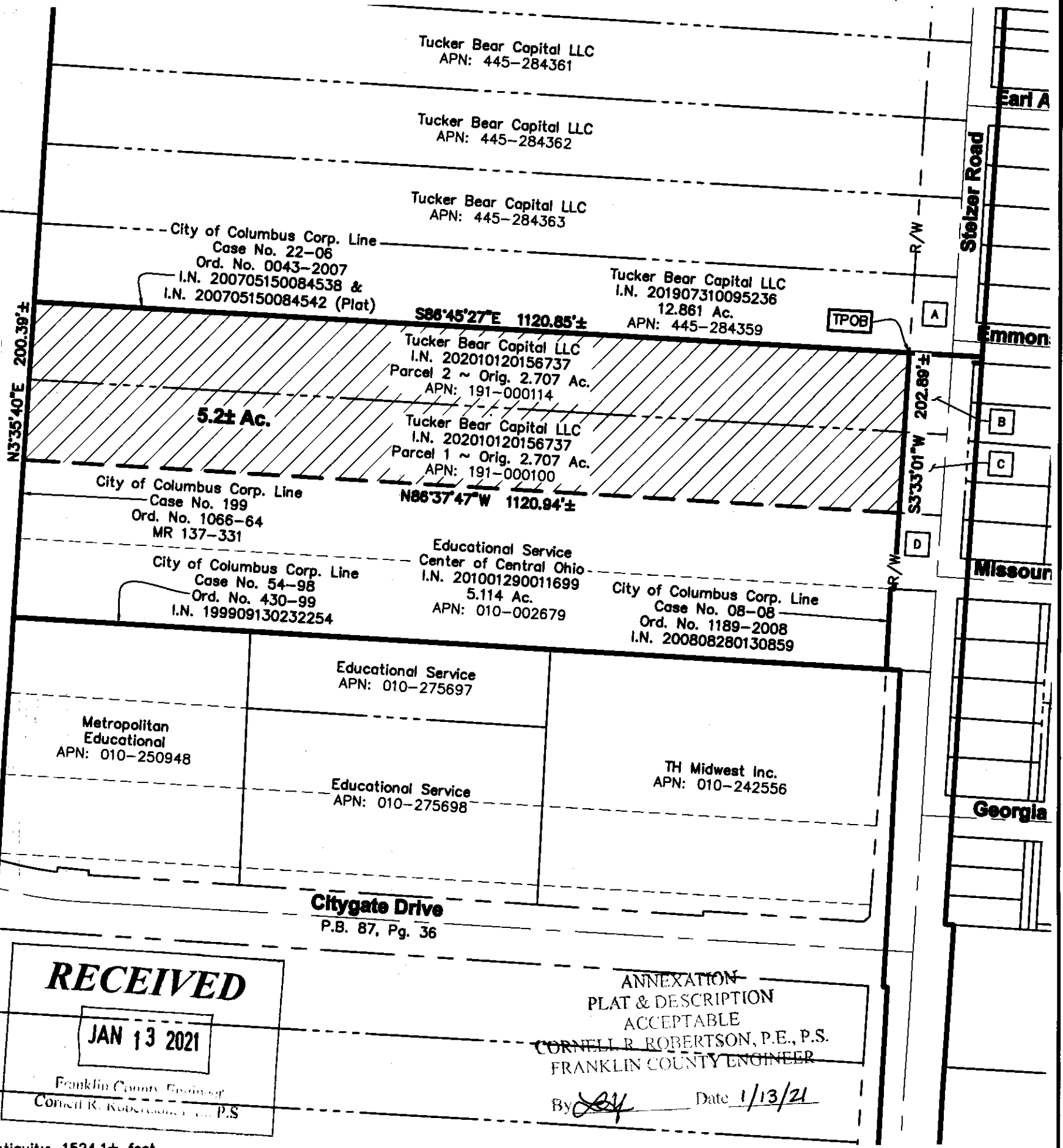


**5.2± ACRE ANNEXATION FROM THE
TOWNSHIP OF MIFFLIN
TO THE CITY OF COLUMBUS**
Quarter Township 3, Township 1, Range 17
Mifflin Township, Franklin County, Ohio



Trustees Agler Rd Parcel
APN: 010-143575

Avistone Citygate H LLC et al
I.N. 201711200164330
11.689 Ac.
APN: 010-265872



RECEIVED
JAN 13 2021
Franklin County Engineer
Cornell R. Robertson, P.E., P.S.

ANNEXATION-
PLAT & DESCRIPTION
ACCEPTABLE
CORNELL R. ROBERTSON, P.E., P.S.
FRANKLIN COUNTY ENGINEER
By *[Signature]* Date 1/13/21

Length of Contiguity: 1524.1± feet
Total Length of Perimeter: 2645.1± feet
Percentage of Contiguity: 57.6±%

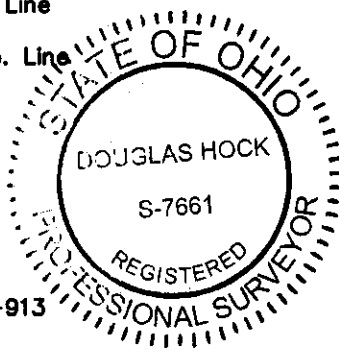
No islands of township property are created by this annexation.

Legend

- Area to be Annexed
- Existing City of City of Columbus Corp. Line
- Proposed City of City of Columbus Corp. Line

- A** Franklin County Commissioners
I.N. 200406300152470
Parcel 28WD
0.666 Ac.
- B** Franklin County Commissioners
200407090159978
Parcel 27WD
0.133 Ac.
- C** Franklin County Commissioners
I.N. 200407210169344
Parcel 26WD
0.133 Ac.
- D** Franklin County Commissioners
I.N. 200406300152468
Parcel 25WD
0.133 Ac.

[Signature]
Douglas R. Hock
Professional Surveyor No. 7661
Date: 1/13/21



Advanced Civil Design, Inc
781 Science Boulevard, Suite 100
Gahanna, OH 43230
Phone 614-428-7750

Job No.: 20-0002-913
Date: 12/04/20