

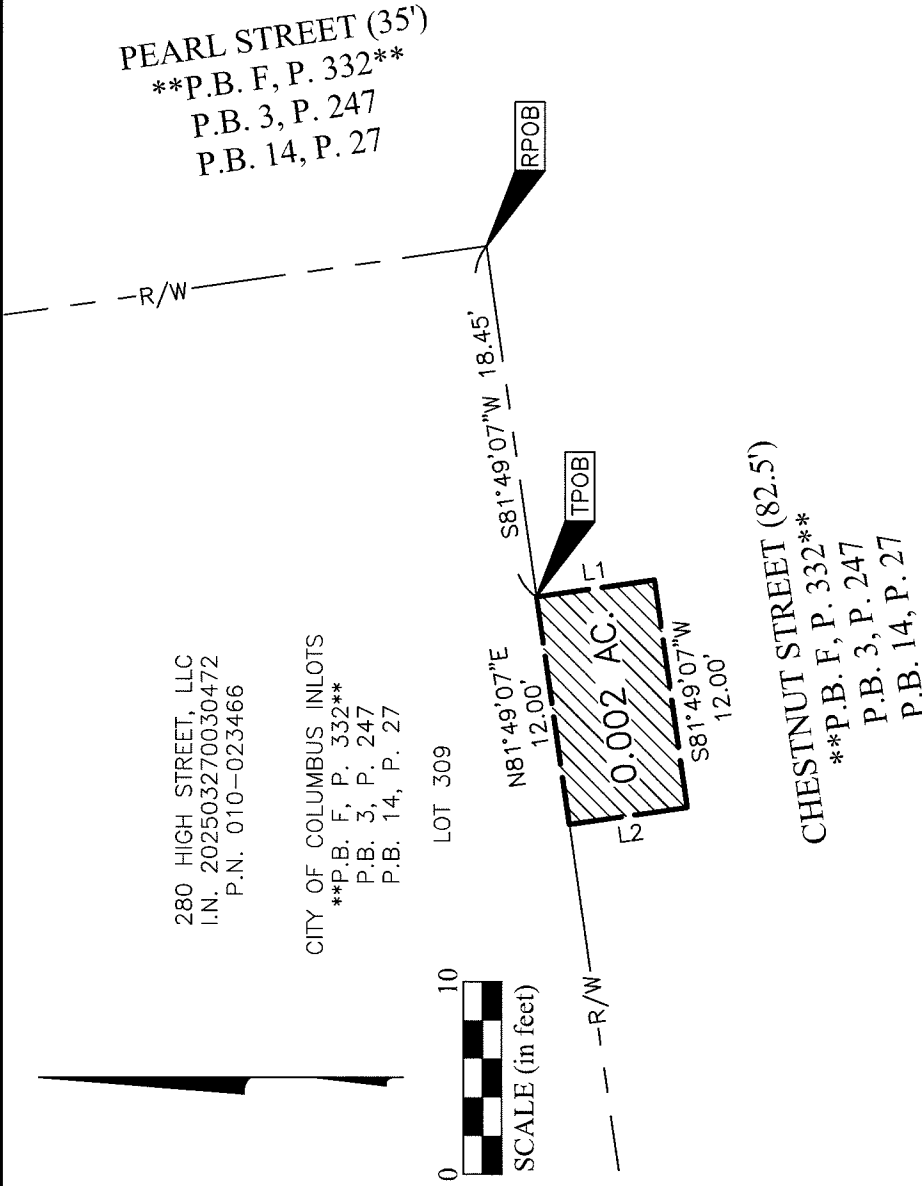


BALCONY ENCROACHMENT EASEMENT
BETWEEN ELEVATION OF 772.00' TO 974.00' (NAVD 88)
LOCATED OVER THE RIGHT-OF-WAY OF CHESTNUT STREET
LOT 10, SECTION 8, TOWNSHIP 5, RANGE 22, REFUGEE LANDS
CITY OF COLUMBUS, COUNTY OF FRANKLIN, STATE OF OHIO

Date: April 14, 2026
 Scale: 1" = 10'
 Job No: 2025-0387
 Sheet No: 1 of 1

280 HIGH STREET, LLC
 I.N. 202503270030472
 P.N. 010-023466

CITY OF COLUMBUS INLOTS
 P.B. F, P. 332
 P.B. 3, P. 247
 P.B. 14, P. 27



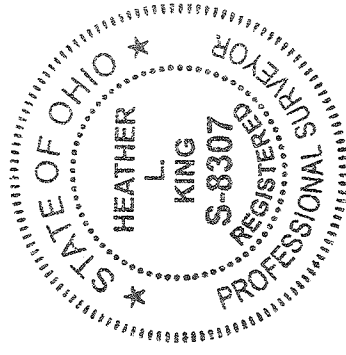
VERTICAL DATUM:

The Vertical Datum is based on the elevation established by the Franklin County Engineering Department, monument COC 13-83, being 752.140 feet in elevation. The said monument being source benchmark with elevation that is based on the North American Vertical Datum of 1988.

****NOTE:**

Dedicated in Plat Book "F", Page 332 (destroyed by fire), replatted in Plat Book 3, Page 247, and also represented in Plat Book 14, Page 27.

LINE TABLE		
LINE	BEARING	DISTANCE
L1	S08°10'53"E	6.22'
L2	N08°10'53"W	6.22'



By Heather L. King 4/20/26
 Heather L. King
 Professional Surveyor No. 8307
 hking@emht.com
 Date