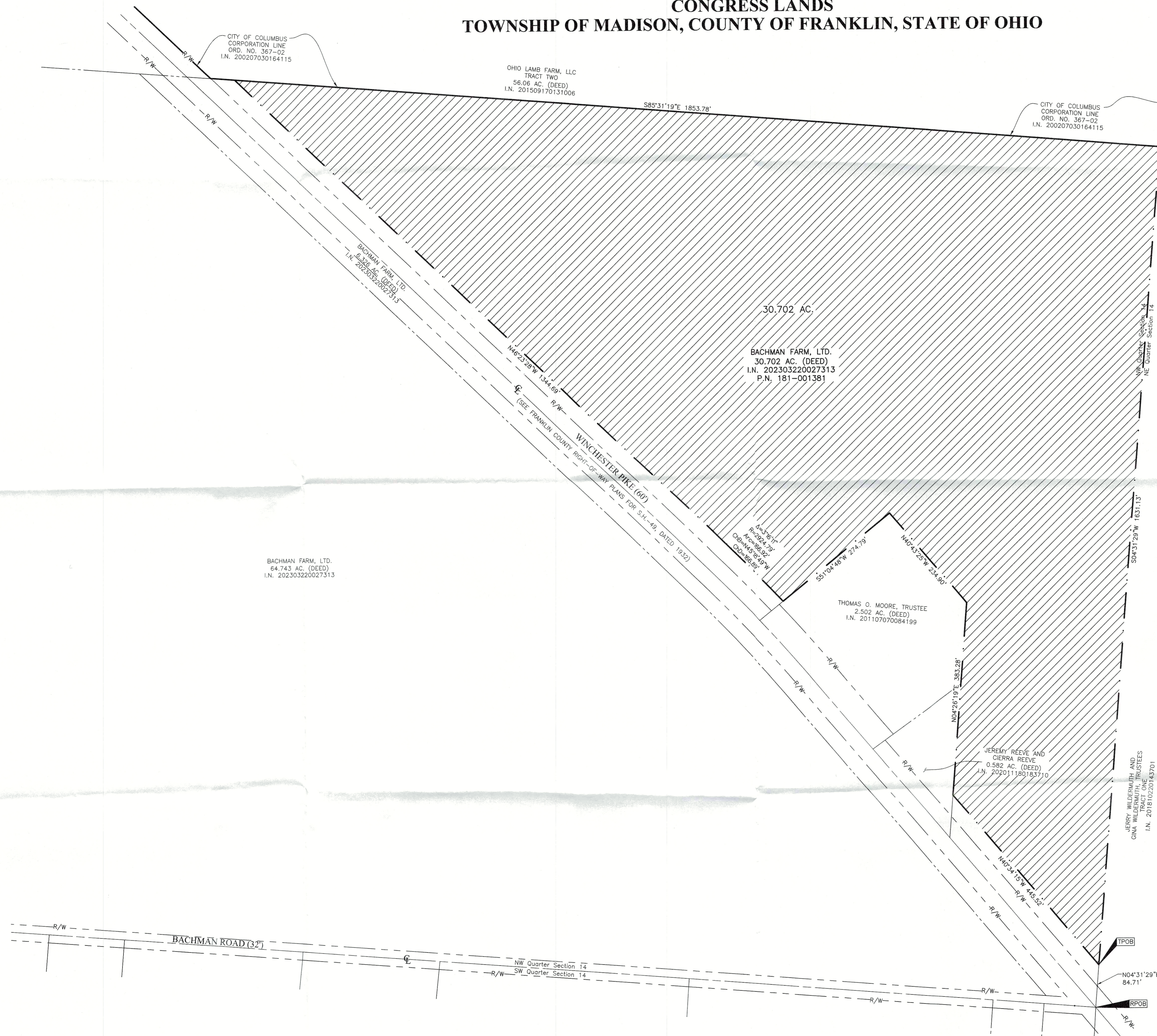


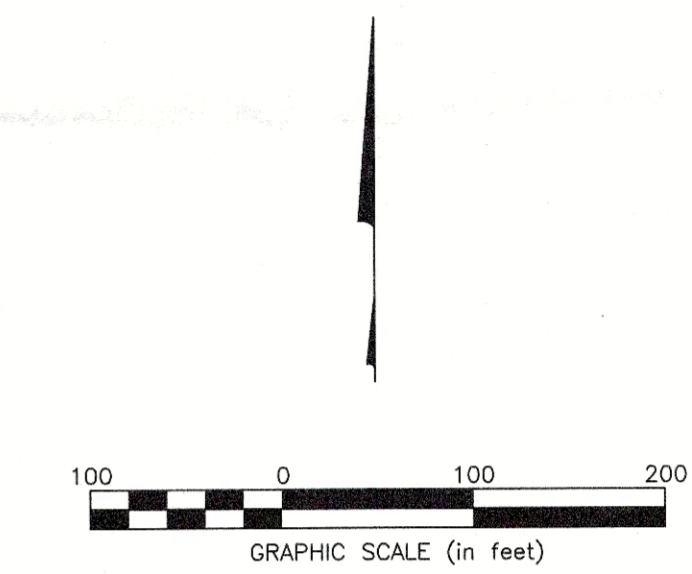
PROPOSED ANNEXATION OF 30.702 ACRES FROM MADISON TOWNSHIP TO THE CITY OF COLUMBUS

SECTION 14, TOWNSHIP 11, RANGE 21
CONGRESS LANDS
TOWNSHIP OF MADISON, COUNTY OF FRANKLIN, STATE OF OHIO



RECEIVED
MAR 23 2023
Franklin County Engineer
Cornell R. Robertson, P.E., P.S.

ANNEXATION
PLAT & DESCRIPTION
ACCEPTABLE
CORNELL R. ROBERTSON, P.E., P.S.
FRANKLIN COUNTY ENGINEER
By JRH/FDA Date 03/23/23



AREA TO BE ANNEXED
FROM MADISON TOWNSHIP TO THE CITY OF COLUMBUS

PROPOSED CITY OF COLUMBUS CORPORATION LINE

EXISTING CITY OF COLUMBUS CORPORATION LINE

Contiguity Note - 30.702 Acres:
Total perimeter of annexation area is 6,335 feet, of which
1,854 feet is contiguous with the City of Columbus by
Ordinance Number 367-02, giving 29% perimeter contiguity.

Note:
This annexation does not create islands of unincorporated
areas within the limits of the area to be annexed.



Matthew A. Kirk 23 MARCH 23
Matthew A. Kirk
Professional Surveyor No. 7865
mkirk@emht.com

EMHT Evans, Mechwart, Hamblen & Tilton, Inc. Engineers • Surveyors • Planners • Scientists 5500 New Albany Road, Columbus, OH 43254 Phone: 614.775.4500 • Toll free: 888.775.3448 emht.com		Date: March 23, 2023
Scale: 1" = 100'		Job No: 2021-1307
Sheet: 1 of 1		
REVISIONS		
MARK	DATE	DESCRIPTION