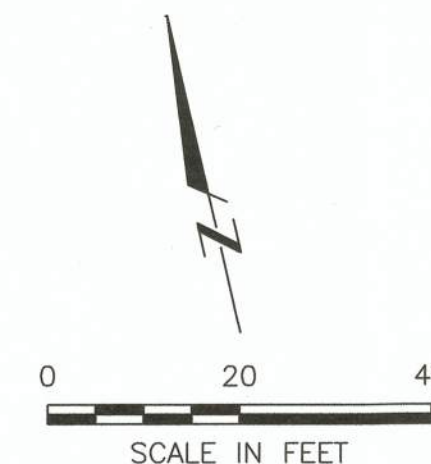


PROPOSED ANNEXATION OF 0.2± ACRES TO
THE CITY OF COLUMBUS FROM FRANKLIN TOWNSHIP
State of Ohio, County of Franklin, Township of Franklin
Virginia Military Survey No. 717



LOCATION MAP
Not To Scale



RECEIVED

NOV 24 2025

FRANKLIN COUNTY ENGINEER
ADAM W. FOWLER, P.E., P.S.

ANNEXATION
PLAT & DESCRIPTION
ACCEPTABLE
ADAM W. FOWLER, P.E., P.S.
FRANKLIN COUNTY ENGINEER
BY: FDA DATE: 11/24/25

ANNEXATION ACREAGE BREAKDOWN

PARCEL ID	ACREAGE	TOWNSHIP
140-001690-00	0.2± Ac.	Franklin
Total:	0.2± Ac.	(To City of Columbus)

- LEGEND**
- Property Line
 - R/W Right-of-Way
 - POB Point of Beginning
 - Existing City of Columbus Corp. Line
 - Proposed Annexation to City of Columbus
 - Proposed Annexation to City of Columbus

NOTE

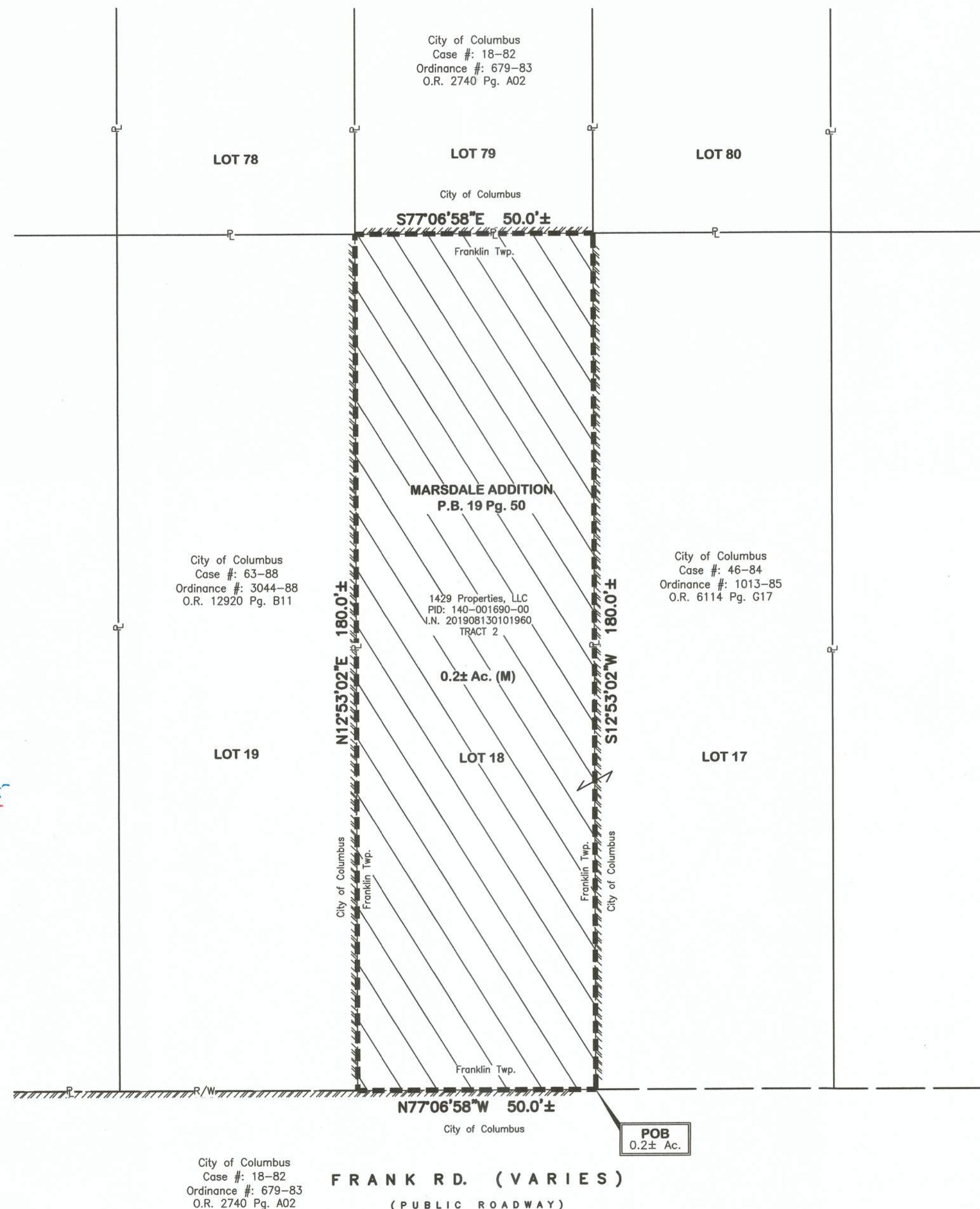
Total perimeter of annexation is 460.0± feet, of which 460.0± feet is contiguous with the City of Columbus by Case Number 18-82 (Ordinance Number 679-83, City of Columbus, Official Record 2740, Pg. A02), Case Number 46-84 (Ordinance Number 1013-85, City of Columbus, Official Record 6114, Pg. G17), and Case Number 63-88 (Ordinance Number 3044-88, City of Columbus, Official Record 12920, Pg. B11) giving 100% border continuity.

This annexation does not create an island of unincorporated areas within the limits of the area to be annexed.

This exhibit is for annexation purposes only and is not to be used for transfer.



2130 QUARRY TRAILS DR, 2ND FLOOR
COLUMBUS, OHIO 43228
(614) 299-2999
(614) 299-2992 (Fax)
www.EPFERRIS.com



BY: *Garrett Brown* 11/24/2025
Garrett G. Brown, P.S., E.I.
Registered Surveyor No. 8797

DRWN BY BAP CHK BY GGB DATE 2025-11-20