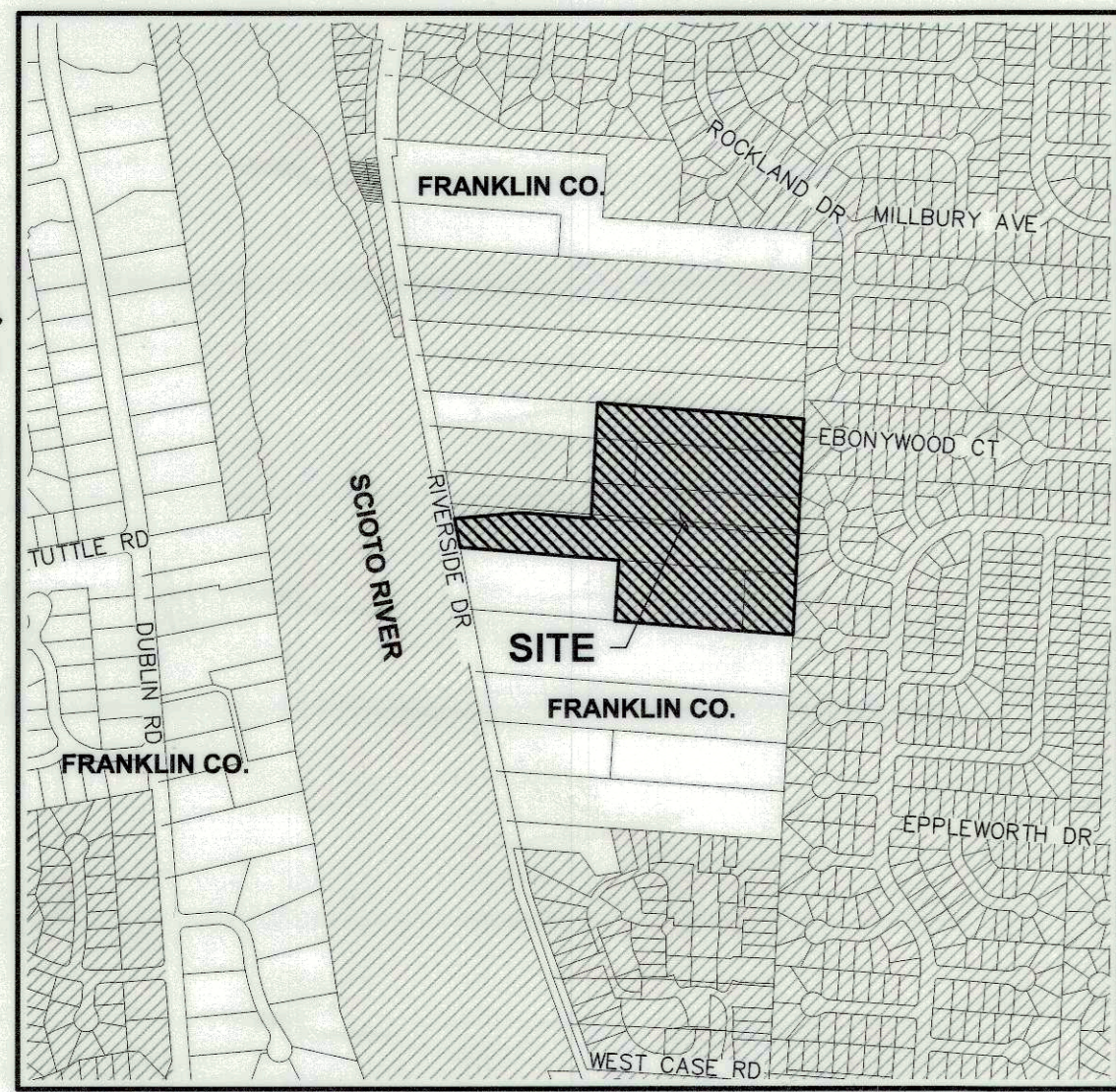


FINAL PLAT FOR RAVELLO

CITY OF COLUMBUS, FRANKLIN COUNTY, OHIO
QUARTER TOWNSHIP 3, TOWNSHIP 2, RANGE 19, U.S.M.D.



VICINITY MAP
SCALE: 1" = 750'
COLUMBUS CORPORATION LIMITS

Situated in State of Ohio, County of Franklin, the Township of Perry and the City of Columbus, being in Quarter Township 3, Township 2, Range 19, United States Military Lands, and containing 17.819 acres of land, more or less, as conveyed by deed of record to Romanelli & Hughes Building Company of record in Instrument Numbers 201810040135401, 201811200157755, 201810170141428, 201810040135402, 201906180072619 & 201910230140791 in the Recorder's Office, Franklin County, Ohio.

The undersigned, Romanelli & Hughes Building Company, by _____, Authorized Signatory for the lands platted hereon, duly authorized in the premises, does hereby certify that this plat correctly represents Ravello, a subdivision containing Lots numbered 1 to 8 and 10 to 57, inclusive, Reserves A - E, and does hereby accept this plat of the same and does dedicate that portion of Riverside Drive, as represented herein to the public.

Easements are hereby reserved in, over and under areas designated on this plat as "Reserve 'A'", "Reserve 'B'", "Reserve 'C'", "Reserve 'D'", "Reserve 'E'", "Reserve 'F'", "Reserve 'G'", "Reserve 'H'", "Reserve 'I'", "Reserve 'J'", "Reserve 'K'", "Reserve 'L'", "Reserve 'M'", "Reserve 'N'", "Reserve 'O'", "Reserve 'P'", "Reserve 'Q'", "Reserve 'R'", "Reserve 'S'", "Reserve 'T'", "Reserve 'U'", "Reserve 'V'", "Reserve 'W'", "Reserve 'X'", "Reserve 'Y'", "Reserve 'Z'", "Reserve 'AA'", "Reserve 'AB'", "Reserve 'AC'", "Reserve 'AD'", "Reserve 'AE'", "Reserve 'AF'", "Reserve 'AG'", "Reserve 'AH'", "Reserve 'AI'", "Reserve 'AJ'", "Reserve 'AK'", "Reserve 'AL'", "Reserve 'AM'", "Reserve 'AN'", "Reserve 'AO'", "Reserve 'AP'", "Reserve 'AQ'", "Reserve 'AR'", "Reserve 'AS'", "Reserve 'AT'", "Reserve 'AU'", "Reserve 'AV'", "Reserve 'AW'", "Reserve 'AX'", "Reserve 'AY'", "Reserve 'AZ'", "Reserve 'BA'", "Reserve 'BB'", "Reserve 'BC'", "Reserve 'BD'", "Reserve 'BE'", "Reserve 'BF'", "Reserve 'BG'", "Reserve 'BH'", "Reserve 'BI'", "Reserve 'BJ'", "Reserve 'BK'", "Reserve 'BL'", "Reserve 'BM'", "Reserve 'BN'", "Reserve 'BO'", "Reserve 'BP'", "Reserve 'BQ'", "Reserve 'BR'", "Reserve 'BS'", "Reserve 'BT'", "Reserve 'BU'", "Reserve 'BV'", "Reserve 'BW'", "Reserve 'BX'", "Reserve 'BY'", "Reserve 'BZ'", "Reserve 'CA'", "Reserve 'CB'", "Reserve 'CC'", "Reserve 'CD'", "Reserve 'CE'", "Reserve 'CF'", "Reserve 'CG'", "Reserve 'CH'", "Reserve 'CI'", "Reserve 'CJ'", "Reserve 'CK'", "Reserve 'CL'", "Reserve 'CM'", "Reserve 'CN'", "Reserve 'CO'", "Reserve 'CP'", "Reserve 'CQ'", "Reserve 'CR'", "Reserve 'CS'", "Reserve 'CT'", "Reserve 'CU'", "Reserve 'CV'", "Reserve 'CW'", "Reserve 'CX'", "Reserve 'CY'", "Reserve 'CZ'", "Reserve 'DA'", "Reserve 'DB'", "Reserve 'DC'", "Reserve 'DD'", "Reserve 'DE'", "Reserve 'DF'", "Reserve 'DG'", "Reserve 'DH'", "Reserve 'DI'", "Reserve 'DJ'", "Reserve 'DK'", "Reserve 'DL'", "Reserve 'DM'", "Reserve 'DN'", "Reserve 'DO'", "Reserve 'DP'", "Reserve 'DQ'", "Reserve 'DR'", "Reserve 'DS'", "Reserve 'DT'", "Reserve 'DU'", "Reserve 'DV'", "Reserve 'DW'", "Reserve 'DX'", "Reserve 'DY'", "Reserve 'DZ'", "Reserve 'EA'", "Reserve 'EB'", "Reserve 'EC'", "Reserve 'ED'", "Reserve 'EE'", "Reserve 'EF'", "Reserve 'EG'", "Reserve 'EH'", "Reserve 'EI'", "Reserve 'EJ'", "Reserve 'EK'", "Reserve 'EL'", "Reserve 'EM'", "Reserve 'EN'", "Reserve 'EO'", "Reserve 'EP'", "Reserve 'EQ'", "Reserve 'ER'", "Reserve 'ES'", "Reserve 'ET'", "Reserve 'EU'", "Reserve 'EV'", "Reserve 'EW'", "Reserve 'EX'", "Reserve 'EY'", "Reserve 'EZ'", "Reserve 'FA'", "Reserve 'FB'", "Reserve 'FC'", "Reserve 'FD'", "Reserve 'FE'", "Reserve 'FF'", "Reserve 'FG'", "Reserve 'FH'", "Reserve 'FI'", "Reserve 'FJ'", "Reserve 'FK'", "Reserve 'FL'", "Reserve 'FM'", "Reserve 'FN'", "Reserve 'FO'", "Reserve 'FP'", "Reserve 'FQ'", "Reserve 'FR'", "Reserve 'FS'", "Reserve 'FT'", "Reserve 'FU'", "Reserve 'FV'", "Reserve 'FW'", "Reserve 'FX'", "Reserve 'FY'", "Reserve 'FZ'", "Reserve 'GA'", "Reserve 'GB'", "Reserve 'GC'", "Reserve 'GD'", "Reserve 'GE'", "Reserve 'GF'", "Reserve 'GG'", "Reserve 'GH'", "Reserve 'GI'", "Reserve 'GJ'", "Reserve 'GK'", "Reserve 'GL'", "Reserve 'GM'", "Reserve 'GN'", "Reserve 'GO'", "Reserve 'GP'", "Reserve 'GQ'", "Reserve 'GR'", "Reserve 'GS'", "Reserve 'GT'", "Reserve 'GU'", "Reserve 'GV'", "Reserve 'GW'", "Reserve 'GX'", "Reserve 'GY'", "Reserve 'GZ'", "Reserve 'HA'", "Reserve 'HB'", "Reserve 'HC'", "Reserve 'HD'", "Reserve 'HE'", "Reserve 'HF'", "Reserve 'HG'", "Reserve 'HH'", "Reserve 'HI'", "Reserve 'HJ'", "Reserve 'HK'", "Reserve 'HL'", "Reserve 'HM'", "Reserve 'HN'", "Reserve 'HO'", "Reserve 'HP'", "Reserve 'HQ'", "Reserve 'HR'", "Reserve 'HS'", "Reserve 'HT'", "Reserve 'HU'", "Reserve 'HV'", "Reserve 'HW'", "Reserve 'HX'", "Reserve 'HY'", "Reserve 'HZ'", "Reserve 'IA'", "Reserve 'IB'", "Reserve 'IC'", "Reserve 'ID'", "Reserve 'IE'", "Reserve 'IF'", "Reserve 'IG'", "Reserve 'IH'", "Reserve 'II'", "Reserve 'IJ'", "Reserve 'IK'", "Reserve 'IL'", "Reserve 'IM'", "Reserve 'IN'", "Reserve 'IO'", "Reserve 'IP'", "Reserve 'IQ'", "Reserve 'IR'", "Reserve 'IS'", "Reserve 'IT'", "Reserve 'IU'", "Reserve 'IV'", "Reserve 'IW'", "Reserve 'IX'", "Reserve 'IY'", "Reserve 'IZ'", "Reserve 'JA'", "Reserve 'JB'", "Reserve 'JC'", "Reserve 'JD'", "Reserve 'JE'", "Reserve 'JF'", "Reserve 'JG'", "Reserve 'JH'", "Reserve 'JI'", "Reserve 'JJ'", "Reserve 'JK'", "Reserve 'JL'", "Reserve 'JM'", "Reserve 'JN'", "Reserve 'JO'", "Reserve 'JP'", "Reserve 'JQ'", "Reserve 'JR'", "Reserve 'JS'", "Reserve 'JT'", "Reserve 'JU'", "Reserve 'JV'", "Reserve 'JW'", "Reserve 'JX'", "Reserve 'JY'", "Reserve 'JZ'", "Reserve 'KA'", "Reserve 'KB'", "Reserve 'KC'", "Reserve 'KD'", "Reserve 'KE'", "Reserve 'KF'", "Reserve 'KG'", "Reserve 'KH'", "Reserve 'KI'", "Reserve 'KJ'", "Reserve 'KL'", "Reserve 'KM'", "Reserve 'KN'", "Reserve 'KO'", "Reserve 'KP'", "Reserve 'KQ'", "Reserve 'KR'", "Reserve 'KS'", "Reserve 'KT'", "Reserve 'KU'", "Reserve 'KV'", "Reserve 'KW'", "Reserve 'KX'", "Reserve 'KY'", "Reserve 'KZ'", "Reserve 'LA'", "Reserve 'LB'", "Reserve 'LC'", "Reserve 'LD'", "Reserve 'LE'", "Reserve 'LF'", "Reserve 'LG'", "Reserve 'LH'", "Reserve 'LI'", "Reserve 'LJ'", "Reserve 'LK'", "Reserve 'LL'", "Reserve 'LM'", "Reserve 'LN'", "Reserve 'LO'", "Reserve 'LP'", "Reserve 'LQ'", "Reserve 'LR'", "Reserve 'LS'", "Reserve 'LT'", "Reserve 'LU'", "Reserve 'LV'", "Reserve 'LW'", "Reserve 'LX'", "Reserve 'LY'", "Reserve 'LZ'", "Reserve 'MA'", "Reserve 'MB'", "Reserve 'MC'", "Reserve 'MD'", "Reserve 'ME'", "Reserve 'MF'", "Reserve 'MG'", "Reserve 'MH'", "Reserve 'MI'", "Reserve 'MJ'", "Reserve 'MK'", "Reserve 'ML'", "Reserve 'MN'", "Reserve 'MO'", "Reserve 'MP'", "Reserve 'MQ'", "Reserve 'MR'", "Reserve 'MS'", "Reserve 'MT'", "Reserve 'MU'", "Reserve 'MV'", "Reserve 'MW'", "Reserve 'MX'", "Reserve 'MY'", "Reserve 'MZ'", "Reserve 'NA'", "Reserve 'NB'", "Reserve 'NC'", "Reserve 'ND'", "Reserve 'NE'", "Reserve 'NF'", "Reserve 'NG'", "Reserve 'NH'", "Reserve 'NI'", "Reserve 'NJ'", "Reserve 'NK'", "Reserve 'NL'", "Reserve 'NM'", "Reserve 'NO'", "Reserve 'NP'", "Reserve 'NQ'", "Reserve 'NR'", "Reserve 'NS'", "Reserve 'NT'", "Reserve 'NU'", "Reserve 'NV'", "Reserve 'NW'", "Reserve 'NX'", "Reserve 'NY'", "Reserve 'NZ'", "Reserve 'OA'", "Reserve 'OB'", "Reserve 'OC'", "Reserve 'OD'", "Reserve 'OE'", "Reserve 'OF'", "Reserve 'OG'", "Reserve 'OH'", "Reserve 'OI'", "Reserve 'OJ'", "Reserve 'OK'", "Reserve 'OL'", "Reserve 'OM'", "Reserve 'ON'", "Reserve 'OO'", "Reserve 'OP'", "Reserve 'OQ'", "Reserve 'OR'", "Reserve 'OS'", "Reserve 'OT'", "Reserve 'OU'", "Reserve 'OV'", "Reserve 'OW'", "Reserve 'OX'", "Reserve 'OY'", "Reserve 'OZ'", "Reserve 'PA'", "Reserve 'PB'", "Reserve 'PC'", "Reserve 'PD'", "Reserve 'PE'", "Reserve 'PF'", "Reserve 'PG'", "Reserve 'PH'", "Reserve 'PI'", "Reserve 'PJ'", "Reserve 'PK'", "Reserve 'PL'", "Reserve 'PM'", "Reserve 'PN'", "Reserve 'PO'", "Reserve 'PP'", "Reserve 'PQ'", "Reserve 'PR'", "Reserve 'PS'", "Reserve 'PT'", "Reserve 'PU'", "Reserve 'PV'", "Reserve 'PW'", "Reserve 'PX'", "Reserve 'PY'", "Reserve 'PZ'", "Reserve 'QA'", "Reserve 'QB'", "Reserve 'QC'", "Reserve 'QD'", "Reserve 'QE'", "Reserve 'QF'", "Reserve 'QG'", "Reserve 'QH'", "Reserve 'QI'", "Reserve 'QJ'", "Reserve 'QK'", "Reserve 'QL'", "Reserve 'QM'", "Reserve 'QN'", "Reserve 'QO'", "Reserve 'QP'", "Reserve 'QQ'", "Reserve 'QR'", "Reserve 'QS'", "Reserve 'QT'", "Reserve 'QU'", "Reserve 'QV'", "Reserve 'QW'", "Reserve 'QX'", "Reserve 'QY'", "Reserve 'QZ'", "Reserve 'RA'", "Reserve 'RB'", "Reserve 'RC'", "Reserve 'RD'", "Reserve 'RE'", "Reserve 'RF'", "Reserve 'RG'", "Reserve 'RH'", "Reserve 'RI'", "Reserve 'RJ'", "Reserve 'RK'", "Reserve 'RL'", "Reserve 'RM'", "Reserve 'RN'", "Reserve 'RO'", "Reserve 'RP'", "Reserve 'RQ'", "Reserve 'RR'", "Reserve 'RS'", "Reserve 'RT'", "Reserve 'RU'", "Reserve 'RV'", "Reserve 'RW'", "Reserve 'RX'", "Reserve 'RY'", "Reserve 'RZ'", "Reserve 'SA'", "Reserve 'SB'", "Reserve 'SC'", "Reserve 'SD'", "Reserve 'SE'", "Reserve 'SF'", "Reserve 'SG'", "Reserve 'SH'", "Reserve 'SI'", "Reserve 'SJ'", "Reserve 'SK'", "Reserve 'SL'", "Reserve 'SM'", "Reserve 'SN'", "Reserve 'SO'", "Reserve 'SP'", "Reserve 'SQ'", "Reserve 'SR'", "Reserve 'SS'", "Reserve 'ST'", "Reserve 'SU'", "Reserve 'SV'", "Reserve 'SW'", "Reserve 'SX'", "Reserve 'SY'", "Reserve 'SZ'", "Reserve 'TA'", "Reserve 'TB'", "Reserve 'TC'", "Reserve 'TD'", "Reserve 'TE'", "Reserve 'TF'", "Reserve 'TG'", "Reserve 'TH'", "Reserve 'TI'", "Reserve 'TJ'", "Reserve 'TK'", "Reserve 'TL'", "Reserve 'TM'", "Reserve 'TN'", "Reserve 'TO'", "Reserve 'TP'", "Reserve 'TQ'", "Reserve 'TR'", "Reserve 'TS'", "Reserve 'TT'", "Reserve 'TU'", "Reserve 'TV'", "Reserve 'TW'", "Reserve 'TX'", "Reserve 'TY'", "Reserve 'TZ'", "Reserve 'UA'", "Reserve 'UB'", "Reserve 'UC'", "Reserve 'UD'", "Reserve 'UE'", "Reserve 'UF'", "Reserve 'UG'", "Reserve 'UH'", "Reserve 'UI'", "Reserve 'UJ'", "Reserve 'UK'", "Reserve 'UL'", "Reserve 'UM'", "Reserve 'UN'", "Reserve 'UO'", "Reserve 'UP'", "Reserve 'UQ'", "Reserve 'UR'", "Reserve 'US'", "Reserve 'UT'", "Reserve 'UU'", "Reserve 'UV'", "Reserve 'UW'", "Reserve 'UX'", "Reserve 'UY'", "Reserve 'UZ'", "Reserve 'VA'", "Reserve 'VB'", "Reserve 'VC'", "Reserve 'VD'", "Reserve 'VE'", "Reserve 'VF'", "Reserve 'VG'", "Reserve 'VH'", "Reserve 'VI'", "Reserve 'VJ'", "Reserve 'VK'", "Reserve 'VL'", "Reserve 'VM'", "Reserve 'VN'", "Reserve 'VO'", "Reserve 'VP'", "Reserve 'VQ'", "Reserve 'VR'", "Reserve 'VS'", "Reserve 'VT'", "Reserve 'VU'", "Reserve 'VV'", "Reserve 'VW'", "Reserve 'VX'", "Reserve 'VY'", "Reserve 'VZ'", "Reserve 'WA'", "Reserve 'WB'", "Reserve 'WC'", "Reserve 'WD'", "Reserve 'WE'", "Reserve 'WF'", "Reserve 'WG'", "Reserve 'WH'", "Reserve 'WI'", "Reserve 'WJ'", "Reserve 'WK'", "Reserve 'WL'", "Reserve 'WM'", "Reserve 'WN'", "Reserve 'WO'", "Reserve 'WP'", "Reserve 'WQ'", "Reserve 'WR'", "Reserve 'WS'", "Reserve 'WT'", "Reserve 'WU'", "Reserve 'WV'", "Reserve 'WW'", "Reserve 'WX'", "Reserve 'WY'", "Reserve 'WZ'", "Reserve 'XA'", "Reserve 'XB'", "Reserve 'XC'", "Reserve 'XD'", "Reserve 'XE'", "Reserve 'XF'", "Reserve 'XG'", "Reserve 'XH'", "Reserve 'XI'", "Reserve 'XJ'", "Reserve 'XK'", "Reserve 'XL'", "Reserve 'XM'", "Reserve 'XN'", "Reserve 'XO'", "Reserve 'XP'", "Reserve 'XQ'", "Reserve 'XR'", "Reserve 'XS'", "Reserve 'XT'", "Reserve 'XU'", "Reserve 'XV'", "Reserve 'XW'", "Reserve 'XX'", "Reserve 'XY'", "Reserve 'XZ'", "Reserve 'YA'", "Reserve 'YB'", "Reserve 'YC'", "Reserve 'YD'", "Reserve 'YE'", "Reserve 'YF'", "Reserve 'YG'", "Reserve 'YH'", "Reserve 'YI'", "Reserve 'YJ'", "Reserve 'YK'", "Reserve 'YL'", "Reserve 'YM'", "Reserve 'YN'", "Reserve 'YO'", "Reserve 'YP'", "Reserve 'YQ'", "Reserve 'YR'", "Reserve 'YS'", "Reserve 'YT'", "Reserve 'YU'", "Reserve 'YV'", "Reserve 'YW'", "Reserve 'YX'", "Reserve 'YY'", "Reserve 'YZ'", "Reserve 'ZA'", "Reserve 'ZB'", "Reserve 'ZC'", "Reserve 'ZD'", "Reserve 'ZE'", "Reserve 'ZF'", "Reserve 'ZG'", "Reserve 'ZH'", "Reserve 'ZI'", "Reserve 'ZJ'", "Reserve 'ZK'", "Reserve 'ZL'", "Reserve 'ZM'", "Reserve 'ZN'", "Reserve 'ZO'", "Reserve 'ZP'", "Reserve 'ZQ'", "Reserve 'ZR'", "Reserve 'ZS'", "Reserve 'ZT'", "Reserve 'ZU'", "Reserve 'ZV'", "Reserve 'ZW'", "Reserve 'ZX'", "Reserve 'ZY'", "Reserve 'ZZ'.

In witness whereof, Vincent Romanelli, Romanelli & Hughes Building Company set his hand this 3rd day of March, 2020, for and on behalf of said Company.

Romanelli & Hughes Building Company
By: Vincent Romanelli
Owner

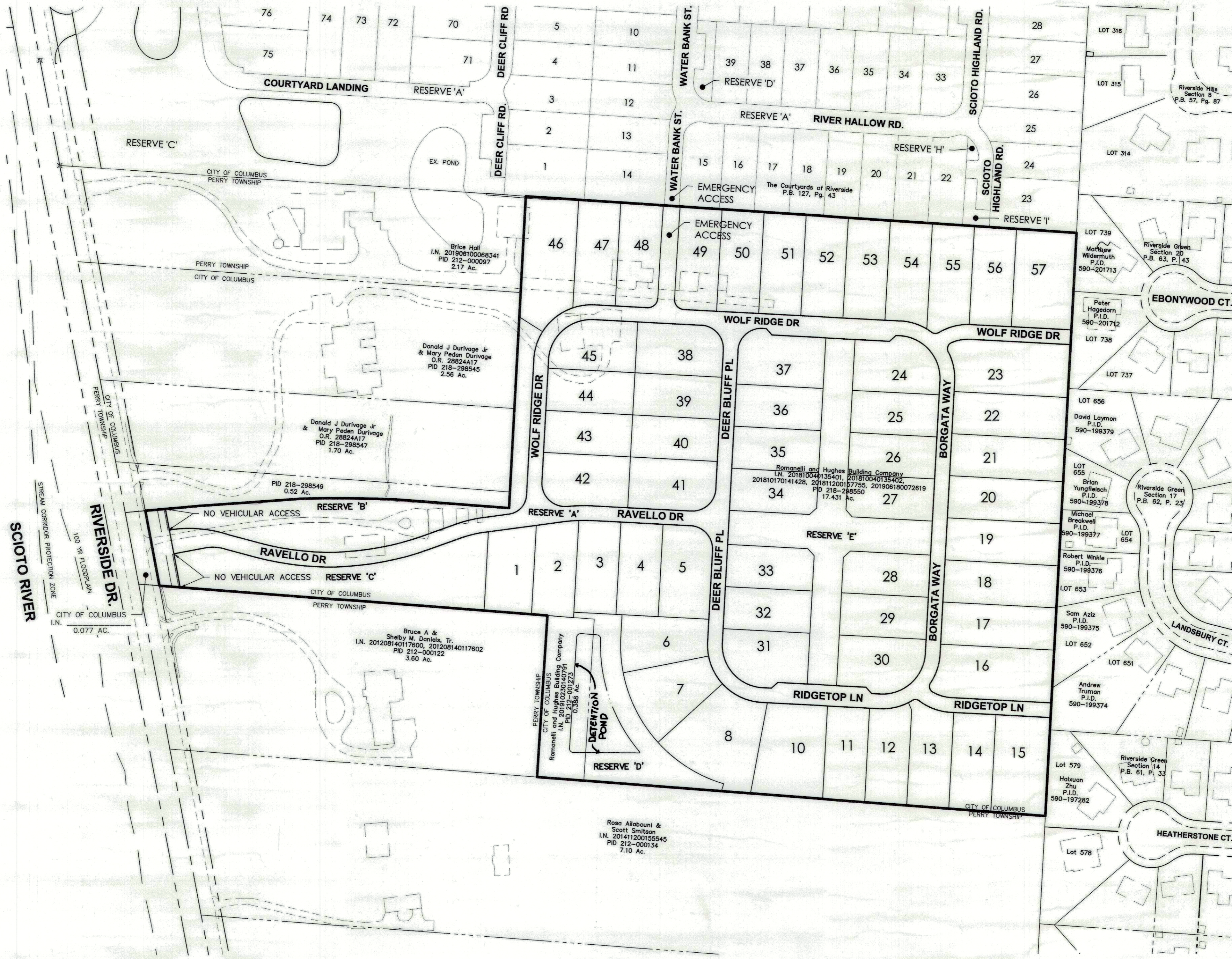
STATE OF OHIO
COUNTY OF FRANKLIN, SS:

The foregoing instrument was acknowledged before me this 3rd day of March, 2020 by Vincent Romanelli, Romanelli & Hughes Building Company, for and on behalf of said company.



KRISTINE L. LOUGHRY
NOTARY PUBLIC, STATE OF OHIO
FRANKLIN COUNTY
My Commission Expires 2/5/2022

Kristine L. Loughry
Notary Public, State of Ohio
My Commission expires _____



PLAN VIEW
SCALE: 1" = 100'

SURVEY DATA:

BASIS OF BEARINGS: Bearings are based upon the Ohio State Plane Coordinate System, NAD83 South Zone (NSRS 2007) which determines the bearing for the westerly line of Riverside Green Section 20 to be S02°58'14"E.

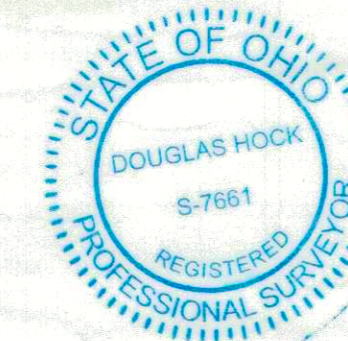
SOURCE OF DATA: The sources of recorded survey data are the records of the Franklin County, Ohio, Recorder, referenced in the plan and text of this plat.

IRON PINS, where indicated, are to be set and are iron pipes, thirteen-sixteenths inch inside diameter, thirty inches long with a plastic cap placed in the top bearing the inscription "ADVANCED". These markers shall be set following the completion of the construction/installation of the street pavement and utilities.

PERMANENT MARKERS, where indicated, are to be set and are one-inch diameter, thirty-inch long, solid iron pins, with the top end flush with the surface of the ground and then capped with an aluminum cap stamped "ADVANCED". Once installed, the top of the cap shall be marked (punched) to record the actual location of the point. These markers shall be set following the completion of the construction/installation of the street pavement and utilities.

We do hereby certify that we have surveyed the above premises, prepared the attached plat, and that said plat is correct. All dimensions are in feet and decimal parts thereof.

By [Signature]
Registered Surveyor
Date 3/2/2020



Ravello is comprised of the following Franklin County Parcel Number (s) with the following acreage being platted out of each:

Parcel Number: 218-298550
17.431 Ac. (17.431 Platted)
212-001273
0.388 Ac. (0.388 Platted)

Approved this 6th day of MARCH, 2020

Scott J. Messer
Director, Department of Building and Zoning Services, Columbus, Ohio

Approved this 6th day of March, 2020

[Signature]
City Engineer, Columbus, Ohio

Approved this 9th day of March, 2020

[Signature]
Director, Department of Public Service, Columbus, Ohio

Approved and Accepted this 9th day of March, 2020 by ordinance no. _____ wherein the final plat of RAVELLO shown hereon as well as the dedicated right of way, in fee, as shown hereon are accepted as such by the City of Columbus, Ohio.

In witness thereof, I have herunto set my hand and affixed my seal this 9th day of March, 2020.

City Clerk, Columbus, Ohio

Transferred this ___ day of ___, 2020

Auditor, Franklin County, Ohio

Filed for record this ___ day of ___, 2020 at ___ .M.

Recorder, Franklin County, Ohio

Fee \$ ___ File No. ___

Recorded this ___ day of ___, 2020

Deputy Recorder, Franklin County, Ohio

Plat Book ___ Page(s) ___

CITY OF COLUMBUS, OHIO
FINAL PLAT
FOR
RAVELLO



SCALE: As Noted SHEET 1 / 2
DATE: FEBRUARY 27, 2020 JOB NO.: 17-0027-149