

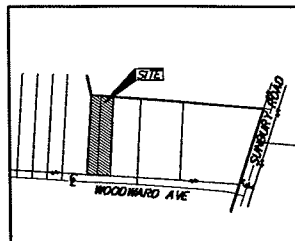


ENGINEERS, SURVEYORS, PLANNERS, SCIENTISTS
 EVANS, MECHWART HAMBLETON & TILTON, INC.
 170 MILL STREET, GAHANNA, OHIO 43230-3036
 TEL: 614-471-5150 • FAX: 614-471-9286

ANNEXATION PLAT
 LOCATED IN
 QUARTER TOWNSHIP 3, TOWNSHIP 1, RANGE 17
 UNITED STATES MILITARY LANDS
 TOWNSHIP MIFFLIN, FRANKLIN COUNTY, OHIO

SCALE 1" = 100'

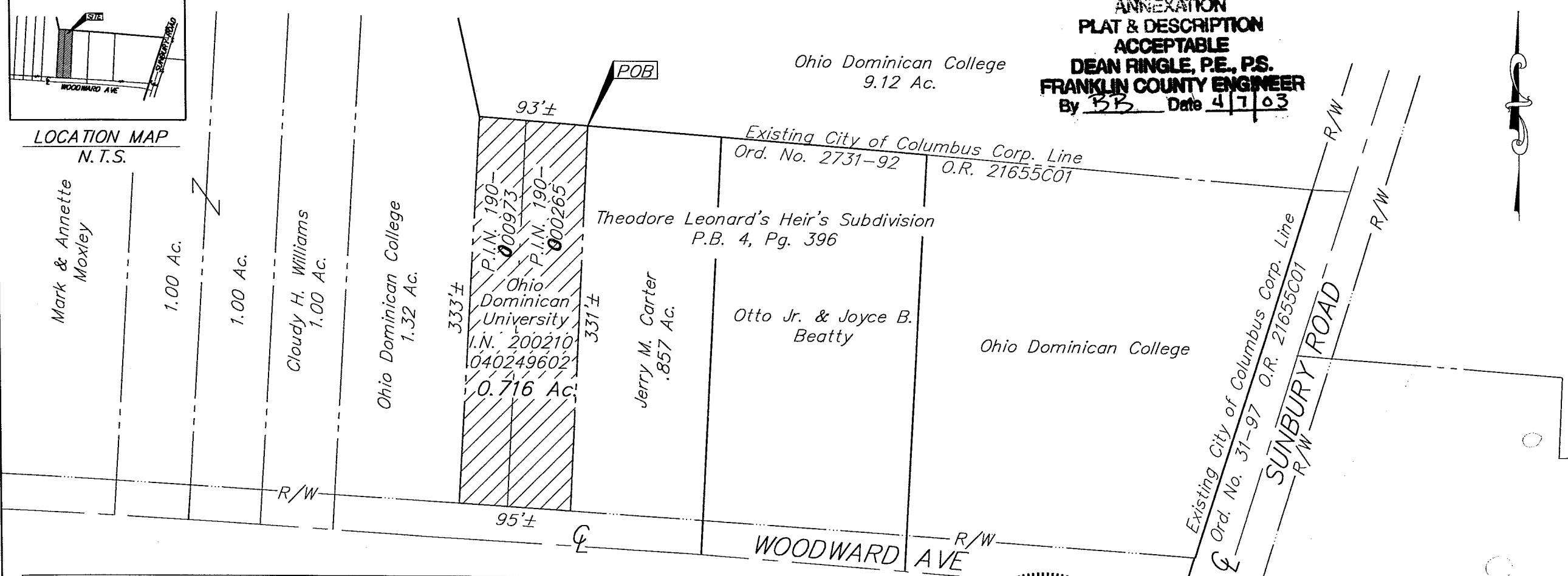
MARCH 28, 2003



LOCATION MAP
 N.T.S.

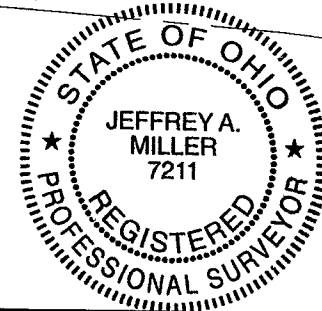
ANNEXATION
 PLAT & DESCRIPTION
 ACCEPTABLE
 DEAN RINGLE, P.E., P.S.
 FRANKLIN COUNTY ENGINEER
 By BB Date 4/7/03

G:\PROJECT\2003\04\44\DWG\30444A.DWG - O.XREFS: - PLOTTED BY JMACLEAN - March 28, 2003 - 12:44 PM



ANNEX NO. _____ ORD NO. _____
 PROPOSED ANNEXATION OF 0.716± ACRES
 TO THE
 CITY OF COLUMBUS
 FROM
 MIFFLIN TOWNSHIP, FRANKLIN COUNTY, OHIO
 DATE MARCH 2003 SCALE 1" = 100

EXISTING CITY OF COLUMBUS CORP. LINE
 PROPOSED CITY OF COLUMBUS CORP. LINE
 AREA TO BE ANNEXED



EMH&T INC.
 By Jeff A Miller 44.03
 Professional Surveyor No. 7211