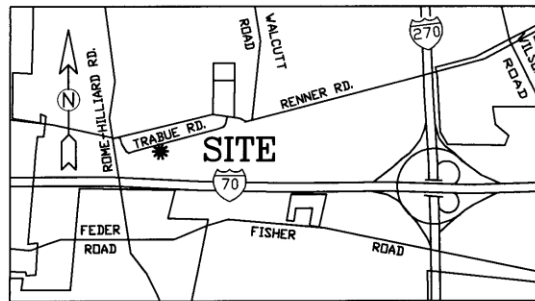


ANNEXATION AN08-013
1.55+ acres in Prairie Township
Kevin and Jocelyn Mullins

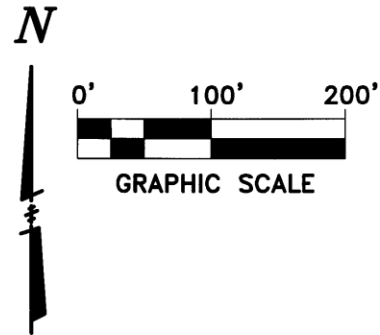
SITE ENGINEERING, INC.

7453 EAST MAIN STREET
REYNOLDSBURG, OHIO 43068
PHONE: (614) 759-9900

FILE #3433
DATE: APR 08
SCALE: 1"=100'



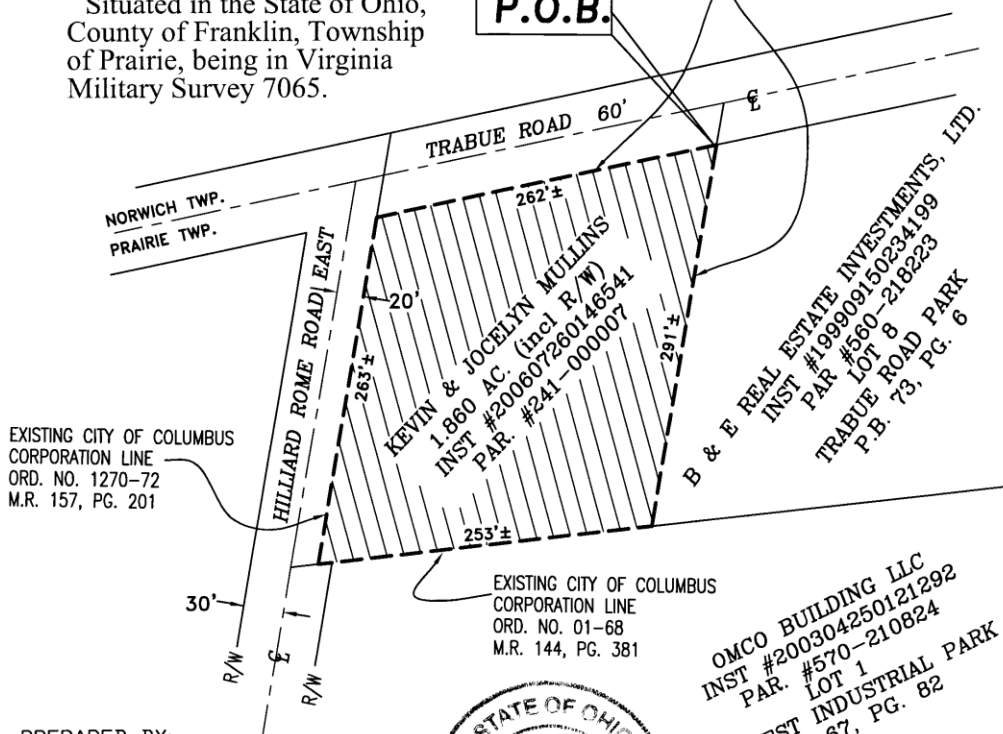
LOCATION MAP
NO SCALE



Situated in the State of Ohio,
County of Franklin, Township
of Prairie, being in Virginia
Military Survey 7065.

P.O.B.

EXISTING CITY OF COLUMBUS
CORPORATION LINE
ORD. NO. 1896-85
O.R. 6483 D04



PREPARED BY:

Mark A. Hazel, P.S. 5-14-08
Professional Surveyor #7039



LEGEND

EXISTING CITY OF COLUMBUS CORP. LINE

PROPOSED CITY OF COLUMBUS CORP. LINE

AREA TO
BE ANNEXED



OMCO BUILDING LLC
INST #200304250121292
PAR. #570-210824
LOT 1
COL-WEST INDUSTRIAL PARK
P.B. 67, PG. 82