

2.9± Ac. Tract:
 Length of Contiguity: ±1425.5 feet
 Total Length of Perimeter: ±1645 feet
 Percentage of Contiguity: ±87%

4.8± Ac. Tract:
 Length of Contiguity: ±1884.8 feet
 Total Length of Perimeter: ±1884.8 feet
 Percentage of Contiguity: ±100%

No islands of township property are created by this annexation.

Legend



Area to be Annexed

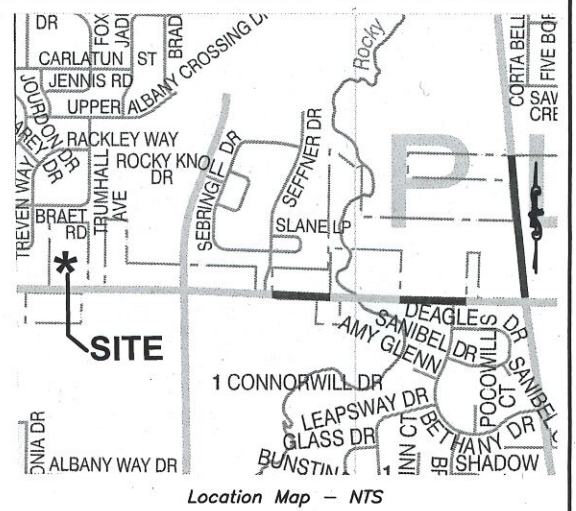
Existing City of Columbus Corp Line

Proposed City of Columbus Corp Line

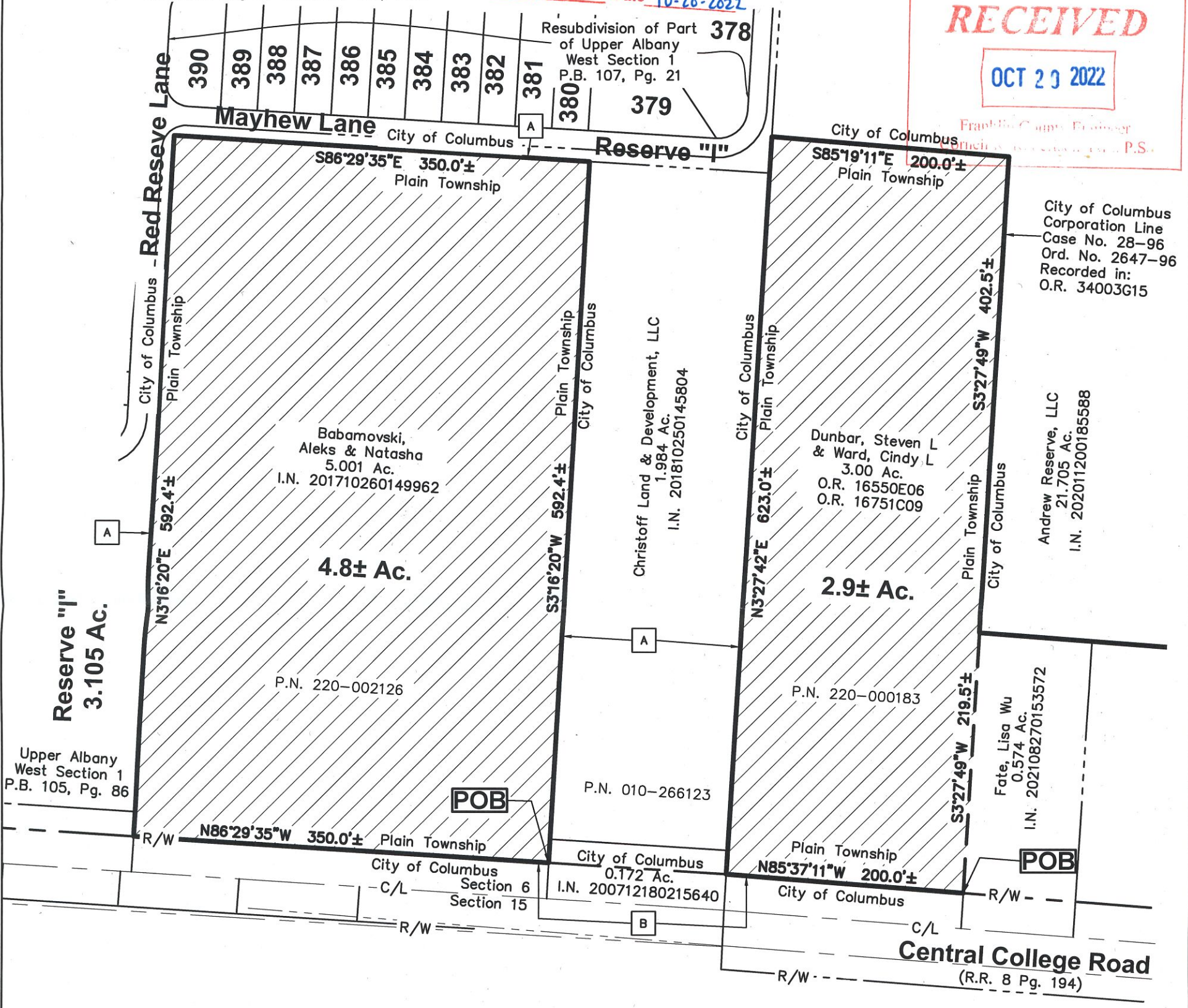
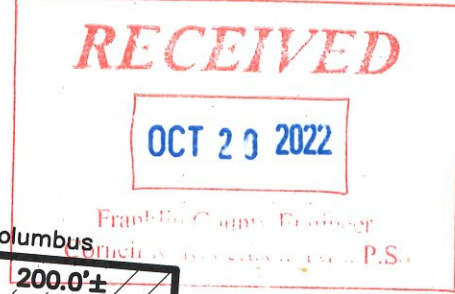
**4.8± & 2.9± ACRE
 ANNEXATION FROM THE
 TOWNSHIP OF PLAIN
 TO THE CITY OF COLUMBUS**
 Section 6, Township 2, Range 16
 United States Military Survey
 Plain Township
 Franklin County, Ohio

**ANNEXATION
 PLAT & DESCRIPTION
 ACCEPTABLE**
 CORNELL R. ROBERTSON, P.E., P.S.
 FRANKLIN COUNTY ENGINEER

By JDH/GMA Date 10-20-2022



Location Map - NTS



City of Columbus
 Corporation Line
 Case No. 28-96
 Ord. No. 2647-96
 Recorded in:
 O.R. 34003G15

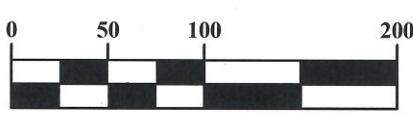
Andrew Reserve, LLC
 21.705 Ac.
 I.N. 202011200185588

Fate, Lisa Wu
 0.574 Ac.
 I.N. 202108270153572

A City of Columbus
 Corporation Line
 Case No. 23-02
 Ord. No. 1880-02
 Recorded in:
 I.N. 200303200030585

B City of Columbus
 Corporation Line
 Case No. 48-03
 Ord. No. 0006-2004
 Recorded in:
 I.N. 200403110053675

GRAPHIC SCALE



1 inch = 100 feet

This exhibit is created from information obtained from the Franklin County Auditor's Office and the Franklin County Recorder's Office. This exhibit is not to be used for the transfer of land.



[Signature] 10/18/22
 Douglas R. Hock, P.S. 7661 Date:

Advanced Civil Design, Inc
 781 Science Boulevard, Suite 100
 Gahanna, OH 43230
 Phone 614-428-7750
 Job No.: 22-0022-768
 Date: 10/18/2022