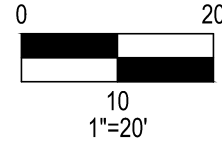
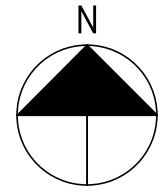


UNITED STATES MILITARY LANDS
 LOT 15, 1/4 TOWNSHIP 3, TOWNSHIP 3, RANGE 19
 CONCORD TOWNSHIP, DELAWARE COUNTY, STATE OF OHIO

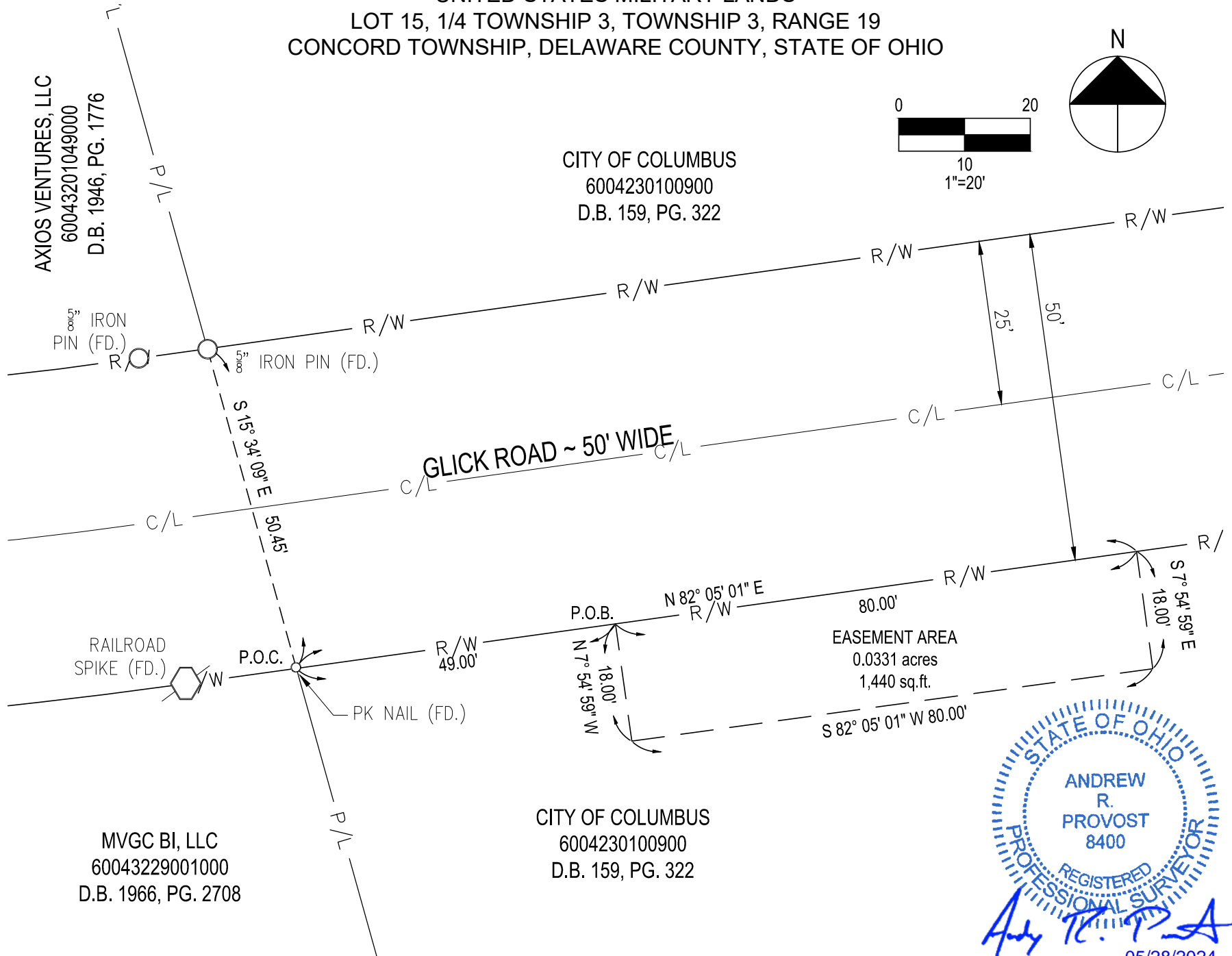


Referenced Drawing: -
 ADD / PR / ASI / BUL / RFI #: -
 Sketch #: -
 Date: MAY 2024

O'SHAUGNESSY DAM
 GLICK ROAD
 POWELL, OH 43065

AXIOS VENTURES, LLC
 60043201049000
 D.B. 1946, PG. 1776

CITY OF COLUMBUS
 6004230100900
 D.B. 159, PG. 322



MVGC BI, LLC
 60043229001000
 D.B. 1966, PG. 2708

CITY OF COLUMBUS
 6004230100900
 D.B. 159, PG. 322

STATE OF OHIO
 ANDREW R. PROVOST
 8400
 REGISTERED PROFESSIONAL SURVEYOR
Andy R. Provost
 05/28/2024

GPD GROUP
 Survey, Platting, Mapping & Engineering, Inc.
 520 South Main Street, Suite 2531
 Akron, OH 44311
 330.572.2100
 Copyright © 2024, GPD Group, Inc. All Rights Reserved.

