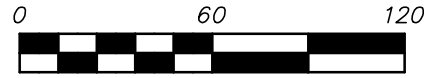


# EASEMENT PLAT

Being a 12 foot wide easement, 0.094 Acres,  
located in part of Farm Lot 17, Sec. 4, Twp. 3, Range 18,  
United States Militarys Lands  
City of Columbus, Delaware County, Ohio

For: Delco Water Co.



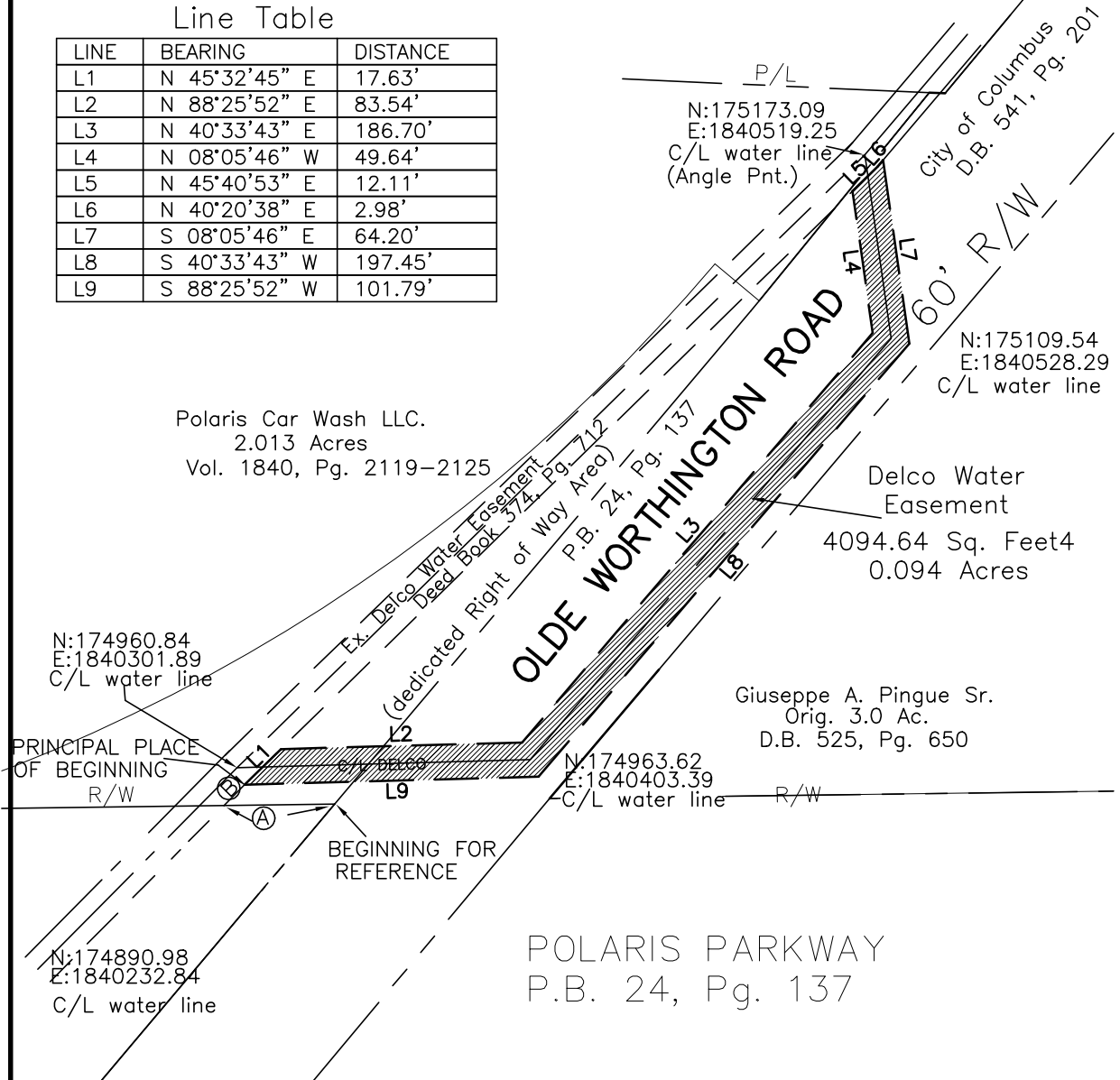
Scale 1" = 60'  
Sept. 2021

BEGINNING FOR  
REFERENCE LINE TABLE  
 (A) S 89°14'07" W 38.32'  
 (B) N 44°39'57" E 10.11'

Basis of bearings from (Ohio SPC  
north zone grid) NAD 83,  
Coordinates furnished by Delco  
Water as shown on this Plat.  
Coordinates shown are on the  
centerline of existing water line.

Line Table

LINE	BEARING	DISTANCE
L1	N 45°32'45" E	17.63'
L2	N 88°25'52" E	83.54'
L3	N 40°33'43" E	186.70'
L4	N 08°05'46" W	49.64'
L5	N 45°40'53" E	12.11'
L6	N 40°20'38" E	2.98'
L7	S 08°05'46" E	64.20'
L8	S 40°33'43" W	197.45'
L9	S 88°25'52" W	101.79'

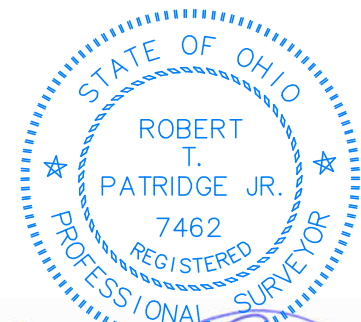


Polaris Car Wash LLC.  
2.013 Acres  
Vol. 1840, Pg. 2119-2125

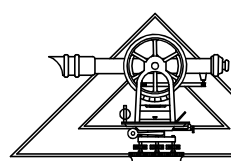
Delco Water Easement  
4094.64 Sq. Feet  
0.094 Acres

Giuseppe A. Pingue Sr.  
Orig. 3.0 Ac.  
D.B. 525, Pg. 650

POLARIS PARKWAY  
P.B. 24, Pg. 137



*Robert T. Patridge Jr.*



PATRIDGE  
SURVEYING L.L.C.  
9464 DUBLIN ROAD  
POWELL, OHIO 43065  
TEL. (614)-799-0031  
FAX (614)-300-5076

Robert T. Patridge Jr.  
Professional Surveyor No. 7462