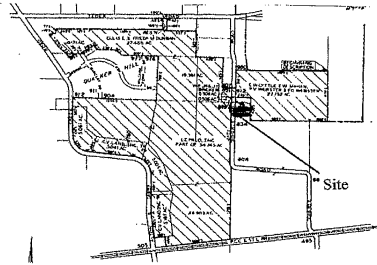


ANNEXATION AN11-011

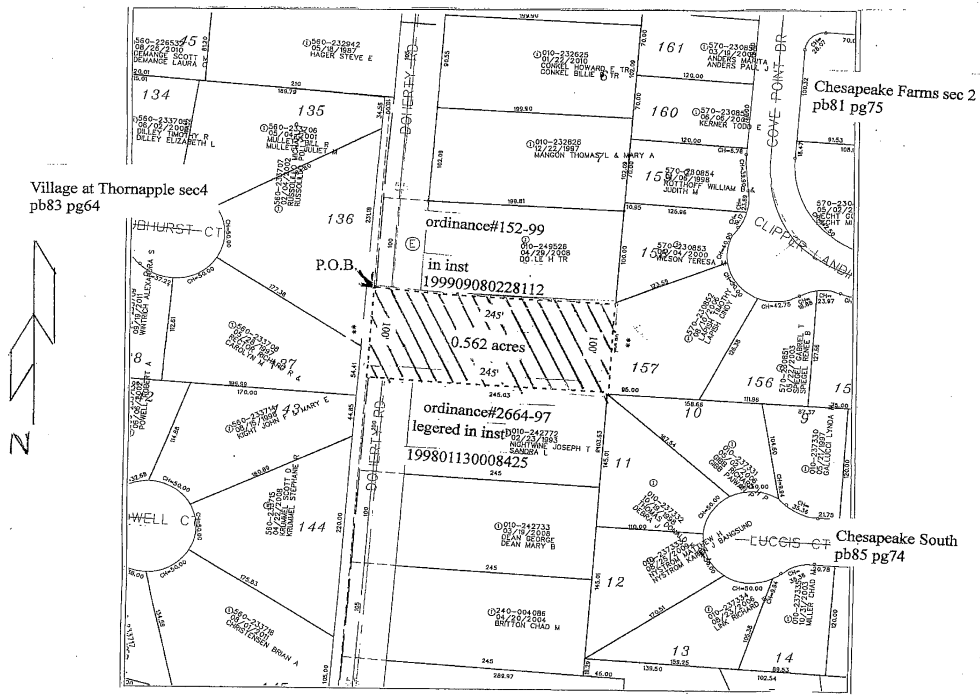
± .562 Acres in Prairie Township

842 Doherty Road



Proposed 0.562 acre annexation
 From Prairie twp to the city of Columbus
 situate in v.m.s. No7326, Prairie, twp, Franklin county Ohio.

ANNEXATION
 PLAT & DESCRIPTION
 ACCEPTABLE
 DEAN C. RINGLE, P.E., P.S.
 FRANKLIN COUNTY ENGINEER
 By BB Date 10/31/11

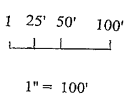


LEGEND

EXISTING CITY OF COLUMBUS CORP. LINE

Ordinance #830-79 and recorded in Misc.Rec.174, Page 439

AREA TO BE ANNEXED



RECEIVED

OCT 31 2011

Franklin County Engineer
 Dean C. Ringle, P.E., P.S.

