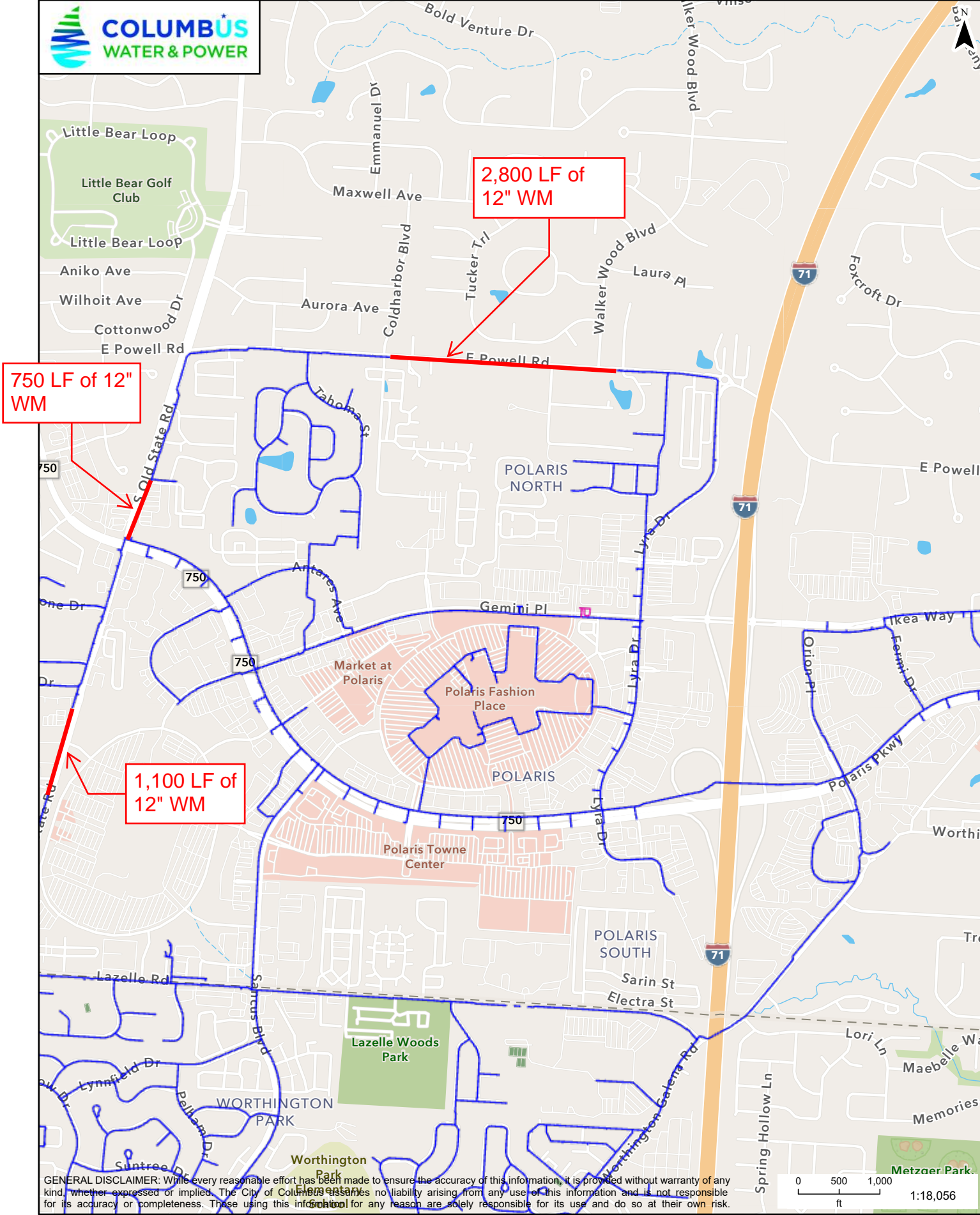


4,650 LF TOTAL

Columbus Water & Power

8/25/2025

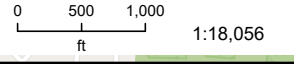


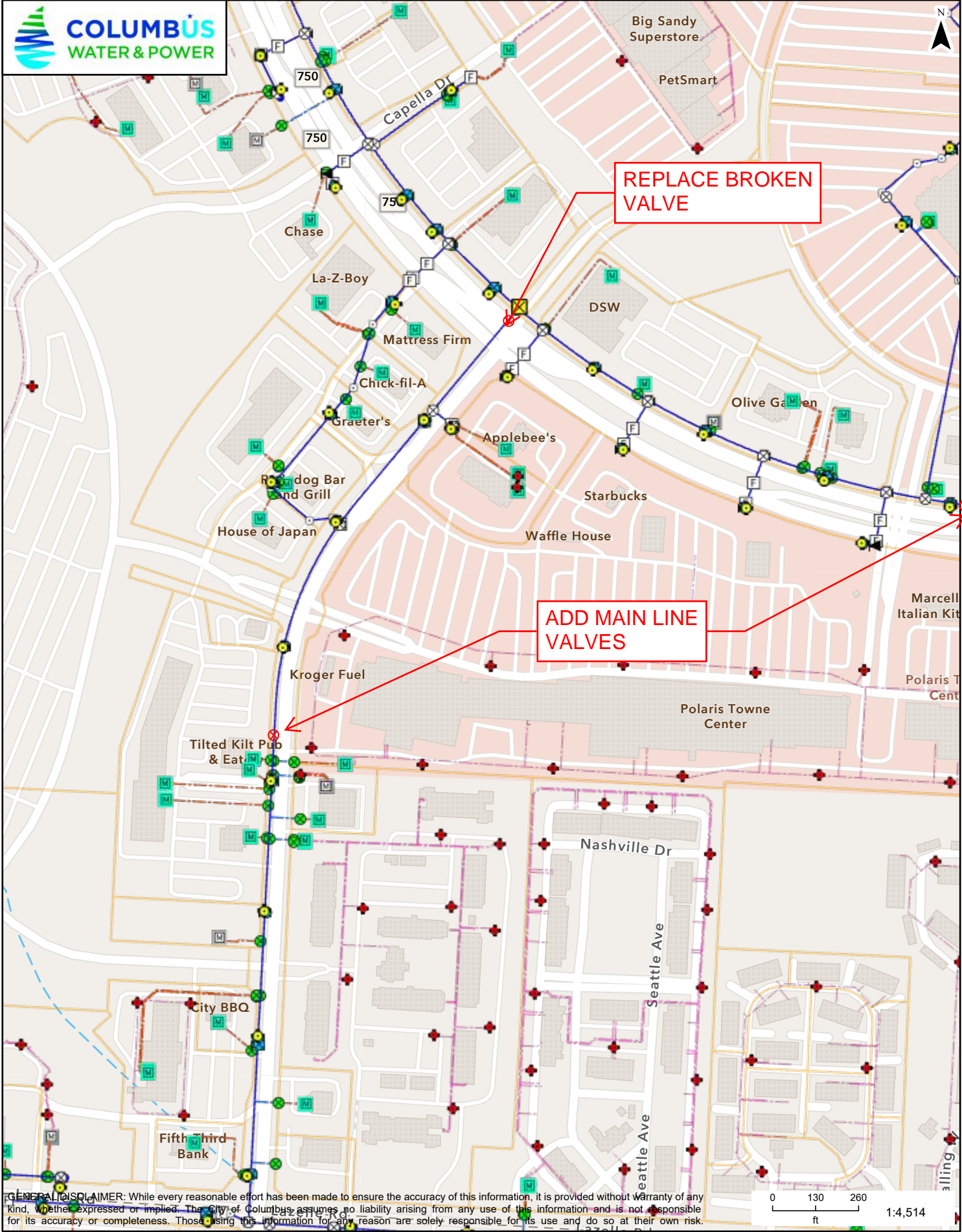
2,800 LF of 12" WM

750 LF of 12" WM

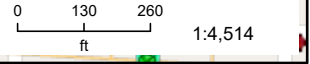
1,100 LF of 12" WM

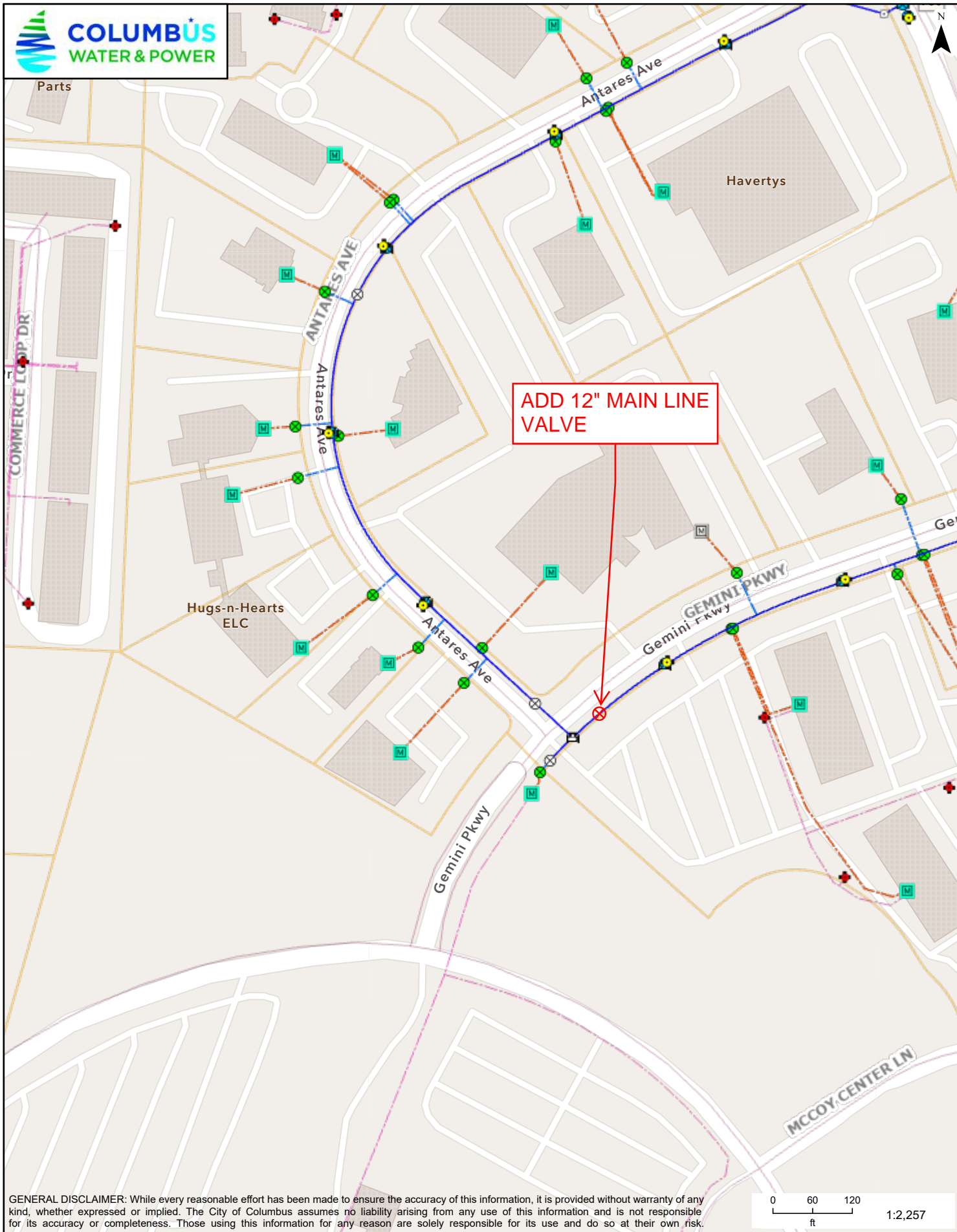
GENERAL DISCLAIMER: While every reasonable effort has been made to ensure the accuracy of this information, it is provided without warranty of any kind, whether expressed or implied. The City of Columbus assumes no liability arising from any use of this information and is not responsible for its accuracy or completeness. Those using this information for any reason are solely responsible for its use and do so at their own risk.





GENERAL DISCLAIMER: While every reasonable effort has been made to ensure the accuracy of this information, it is provided without warranty of any kind, whether expressed or implied. The City of Columbus assumes no liability arising from any use of this information and is not responsible for its accuracy or completeness. Those using this information for any reason are solely responsible for its use and do so at their own risk.

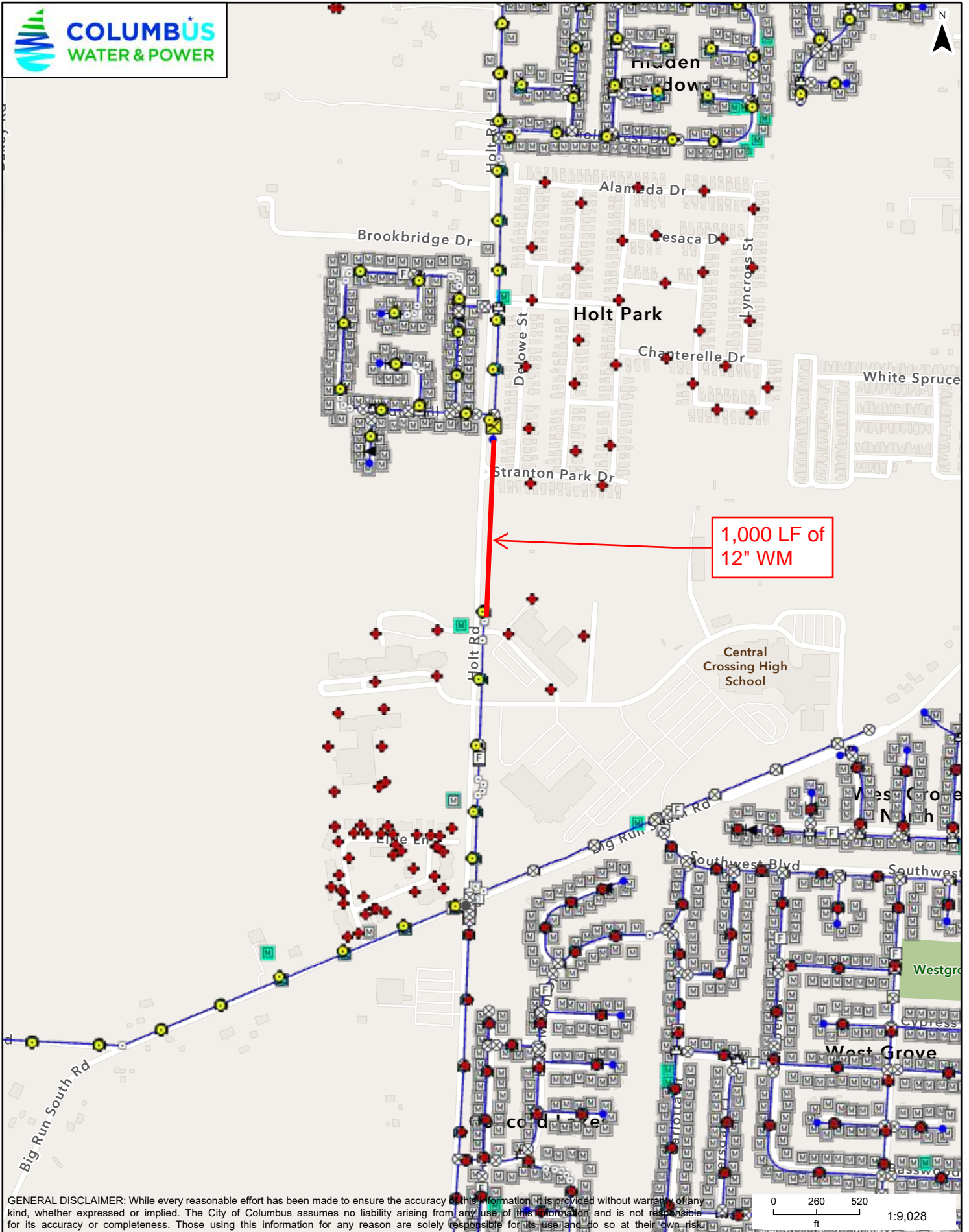




1,000 LF TOTAL

Columbus Water & Power

10/8/2025



1,000 LF of 12" WM

GENERAL DISCLAIMER: While every reasonable effort has been made to ensure the accuracy of this information, it is provided without warranty of any kind, whether expressed or implied. The City of Columbus assumes no liability arising from any use of this information and is not responsible for its accuracy or completeness. Those using this information for any reason are solely responsible for its use and do so at their own risk.

