



Evans, Mechwart, Hambleton & Tilton, Inc.
 Engineers • Surveyors • Planners • Scientists
 5500 New Albany Road, Columbus, OH 43054
 Phone: 614.775.4329 fax: 614.775.3648
 emht.com

ELECTRIC EASEMENT

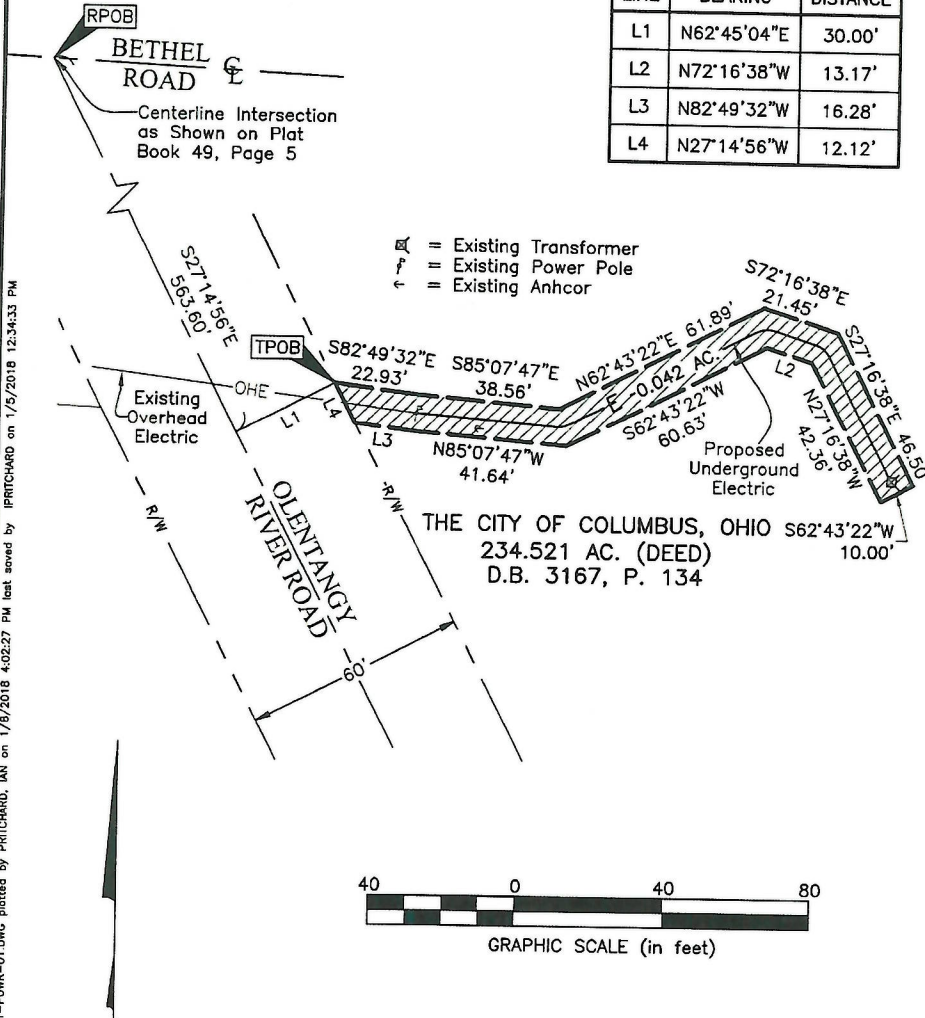
QUARTER TOWNSHIP 2, TOWNSHIP 1, RANGE 18
 UNITED STATES MILITARY DISTRICT
 CITY OF COLUMBUS, COUNTY OF FRANKLIN, STATE OF OHIO

Date: January 8, 2018

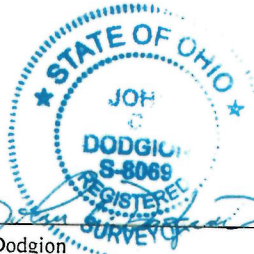
Job No: 2016-1082

Scale: 1" = 40'

LINE TABLE		
LINE	BEARING	DISTANCE
L1	N62°45'04"E	30.00'
L2	N72°16'38"W	13.17'
L3	N82°49'32"W	16.28'
L4	N27°14'56"W	12.12'



Existing Utilities shown are based on the Bethel Road Booster Station Improvement Plan prepared by Burgess and Niple for CIP 690473-100001.



By John C. Dodgion
 Professional Surveyor No. 8069

Date 01/09/2018

J:\2016\1082\DWG\04SHEETS\EASEMENTS\20161082-VS-ESMT-POWER-01.DWG plotted by PRITCHARD, IAN on 1/8/2018 4:02:27 PM last saved by PRITCHARD, IAN on 1/5/2018 12:34:33 PM Xref:

**ELECTRIC EASEMENT
0.042 ACRE**

Situated in the State of Ohio, County of Franklin, City of Columbus, Quarter Township 2, Township 1, Range 18, United States Military District and being on, over and across that 234.521 acre tract conveyed to The City of Columbus, Ohio by deed of record in Deed Book 3167, Page 134 (all references are to the records of the Recorder's Office, Franklin County, Ohio) and being more particularly described as follows:

Beginning, for reference, at the intersection of the centerline of Bethel Road and the centerline of Olentangy River Road, as shown on Plat Book 49, Page 5;

thence South 27° 14' 56" East, with said centerline of Olentangy River Road, a distance of 563.60 feet to a point;

thence North 62° 45' 04" East, across said Olentangy River Road, a distance of 30.00 feet to a point in the easterly right-of-way line of Olentangy River Road, the TRUE POINT OF BEGINNING;

thence across said 234.521 acre tract, the following courses and distances:

South 82° 49' 32" East, a distance of 22.93 feet to a point;

South 85° 07' 47" East, a distance of 38.56 feet to a point;

North 62° 43' 22" East, a distance of 61.89 feet to a point;

South 72° 16' 38" East, a distance of 21.45 feet to a point;

South 27° 16' 38" East, a distance of 46.50 feet to a point;

South 62° 43' 22" West, a distance of 10.00 feet to a point;

North 27° 16' 38" West, a distance of 42.36 feet to a point;

North 72° 16' 38" West, a distance of 13.17 feet to a point;

South 62° 43' 22" West, a distance of 60.63 feet to a point;

North 85° 07' 47" West, a distance of 41.64 feet to a point; and

North 82° 49' 32" West, a distance of 16.28 feet to a point in said easterly right-of-way line;

thence North 27° 14' 56" West, with said easterly right-of-way line, a distance of 12.12 feet to the TRUE POINT OF BEGINNING, containing 0.042 acre of land, more or less.

EVANS, MECHWART, HAMBLETON & TILTON, INC.

John C. Dodgion
Professional Surveyor No. 8069



01/09/2018

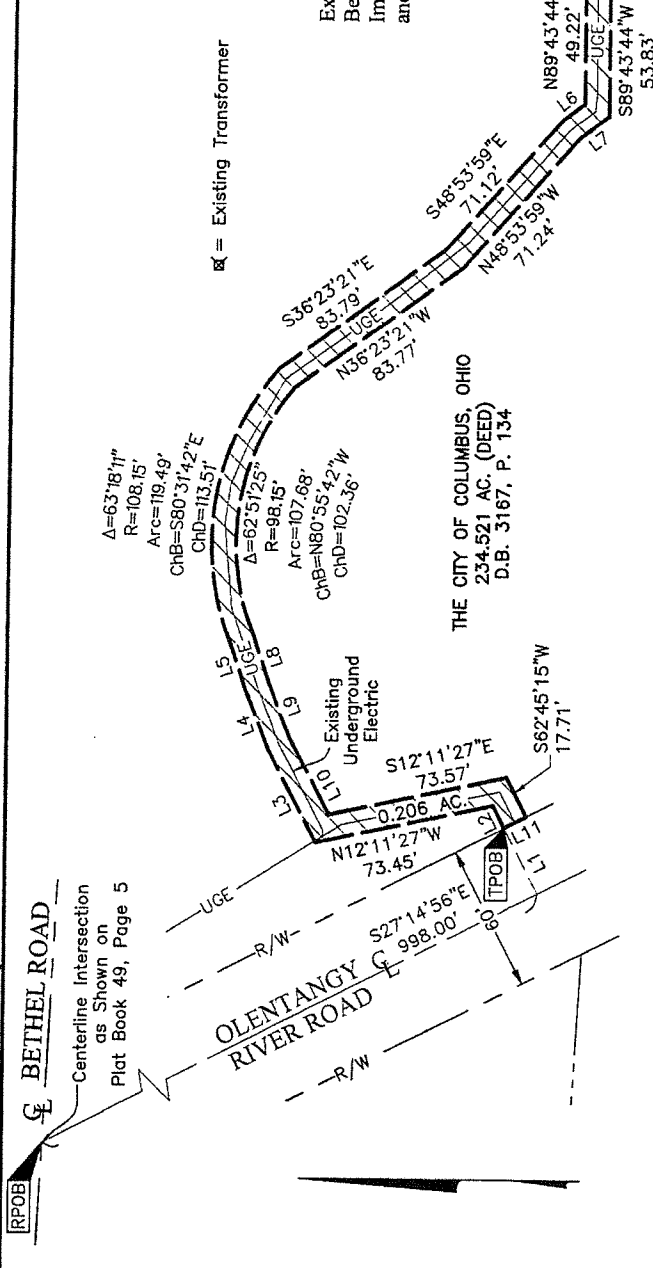
Date

EMHT
 Evans, Mechwart, Hambleton & Tilton, Inc.
 Engineers • Surveyors • Planners • Scientists
 5500 New Albany Road, Columbus, OH 43254
 Phone: 614.775.4500 Toll Free: 888.775.3448
 emht.com

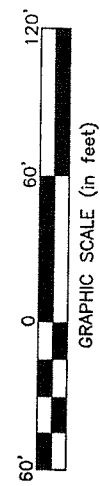
ELECTRIC EASEMENT
 QUARTER TOWNSHIP 2, TOWNSHIP 1, RANGE 18
 UNITED STATES MILITARY DISTRICT
 CITY OF COLUMBUS, COUNTY OF FRANKLIN, STATE OF OHIO

Date: January 8, 2018
 Scale: 1" = 60'
 Job No: 2016-1082

Sheet 1 of 2



Existing Utilities shown are based on the
 Bethel Road Booster Station
 Improvement Plan prepared by Burgess
 and Niple for CIP 690473-100001.

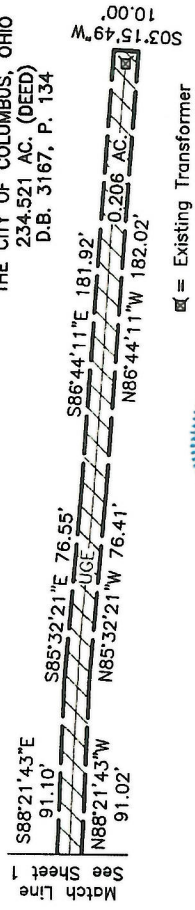


EMH&T
 Evans, Mechwart, Hambleton & Tilton, Inc.
 Engineers • Surveyors • Planners • Scientists
 5500 New Albany Road, Columbus, OH 43054
 Phone: 614.733.6500 Fax: 614.733.3648
 emht.com

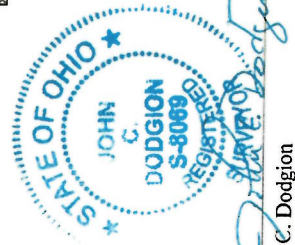
ELECTRIC EASEMENT
QUARTER TOWNSHIP 2, TOWNSHIP 1, RANGE 18
UNITED STATES MILITARY DISTRICT
CITY OF COLUMBUS, COUNTY OF FRANKLIN, STATE OF OHIO

Date: January 8, 2018
 Scale: 1" = 60'
 Job No: 2016-1082

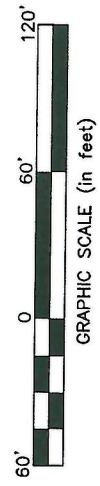
Sheet 2 of 2



LINE	BEARING	DISTANCE
L1	N62°45'04"E	30.00'
L2	N62°45'15"E	10.05'
L3	N61°51'58"E	43.02'
L4	N68°48'06"E	26.04'
L5	N71°22'52"E	20.71'
L6	S37°39'46"E	10.66'
L7	N37°39'46"W	14.62'
L8	S71°22'52"W	20.81'
L9	S68°48'06"W	25.21'
L10	S61°51'58"W	34.88'
L11	N27°14'56"W	10.00'



By: *John C. Dodgion*
 John C. Dodgion
 Professional Surveyor No. 8069
 Date: 01/08/2018



ELECTRIC EASEMENT
0.206 ACRE

Situated in the State of Ohio, County of Franklin, City of Columbus, Quarter Township 2, Township 1, Range 18, United States Military District and being on, over and across that 234.521 acre tract conveyed to the City of Columbus, Ohio by deed of record in Deed Book 3167, Page 134 (all references are to the records of the Recorder's Office, Franklin County, Ohio) and being more particularly described as follows:

Beginning, for reference, at the intersection of the centerline of Bethel Road and the centerline of Olentangy River Road, as shown on Plat Book 49, Page 5;

thence South 27° 14' 56" East, with said centerline of Olentangy River Road, a distance of 998.00 feet to a point;

thence North 62° 45' 04" East, across said Olentangy River Road, a distance of 30.00 feet to a point in the easterly right-of-way line of said Olentangy River Road, the TRUE POINT OF BEGINNING;

thence across said 234.521 acre tract, the following courses and distances:

North 62° 45' 15" East, a distance of 10.05 feet to a point;

North 12° 11' 27" West, a distance of 73.45 feet to a point;

North 61° 51' 58" East, a distance of 43.02 feet to a point;

North 68° 48' 06" East, a distance of 26.04 feet to a point;

North 71° 22' 52" East, a distance of 20.71 feet to a point;

with the arc of a curve to the right, having a central angle of 63° 18' 11", a radius of 108.15 feet, an arc length of 119.49 feet, a chord bearing of South 80° 31' 42" East and chord distance of 113.51 feet to a point;

South 36° 23' 21" East, a distance of 83.79 feet to a point;

South 48° 53' 59" East, a distance of 71.12 feet to a point;

South 37° 39' 46" East, a distance of 10.66 feet to a point;

North 89° 43' 44" East, a distance of 49.22 feet to a point;

South 86° 23' 27" East, a distance of 42.45 feet to a point;

South 88° 21' 43" East, a distance of 91.10 feet to a point;

South 85° 32' 21" East, a distance of 76.55 feet to a point;

South 86° 44' 11" East, a distance of 181.92 feet to a point;

South 03° 15' 49" West, a distance of 10.00 feet to a point;

North 86° 44' 11" West, a distance of 182.02 feet to a point;

North 85° 32' 21" West, a distance of 76.41 feet to a point;

North 88° 21' 43" West, a distance of 91.02 feet to a point;

North 86° 23' 27" West, a distance of 42.28 feet to a point;

South 89° 43' 44" West, a distance of 53.83 feet to a point;

North 37° 39' 46" West, a distance of 14.62 feet to a point;

North 48° 53' 59" West, a distance of 71.24 feet to a point;

**ELECTRIC EASEMENT
0.206 ACRE**

-2-

North 36° 23' 21" West, a distance of 83.77 feet to a point;

with the arc of a curve to the left, having a central angle of 62° 51' 25", a radius of 98.15 feet, an arc length of 107.68 feet, a chord bearing of North 80° 55' 42" West and chord distance of 102.36 feet to a point;

South 71° 22' 52" West, a distance of 20.81 feet to a point;

South 68° 48' 06" West, a distance of 25.21 feet to a point;

South 61° 51' 58" West, a distance of 34.88 feet to a point;

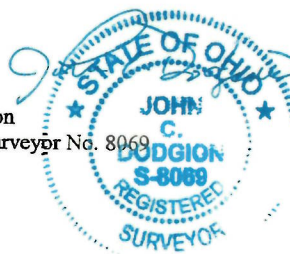
South 12° 11' 27" East, a distance of 73.57 feet to a point; and

South 62° 45' 15" West, a distance of 17.71 feet to a point in said easterly right-of-way line;

Thence North 27° 14' 56" West, with said easterly right-of-way line, a distance of 10.00 feet to the TRUE POINT OF BEGINNING, containing 0.206 acre, more or less.

EVANS, MECHWART, HAMBLETON & TILTON, INC.

John C. Dodgion
Professional Surveyor No. 8069



02/20/18

Date