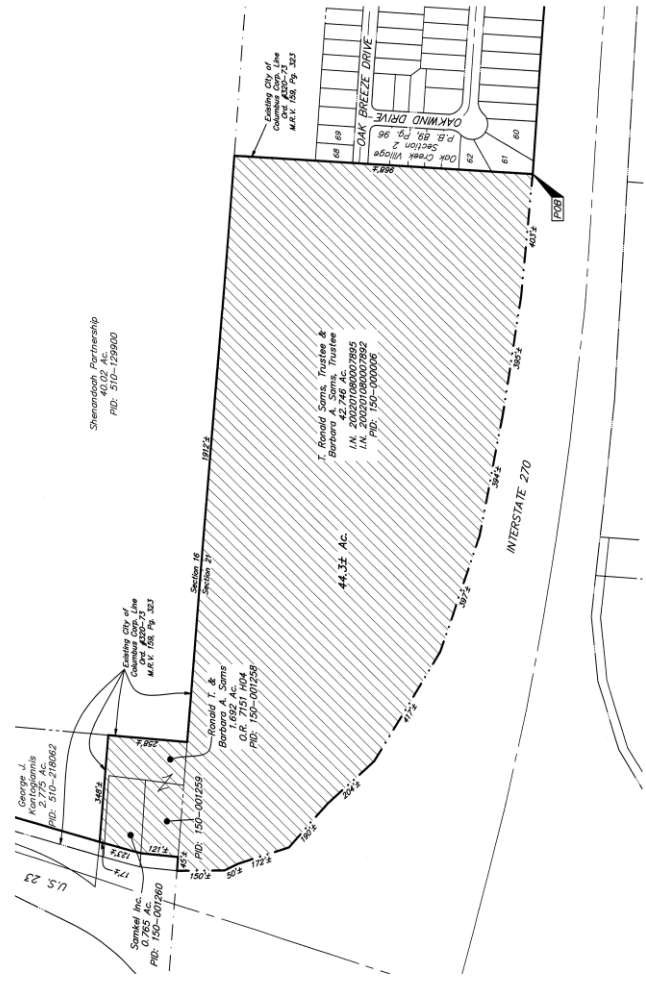


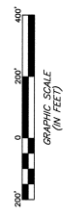
MAP ANNEXATION AN05-021 44.3 Acres in Hamilton Township T. Ronald Sams Trustee, et al.

**PROPOSED ANNEXATION OF 44.3± ACRES
FROM TOWNSHIP OF HAMILTON TO CITY OF COLUMBUS
SECTIONS 16 & 21, TOWNSHIP 4, RANGE 22
CONGRESS LANDS
TOWNSHIP OF HAMILTON, FRANKLIN COUNTY, OHIO**



Contiguity Note:
The total perimeter of the annexation area is 7020 feet, of which 3489 feet is contiguous with the City of Columbus. Parcel Number 300-725, being 50% perimeter contiguous.

EXISTING CITY OF COLUMBUS CORP. LINE
PROPOSED CITY OF COLUMBUS CORP. LINE
AREA TO BE ANNEXED



By: *T. Ronald Sams*
Professional Surveyor No. 7840



EMHT		Date: August 4, 2005
Engineers - Surveyors - Planners - Scientists		Scale: 1" = 200'
1000 North High Street, Columbus, Ohio 43260		AP No.: 2005-1580
Phone: 614-291-8888 Fax: 614-291-8888		Sheet: 1 of 1
M C S X V		REVISIONS
NAME DATE DESCRIPTION		
TIME PLotted		ANNEXATION CITY OF COLUMBUS

[C:\M04711\525\F17\PROJECT\10051580\151580A\040444\LANDSCAPE - NO METERS - LAST SAVED BY TMR88 (8/13/2005 8:42:56 AM) - PLOTTED BY TMR88 (8/14/2005 1:20:31 PM)]