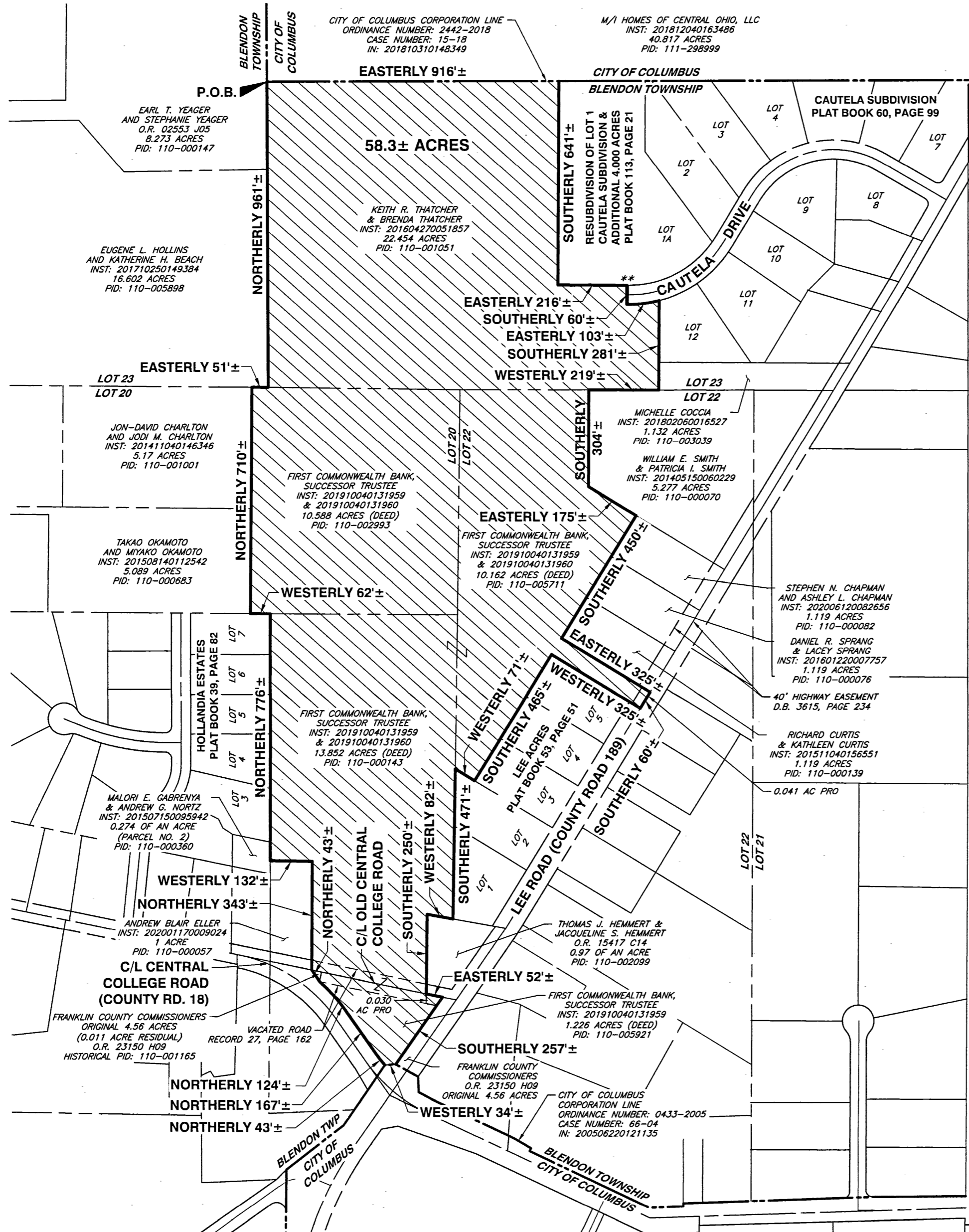
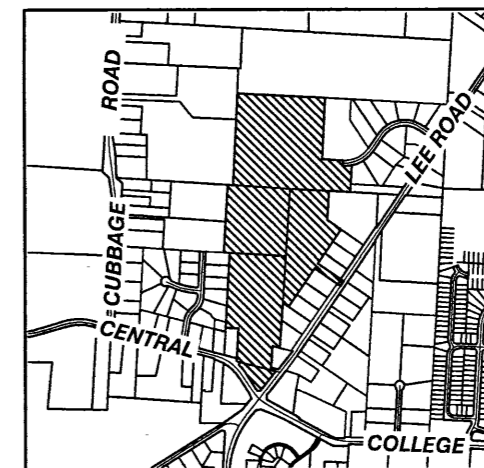


PROPOSED ANNEXATION OF 58.3 ± ACRES TO THE CITY OF COLUMBUS FROM BLENDON TOWNSHIP, FRANKLIN COUNTY, OHIO

STATE OF OHIO, COUNTY OF FRANKLIN, TOWNSHIP OF BLENDON,
 LOTS 20, 22 AND 23, QUARTER TOWNSHIP 1, TOWNSHIP 2, RANGE 17,
 UNITED STATES MILITARY LANDS.



RECEIVED
 SEP 10 2020
 Franklin County Engineer
 Cornell R. Robertson, P.E., P.S.



VICINITY MAP
 SCALE: 1" = 2000'

ANNEXATION
 PLAT & DESCRIPTION
 ACCEPTABLE
 CORNELL R. ROBERTSON, P.E., P.S.
 FRANKLIN COUNTY ENGINEER
 By FA Date 9/10/2020

950 LINEAL FEET OF PERIMETER IS CONTIGUOUS WITH THE EX. CORPORATION LINE OF THE CITY OF COLUMBUS.

A TOTAL OF 9,187 LINEAL FEET OF ANNEXED PERIMETER.

10.3% OF THE PERIMETER OF THE ANNEXED AREA IS CONTIGUOUS TO THE EX. CITY OF COLUMBUS CORPORATION LINE.

PROPERTY TO BE ANNEXED

FIRST COMMONWEALTH BANK, SUCCESSOR TRUSTEE
 IN: 201910040131959
 IN: 201910040131960
 P.I.D. 110-000143 = 13.852 DEED AC
 P.I.D. 110-002993 = 10.588 DEED AC
 P.I.D. 110-005711 = 10.162 DEED AC
 P.I.D. 110-005921 = 1.226 DEED AC

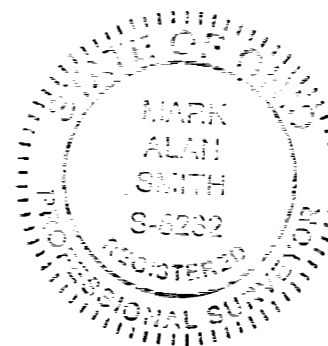
KEITH R. THATCHER & BRENDA THATCHER
 IN: 201604270051857
 P.I.D. 110-001051 = 22.454 ACRES

FIRST COMMONWEALTH BANK, SUCCESSOR TRUSTEE = 35.828 AC

RIGHT-OF-WAY = 0.071 AC

** THE FRANKLIN COUNTY COMMISSIONERS
 IN: 201604200048262
 0.007 OF AN ACRE

— PROPOSED CORPORATION LINE
 - - - EXISTING CORPORATION LINE
 ▨ AREA TO BE ANNEXED FROM BLENDON TOWNSHIP TO THE CITY OF COLUMBUS



THIS ANNEXATION PLAT IS A GENERAL DESCRIPTION OF THE LOCATION OF PROPERTY TO BE ANNEXED AND IS NOT A BOUNDARY SURVEY AS DEFINED IN THE O.A.C. CHAPTER 4733-57.
Mark Alan Smith 9/10/2020
 MARK ALAN SMITH, P.S. DATE
 PROFESSIONAL SURVEYOR NO. 8232



Civil & Environmental Consultants, Inc.
 250 Old Wilson Bridge Road · Suite 250 · Worthington, OH 43085
 614-540-6633 · 888-598-6808
 www.cecinc.com

PROPOSED ANNEXATION OF 58.3 ± ACRES FRANKLIN COUNTY, OHIO

ANNEXATION PLAT

DATE:	JULY 2020	DRAWN BY:	KAS
DWG SCALE:	1"=300'	CHECKED BY:	DBP
PROJECT NO:	301-348	APPROVED BY:	<u>[Signature]</u>

DRAWING NO.:
PLAT
 SHEET 1 OF 1