

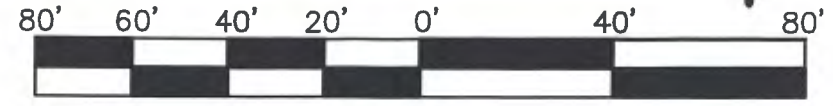
VICINITY MAP

# PROPOSED ANNEXATION OF ±0.9 ACRES

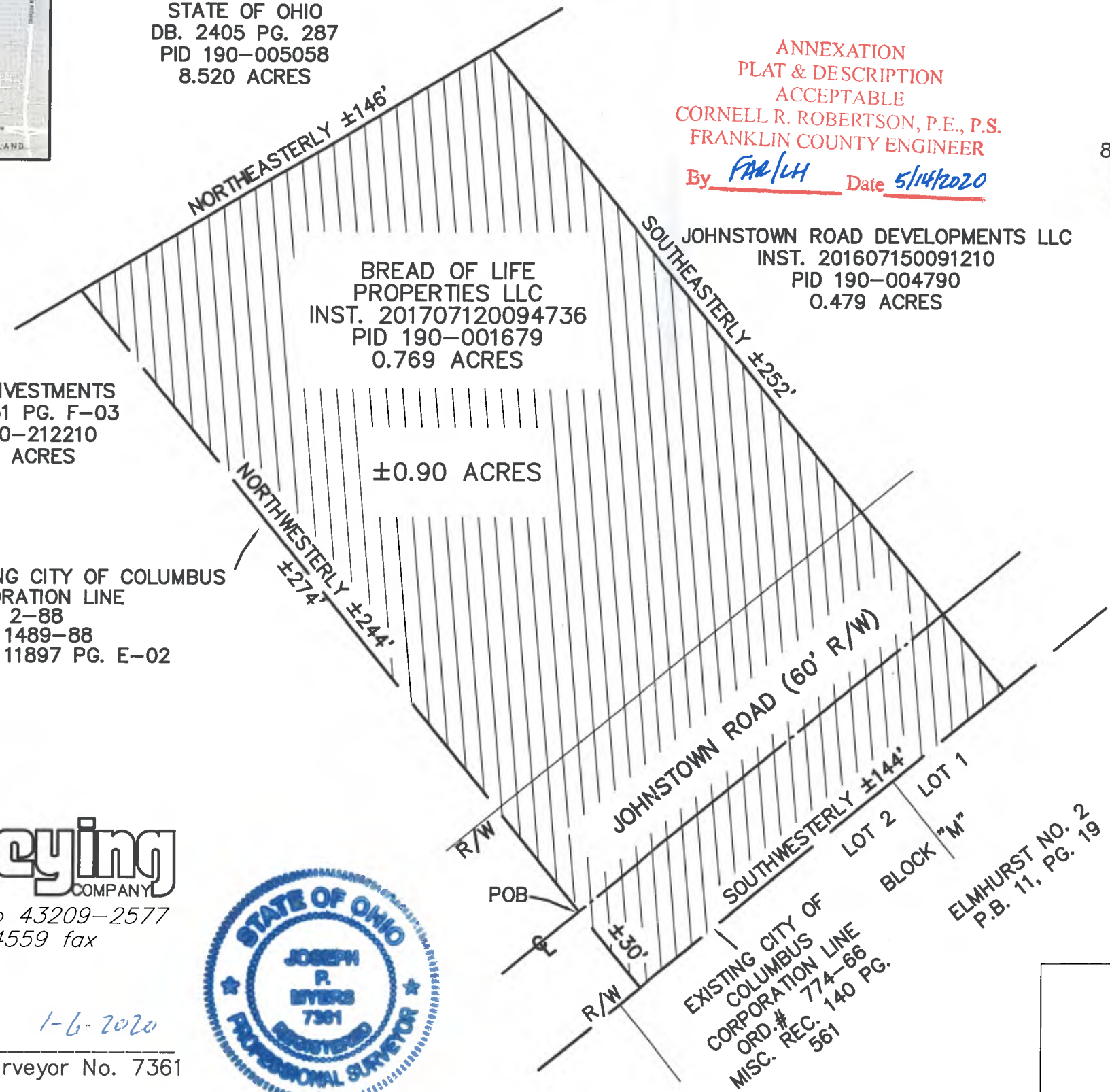
FROM: MIFFLIN TOWNSHIP  
TO: CITY OF COLUMBUS

STATE OF OHIO  
DB. 2405 PG. 287  
PID 190-005058  
8.520 ACRES

ANNEXATION  
PLAT & DESCRIPTION  
ACCEPTABLE  
CORNELL R. ROBERTSON, P.E., P.S.  
FRANKLIN COUNTY ENGINEER  
By FAR/LH Date 5/14/2020



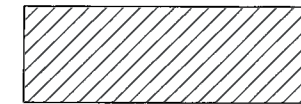
Scale: 1" = 40'  
JANUARY 6, 2018



EXISTING CITY OF COLUMBUS CORP. LINE

PROPOSED CITY OF COLUMBUS CORP. LINE

AREA TO BE ANNEXED



BEING ±0.90 ACRES, SITUATED IN THE STATE OF OHIO, COUNTY OF FRANKLIN, TOWNSHIP OF MIFFLIN, IN QUARTER TOWNSHIP 3, TOWNSHIP 1, RANGE 17, UNITED STATES MILITARY LANDS

CONTIGUITY LENGTH: ± 418'  
PERIMETER LENGTH: ± 816'  
CONTIGUITY PERCENTAGE: 51%

**Myers Surveying** COMPANY

2740 E. Main St., Bexley, Ohio 43209-2577  
(614)235-8677 ~ (614)235-4559 fax  
info@myerssurveying.com



By: Joseph P. Myers 1-6-2020  
Joseph P. Myers, Professional Surveyor No. 7361