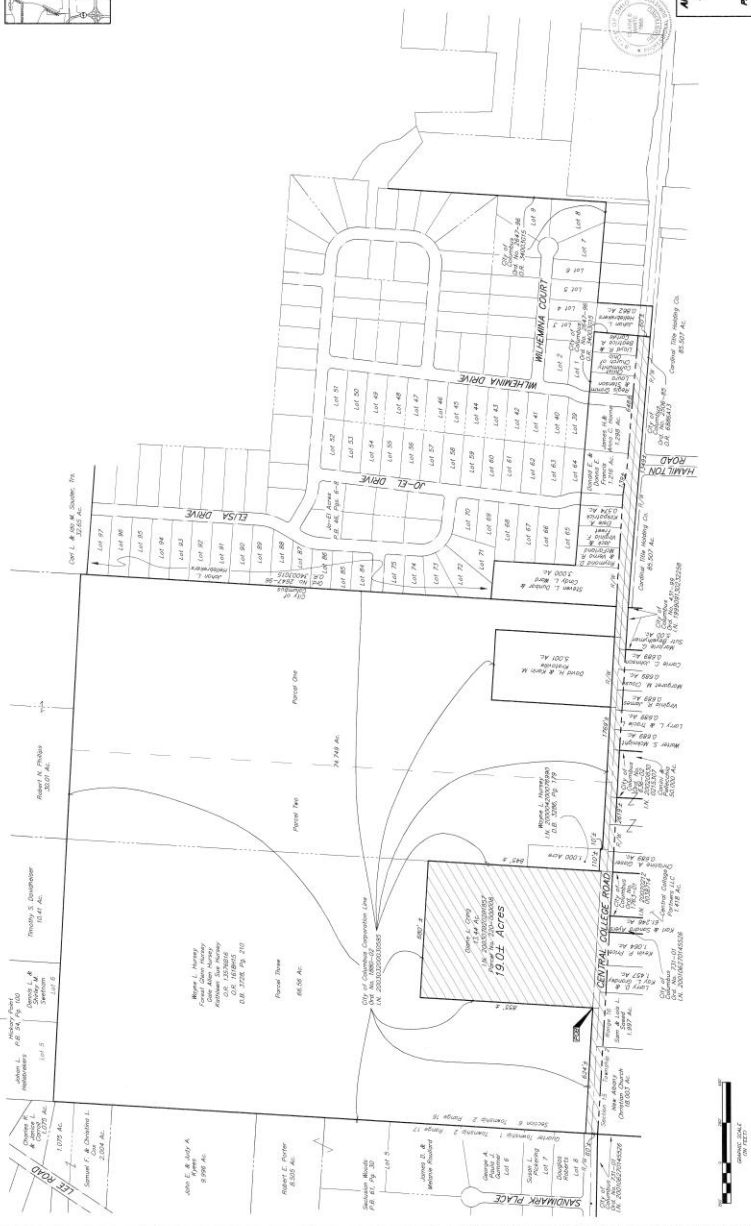


MAP ANNEXATION AN03-031R 19.0 Acres in Plain Township Diane Cring

ANNEXATION EXHIBIT
SECTION 6, TOWNSHIP 2, RANGE 16
UNITED STATES MILITARY LANDS
TOWNSHIP OF PLAIN, FRANKLIN COUNTY, OHIO



ANNEX NO. ORD NO. 2003-031R
PROPOSED ANNEXATION OF 19.0 ACRES
TO THE
CITY OF COLUMBUS
FROM
PLAIN TOWNSHIP, FRANKLIN COUNTY, OHIO
DATE: 11/15/2003 SCALE: 1" = 200'

EMERIT, INC.
Professional Surveyor No. 8883

