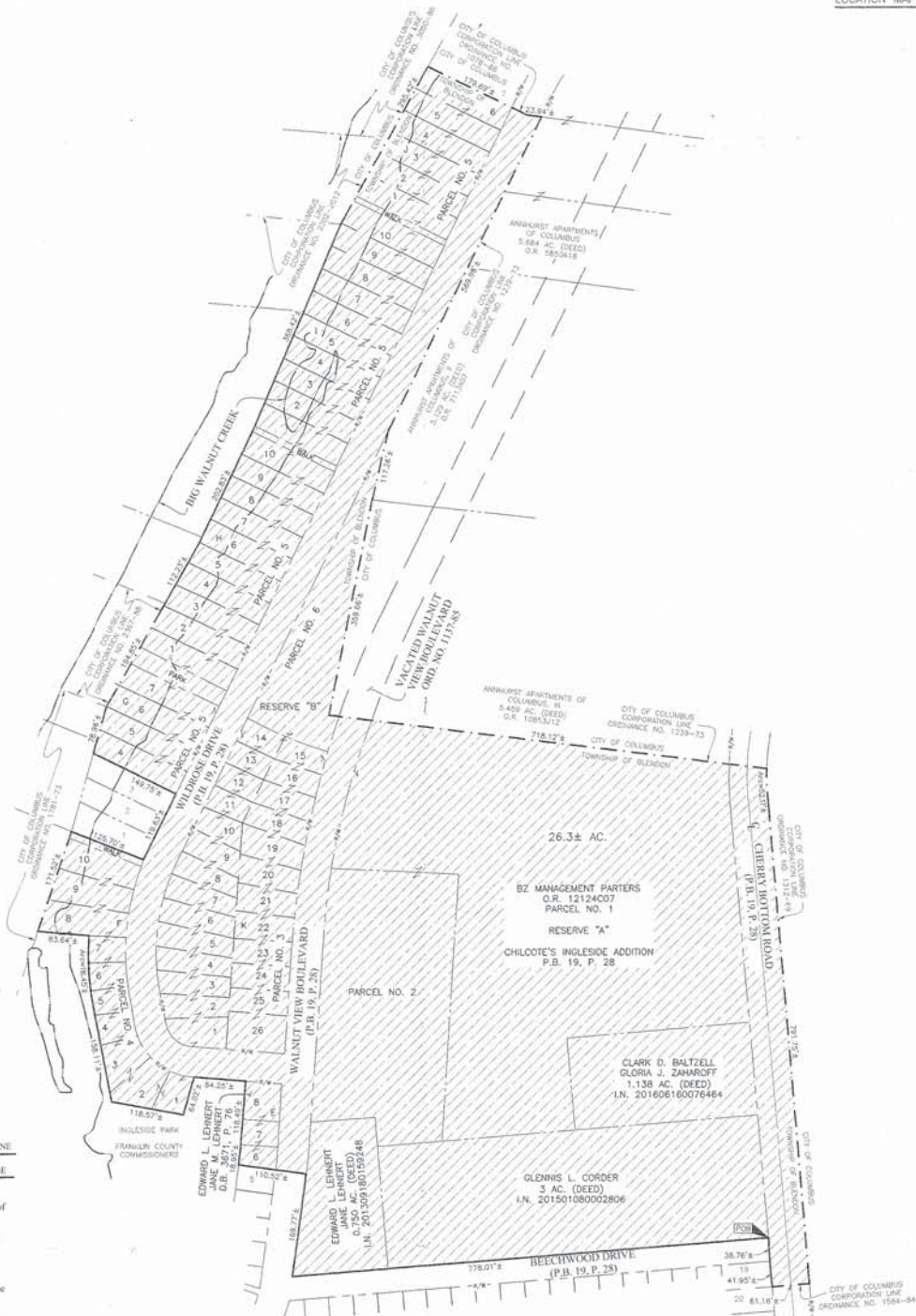


PROPOSED ANNEXATION OF 26.3± ACRES

FROM: TOWNSHIP OF BLENDON
TO: CITY OF COLUMBUS
QUARTER TOWNSHIP 4, TOWNSHIP 2, RANGE 17
UNITED STATES MILITARY LANDS
TOWNSHIP OF BLENDON, COUNTY OF FRANKLIN, STATE OF OHIO



LOCATION MAP AND BACKGROUND DRAWING
Not to Scale



AREA TO BE ANNEXED

PROPOSED CITY OF COLUMBUS CORPORATION LINE

EXISTING CITY OF COLUMBUS CORPORATION LINE

Contiguity Note:
Total perimeter of annexation area is 6594.55± feet, of which 5614.48± feet is contiguous with The City of Columbus by Ordinance Numbers 1078-86, 1239-73, 1512-69, 1584-84, 1781-73, 2302-2012, 2367-88 and 3050-88, giving 55% perimeter contiguity.

Note:
This annexation does not create islands of unincorporated areas within the limits of the area to be annexed.

This exhibit was prepared from GIS information from the Franklin County Auditor's Office, and is not intended for the transfer of real property.

RECEIVED
JUN 29 2017
Franklin County Engineer
Cornell R. Robertson, P.E., P.S.

ANNEXATION
PLAT & DESCRIPTION
ACCEPTABLE
CORNELL R. ROBERTSON, P.E., P.S.
FRANKLIN COUNTY ENGINEER
By *Phr* Date 6/29/17



EMHT		Date: May 22, 2017
Eyer, Macfarland, Houshaker & Tross, Inc. Engineers - Surveyors - Planners - Scientists 300 New Albany Road, Columbus, OH 43204 Phone: 614.279.8500 Fax: 614.279.3465 www.emht.com		Scale: 1" = 100'
Job No: 2017-0579		Sheet: 1 of 1
REVISIONS		
NO.	DATE	DESCRIPTION



By *Matthew A. Kirk* Date 22 May 17
Matthew A. Kirk
Professional Surveyor No. 7865