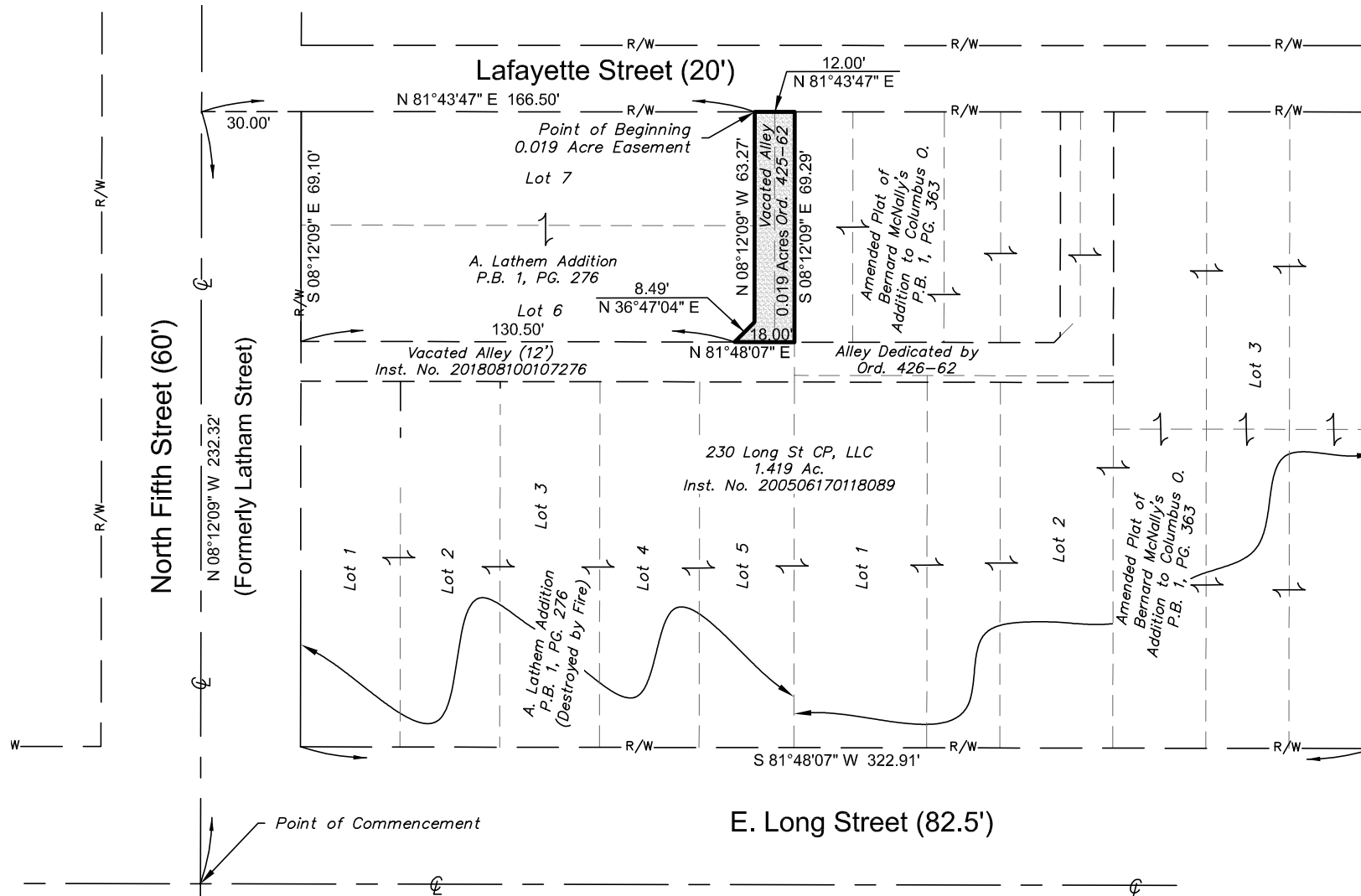


PLAT OF EASEMENT RELEASE

Situated in the City of Columbus, County of Franklin, State of Ohio and being all of a 12-foot wide alley dedicated in Ord. 426-62 as described in the deeds to the City of Columbus of record in Deed Book 2390, Pages 347, 348, 349, 351, 353, 356 & 358 respectively, as recorded in the Franklin County Recorder's Office.



The bearings are based on the bearing of S 81°48'07" W for the north right of way line for E. Long Street, which is measured from Grid North, referenced to the Ohio State Plane Coordinate System (South Zone) and the North American Datum of 1983 (2011 adjustment), as established utilizing a GPS survey and OPUS solution.



CERTIFICATION:

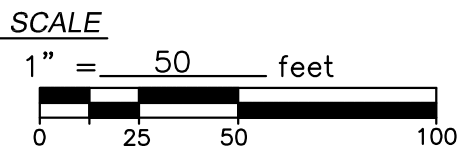
I hereby certify that this plat is a true and correct representation of a survey performed under my responsible direction and supervision and is correct to the best of my knowledge.

Daniel L. Quick

OHIO REGISTERED SURVEYOR NO. 7803

9/27/2021

DATE



Korda/Nemeth Engineering, Inc - Consulting Engineers
1650 Watermark Drive, Suite 200 - Columbus, Ohio 43215-7010
TEL 614-487-1650 FAX 614-487-9961 WEB www.korda.com