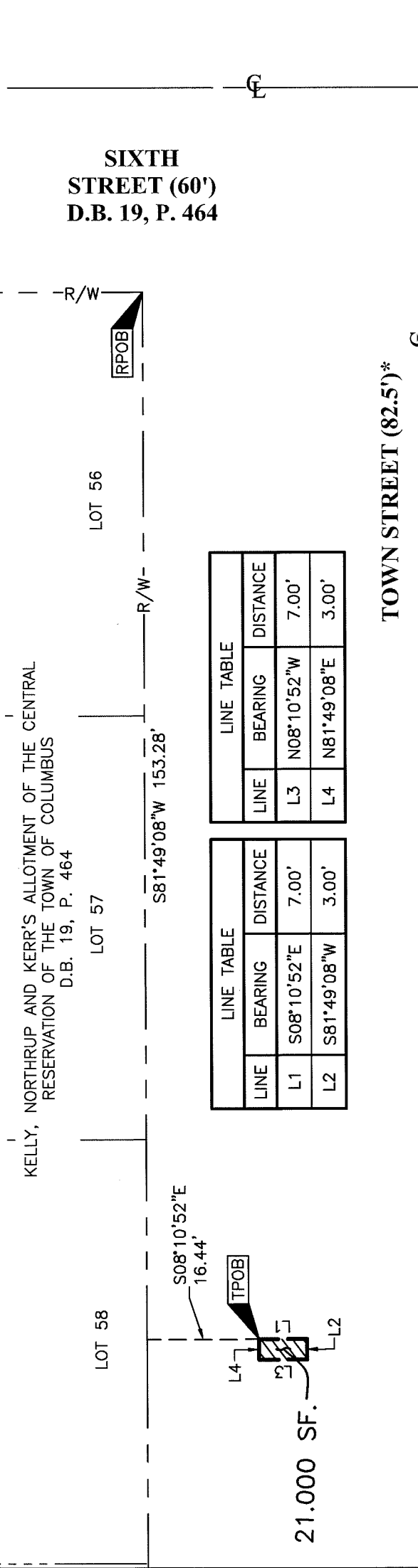




Evans, Mechwart, Hambleton & Tilton, Inc.
 Engineers • Surveyors • Planners • Scientists
 5500 New Albany Road, Columbus, OH 43054
 Phone: 614.775.4500 Toll Free: 888.775.3648
 emht.com

**SIGN AND SIGN FOUNDATION
 ENCROACHMENT EASEMENT
 BETWEEN 753.40' TO 767.40' ELEVATION (NAVD 88)
 LOCATED OVER THE RIGHT-OF-WAY OF TOWN STREET
 CITY OF COLUMBUS, COUNTY OF FRANKLIN, STATE OF OHIO**

Date: December 3, 2024
 Scale: 1" = 20'
 Job No: 2022-0742
 Sheet No: 1 of 1



NOTE:

* Dedicated in Deed Book "F", Page 332 (destroyed by fire), replatted in Plat Book 3, Page 247, and also represented in Plat Book 14, Page 27.

BASIS OF VERTICAL DATUM:

The Vertical Datum is based on the elevations established by the Franklin County Engineering Department at monument MORLAN, being 793.256 feet in elevation and at monument TACKETT, being 793.735 feet in elevation. The said elevations were transferred from said Franklin County Engineering Department monuments using static GPS procedures and the GEOID12B model to the site. The said monuments being source bench marks with elevations that are based on the North American Vertical Datum of 1988.



By *Heather L. King*
 Heather L. King
 Professional Surveyor No. 8307
 hking@emht.com

Date: 12/3/24