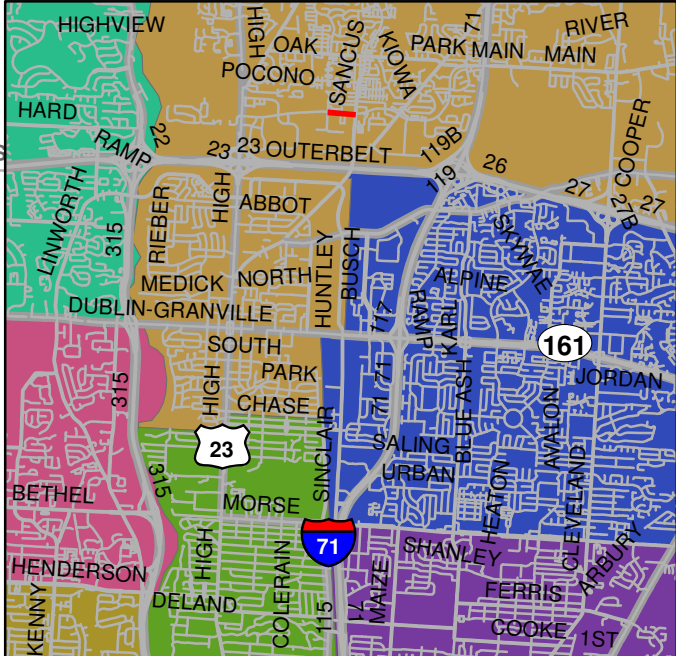
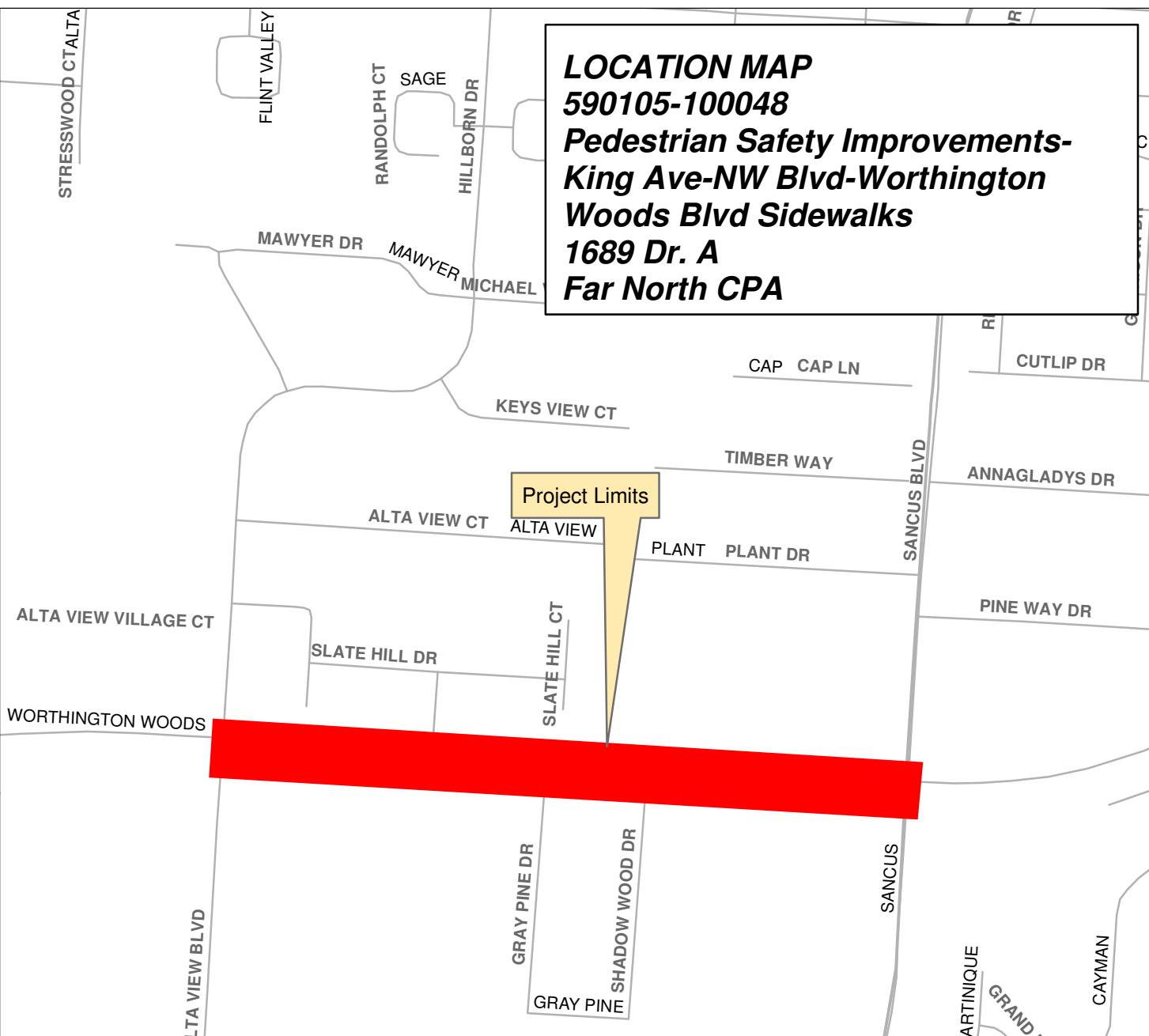


# LOCATION MAP

590105-10048

**Pedestrian Safety Improvements-  
King Ave-NW Blvd-Worthington  
Woods Blvd Sidewalks**

**1689 Dr. A  
Far North CPA**



0 0.05 0.1 Miles

City of Columbus  
Department of Public Service  
Division of Mobility Options  
April 2011