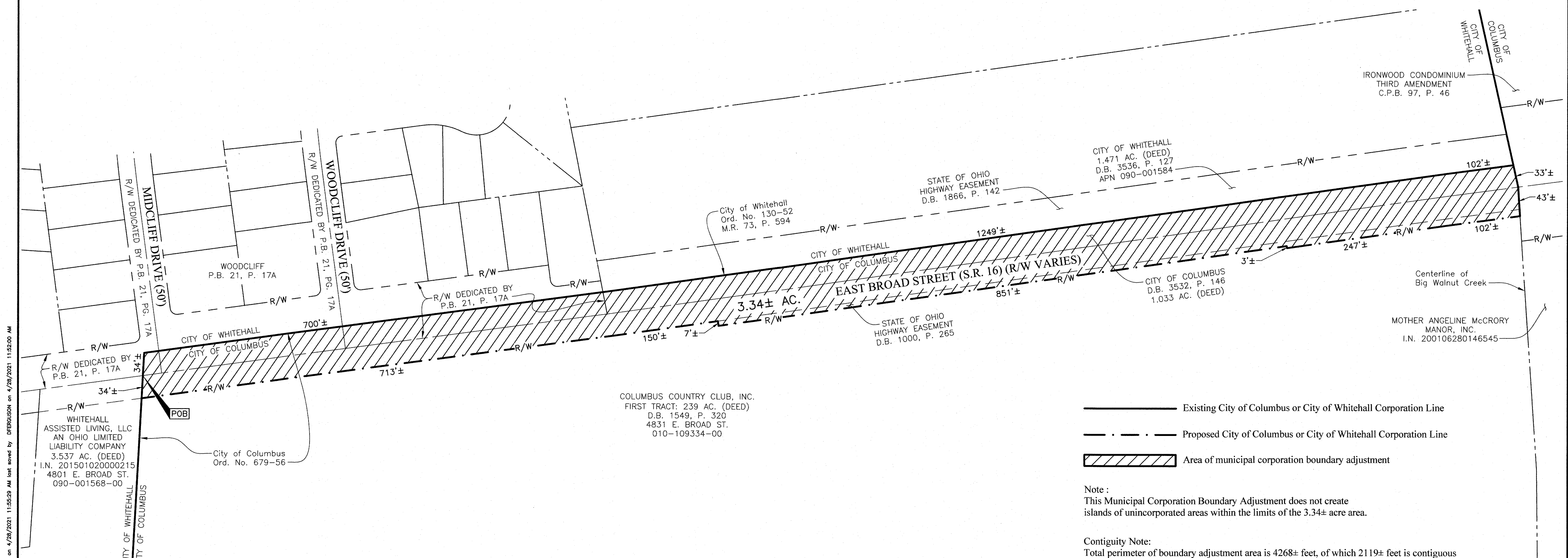


# PROPOSED MUNICIPAL CORPORATION BOUNDARY ADJUSTMENT OF 3.34± ACRES FROM THE CITY OF COLUMBUS TO THE CITY OF WHITEHALL

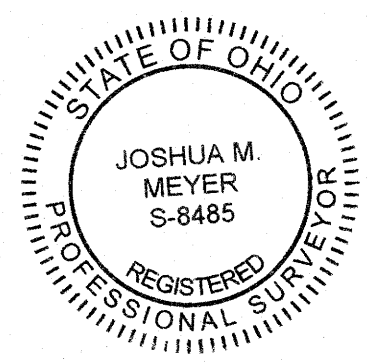
SECTION 4, TOWNSHIP 12 NORTH, RANGE 21 WEST  
REFUGEE LANDS  
CITY OF COLUMBUS, COUNTY OF FRANKLIN, STATE OF OHIO



- Existing City of Columbus or City of Whitehall Corporation Line
- - - Proposed City of Columbus or City of Whitehall Corporation Line
- Area of municipal corporation boundary adjustment

**Note:**  
This Municipal Corporation Boundary Adjustment does not create islands of unincorporated areas within the limits of the 3.34± acre area.

**Contiguity Note:**  
Total perimeter of boundary adjustment area is 4268± feet, of which 2119± feet is contiguous with the City of Whitehall by Ordinance Number 130-52, giving 50% perimeter contiguity.

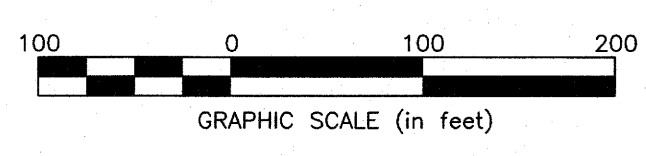


By Joshua M. Meyer Date 4-28-2021  
Joshua M. Meyer  
Professional Surveyor No. 8485  
jmeyer@emht.com

ANNEXATION  
PLAT & DESCRIPTION  
ACCEPTABLE  
CORNELL R. ROBERTSON, P.E., P.S.  
FRANKLIN COUNTY ENGINEER  
By 30 Apr 21 Date AS/FMR

PRELIMINARY  
APPROVAL  
FRANKLIN COUNTY  
ENGINEERING DEPT.  
DATE: \_\_\_\_\_ BY: \_\_\_\_\_

**RECEIVED**  
APR 30 2021  
Franklin County Engineer  
Cornell R. Robertson, P.E., P.S.



<b>EMHT</b>		Date: APRIL 28, 2021
Evans, Mechwart, Hambleton & Tilton, Inc. Engineers • Surveyors • Planners • Scientists 5500 New Albany Road, Columbus, OH 43054 Phone: 614.775.4500 Toll Free: 888.775.3648 emht.com		Scale: 1" = 100'
		Job No: 2020-1297
		Sheet: 1 of 1
REVISIONS		
MARK	DATE	DESCRIPTION

J:\2020\1297\DWG\CASHIERS\20201297-VS-EXHB-ANNX-01.DWG plotted by FERROUSON on 4/28/2021 11:52:00 AM