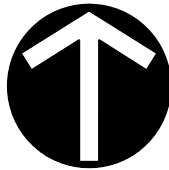


P:\2013\133-034\Survey\CADD\133-034 RELEASE OF EASEMENTS-NORTH ESMT.dwg(RELEASE 8.5X14) LS:(06/10/2014 - cgibson) - LP: 6/11/2014 8:44 AM



NORTH

SCALE IN FEET

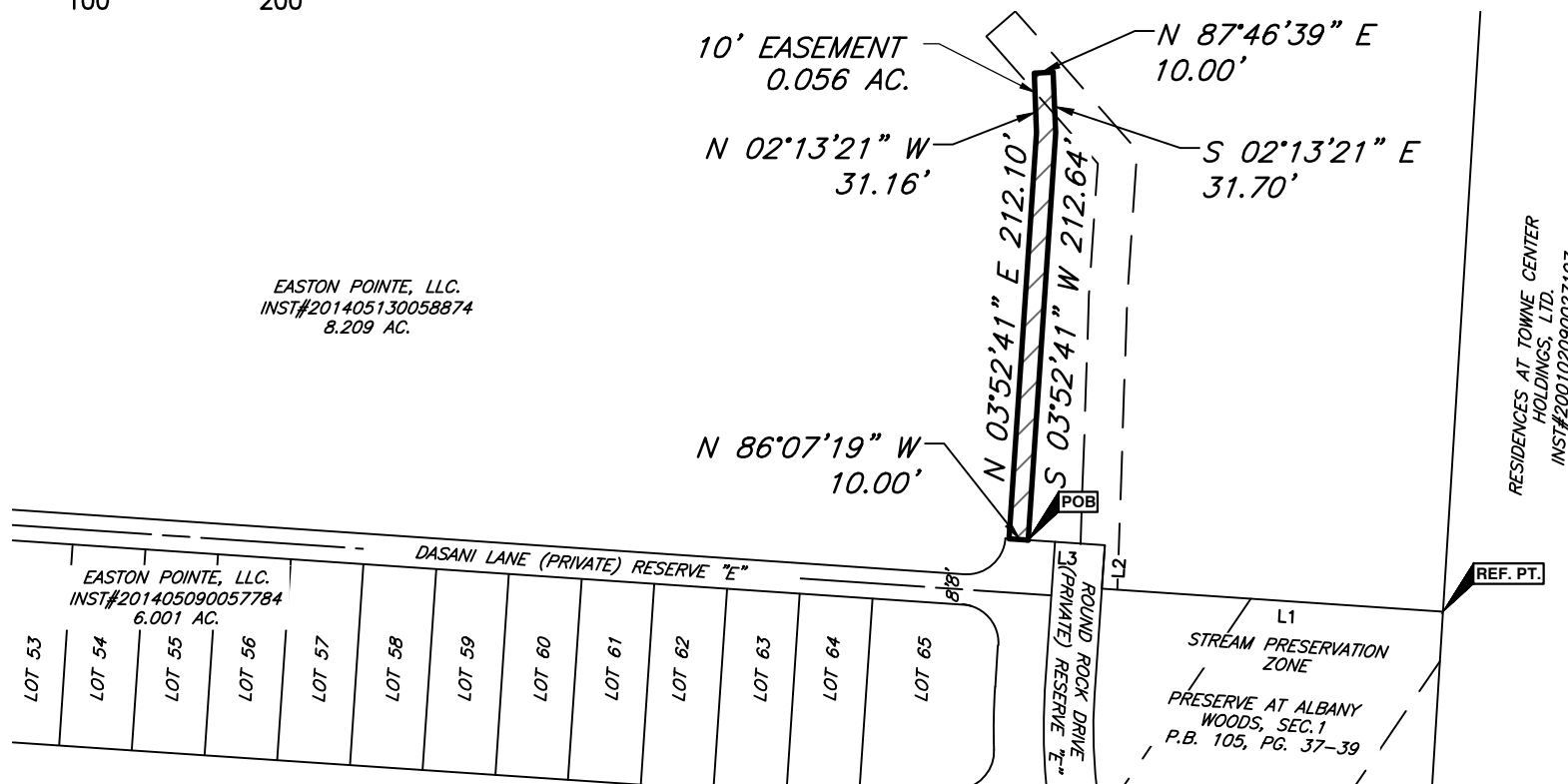


RELEASE OF EASEMENT

STATE OF OHIO, COUNTY OF FRANKLIN, CITY OF COLUMBUS,
IN QUARTER TOWNSHIP 2, TOWNSHIP 1, RANGE 17,
UNITED STATES MILITARY LANDS

BASIS OF BEARING:

BASIS OF BEARING FOR THIS DESCRIPTION IS SOUTH 86°07'19" EAST,
FOR THE NORTHERLY LINE OF PRESERVE AT ALBANY WOODS, SECTION 1,
BASED ON THE PLAT THEREOF, OF RECORD IN PLAT BOOK 105, PAGE
38, RECORDER'S OFFICE, FRANKLIN COUNTY, OHIO.



EASTON POINTE, LLC.
INST#201405130058874
8.209 AC.

EASTON POINTE, LLC.
INST#201405090057784
6.001 AC.

RESIDENCES AT TOWNE CENTER
HOLDINGS, LTD.
INST#200102090027107

REF. PT.

CIVIL & ENVIRONMENTAL CONSULTANTS, INC.
JOHN J. RAAB
PROFESSIONAL SURVEYOR NO.: 7863

LINE TABLE		
LINE #	DIRECTION	LENGTH
L1	N86°07'19"W	178.28'
L2	N3°52'41"E	22.63'
L3	N86°07'19"W	40.08'

RELEASE OF EASEMENT

Situate In
CITY OF COLUMBUS
FRANKLIN COUNTY AND STATE OF OHIO
Made For
THE PRESERVE AT ALBANY WOODS
VILLAGE COMMUNITIES REAL ESTATE, INC.

DATE:	JUNE 2014	SCALE:	1"=100'	DRAWING NO.:	
DRAWN BY:	BA	CHECKED BY:	JJR	ESMT	SHEET 1 OF 1
PROJECT NO:	133-034	APPROVED BY:	JAM		

CEC

Civil & Environmental Consultants, Inc.

8740 Orion Place, Suite 100 - Columbus, OH 43240
614-540-6633 · 888-598-6808
www.cecinc.com