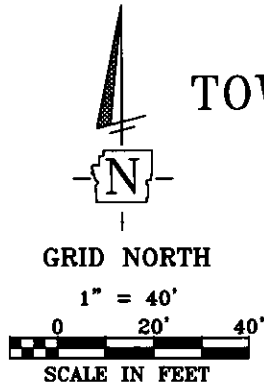
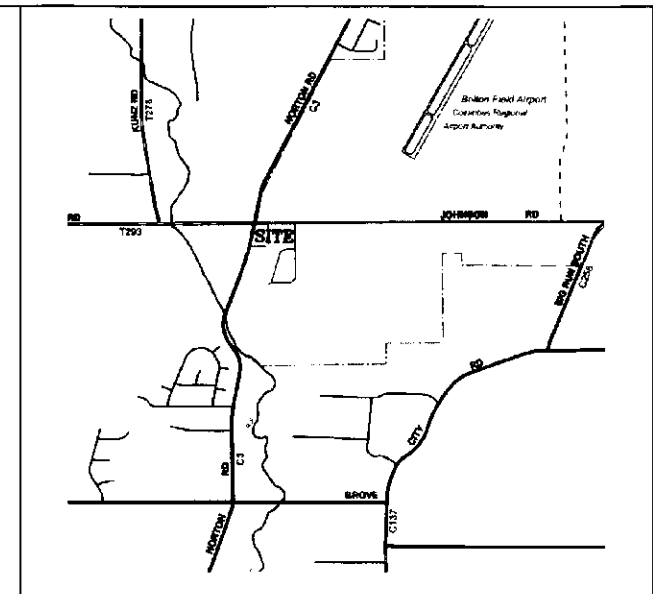
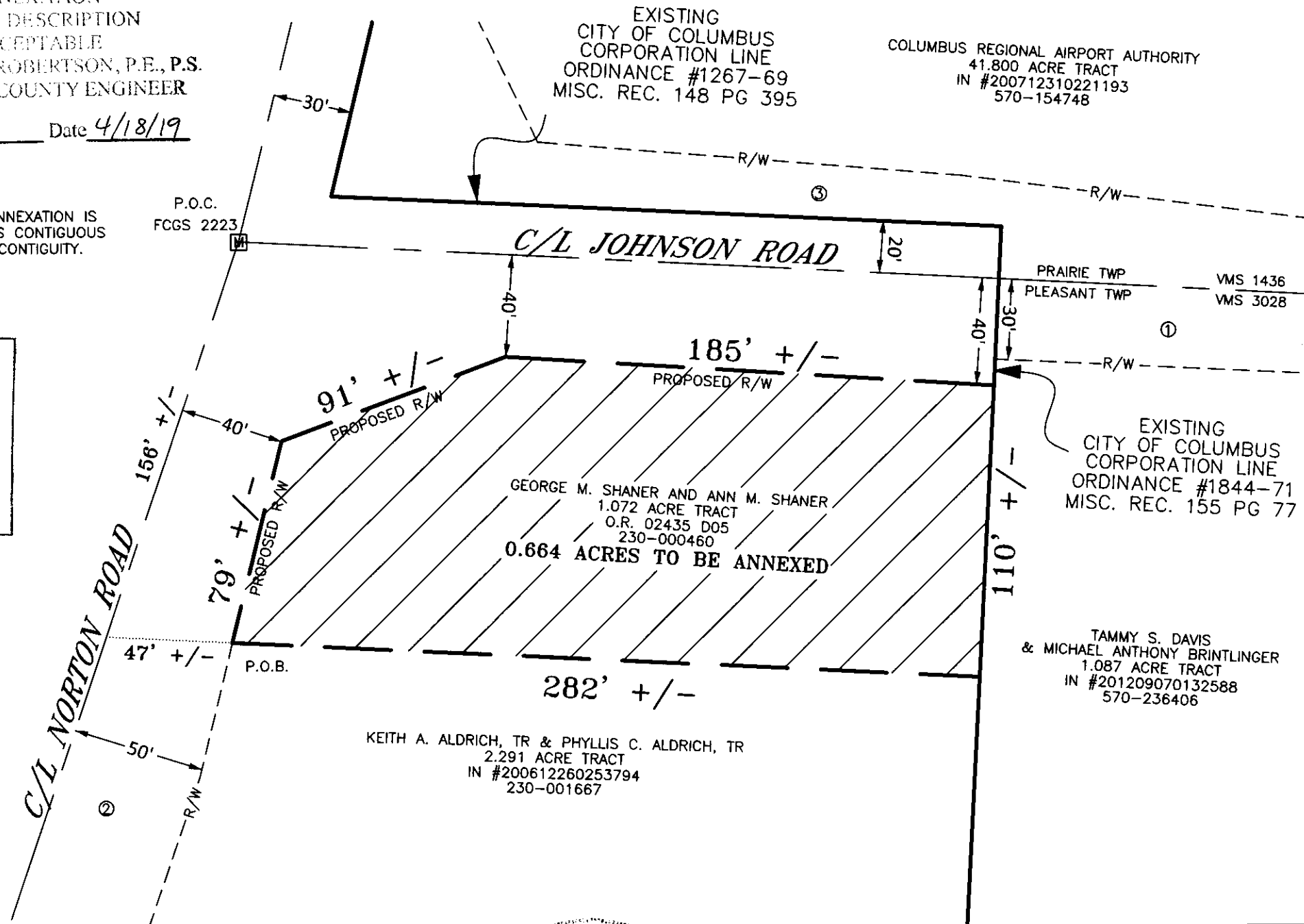
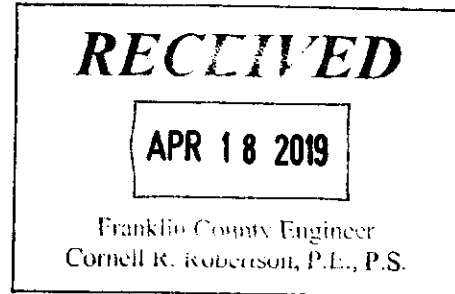


SITUATE IN THE STATE OF OHIO, COUNTY OF FRANKLIN,
TOWNSHIP OF PLEASANT, BEING PART OF VMS 3028, AND CONTAINING A TOTAL
OF 0.664 +/- ACRES TO THE CITY OF COLUMBUS



ANNEXATION
PLAT & DESCRIPTION
ACCEPTABLE
CORNELL R. ROBERTSON, P.E., P.S.
FRANKLIN COUNTY ENGINEER
By DL Date 4/18/19

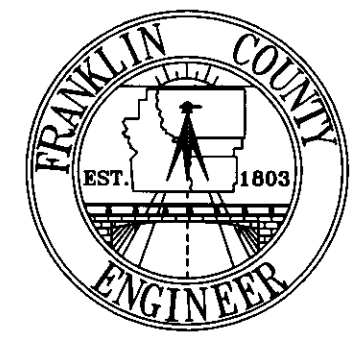
THE TOTAL PERIMETER OF THE PROPOSED ANNEXATION IS
747 FEET +/- OF WHICH 110 FEET +/- IS CONTIGUOUS
WITH THE CITY OF COLUMBUS, HAVING 15% CONTIGUITY.



LOCATION MAP
NOT TO SCALE

OWNERSHIP

- ① CITY OF COLUMBUS
0.596 ACRE TRACT
O.R. 32855 E13
- ② FRANKLIN COUNTY COMMISSIONERS
0.317 ACRE TRACT
IN #201902120016806
- ③ FRANKLIN COUNTY COMMISSIONERS
1.952 ACRE HIGHWAY EASEMENT
IN #201904110041269



- LEGEND
- AREA TO BE ANNEXED
 - EXISTING CITY OF COLUMBUS CORPORATION LINE
 - PROPOSED CITY OF COLUMBUS CORPORATION LINE



THIS PLAT WAS PREPARED IN THE OFFICE OF THE
FRANKLIN COUNTY ENGINEER BY DAVID L. PEARSON,
OHIO REGISTERED SURVEYOR NO. 7298, FROM THE
AVAILABLE RECORDS ON FILE WITHIN THE FRANKLIN
COUNTY OFFICES, AND DOES NOT CONSTITUTE
INFORMATION OF AN ACTUAL FIELD SURVEY.

David L. Pearson 4/18/2019
DAVID L. PEARSON P.S. DATE
OHIO REGISTERED SURVEYOR NO. 7298

CHECKED: DLP
CALCULATED: PAR
ANNEXATION PLAT
1