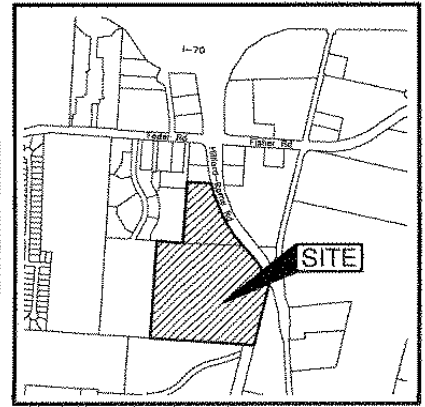
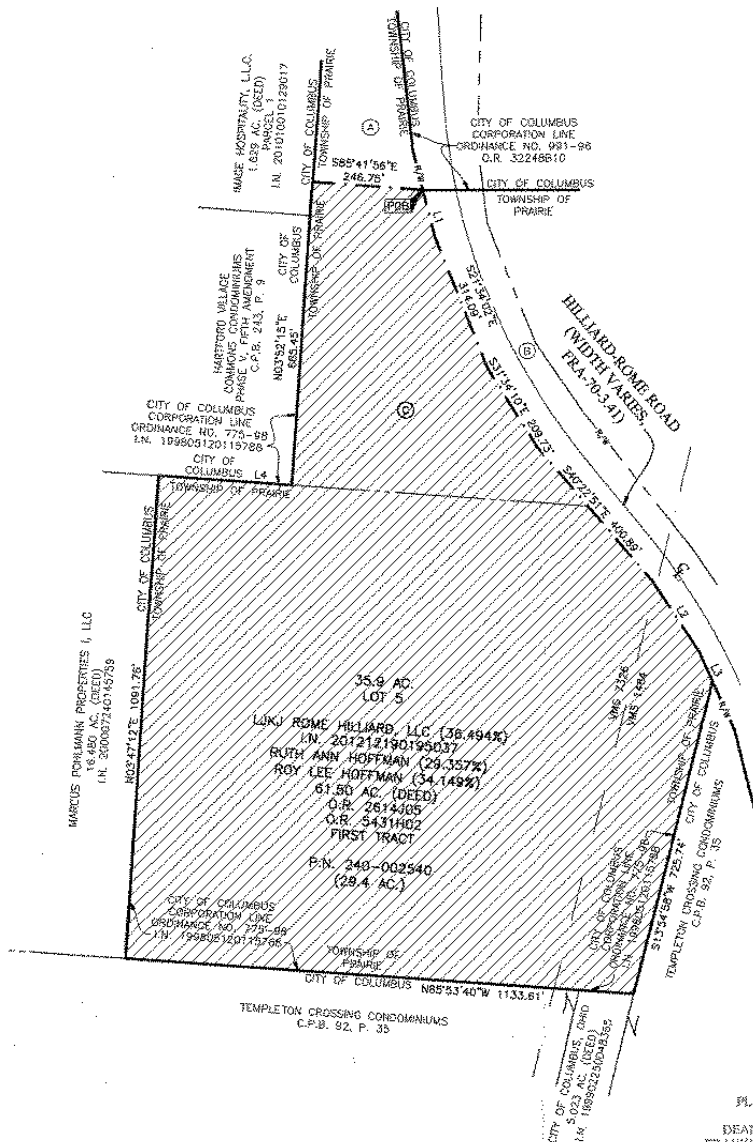


AN15-018
± 35.00 Acres / Prairie Township
LJKJ Rome Hilliard LLC,
(Hilliard Rome Road)



LOCATION MAP AND BACKGROUND DRAWING
 Not to Scale



- (A) DEAN E. SALTS, TRUSTEE
0.972 AC. (DEED)
TRACT THREE
I.N. 201411930149462
- (B) STATE OF OHIO
PARCEL NO. 104 WD
7.879 AC. (DEED)
D.B. 2690, P. 249
- LOT 1
PLAY "A"
C.R. 80, P. 196 OF THE
COURT OF COMMON PLEAS
- (C) LJKJ ROME HILLIARD, LLC (36.494%)
RUTH ANN HOFFMAN (29.357%)
ROY LEE HOFFMAN (34.149%)
6.510 AC. (DEED)
I.N. 201306120087793
P.N. 240-00203
(6.5 AC.)

AREA TO BE ANNEXED

PROPOSED CITY OF COLUMBUS CORPORATION LINE
 EXISTING CITY OF COLUMBUS CORPORATION LINE

Contiguity Note:
 Total perimeter of annexation area is 5478.01 feet, of which 2931.93 feet is contiguous with the City of Columbus by Ordinance Number 775-98 giving 72% perimeter contiguity.

Note:
 This annexation does not create islands of unincorporated areas within the limits of the area to be annexed.

ANNEXATION
 PLAN & DESCRIPTION
 ACCEPTABLE
 DEAN C. RINGLE, P.E., P.S.
 FRANKLIN COUNTY ENGINEER
 By BB Date 10/29/15

RECEIVED

OCT 30 2015
 Franklin County Engineer
 Dean C. Ringle, P.E., P.S.

By Matthew A. Kirk Date 29 OCT 15
 Matthew A. Kirk
 Professional Surveyor No. 7865

LINE	BEARING	DISTANCE
L1	S14°27'57"E	110.68'
L2	S33°03'34"E	102.46'
L3	S23°34'36"E	71.46'
L4	S65°51'22"E	295.39'



<p>EMHT Environmental, Mechanical, Electrical & Plumbing, Inc. Engineers • Surveyors • Planners • Scientists 5200 New Albany Road, Columbus, OH 43254 Phone: 614.273.6500 Fax: 614.273.3440 emht.com</p>	Date: October 29, 2015
	Scale: 1" = 200'
	Job No: 2015-1178
	Sheet: 1 of 1

MARK	DATE	DESCRIPTION

