

ANNA M. ERBS AND  
JOSEPH ERBS SUBDIVISION  
PLAT BOOK 4 PG. 151  
WEINLAND PARK DEVELOPMENT LLC  
Pct. No. 010-026326  
Inst. No. 200810080150639

PARCEL 3

S86°33'29"E 105.00' (M)

ALLEY (16')

P.B. 4 PAGE 151

N86°33'29"W 105.00' (M)(P)

0.039 AC. (M)

1,680 SQ. FT. (M)

ANNA M. ERBS AND  
JOSEPH ERBS SUBDIVISION  
PLAT BOOK 4 PG. 151

WEINLAND PARK DEVELOPMENT LLC  
Pct. No. 010-024601  
Inst. No. 200810080150639

WEINLAND PARK DEVELOPMENT LLC  
Pct. No. 010-029887  
Inst. No. 201708150115020

WEINLAND PARK DEVELOPMENT LLC  
Pct. No. 010-016248  
Inst. No. 200810080150639

WEINLAND PARK DEVELOPMENT LLC  
Pct. No. 010-016248  
Inst. No. 200810080150639

WEINLAND PARK DEVELOPMENT LLC  
Pct. No. 010-016248  
Inst. No. 200810080150639

WEINLAND PARK DEVELOPMENT LLC  
Pct. No. 010-016248  
Inst. No. 200810080150639

WEINLAND PARK DEVELOPMENT LLC  
Pct. No. 010-016248  
Inst. No. 200810080150639

WEINLAND PARK DEVELOPMENT LLC  
Pct. No. 010-016248  
Inst. No. 200810080150639

WEINLAND PARK DEVELOPMENT LLC  
Pct. No. 010-016248  
Inst. No. 200810080150639

WEINLAND PARK DEVELOPMENT LLC  
Pct. No. 010-016248  
Inst. No. 200810080150639

WEINLAND PARK DEVELOPMENT LLC  
Pct. No. 010-016248  
Inst. No. 200810080150639

WEINLAND PARK DEVELOPMENT LLC  
Pct. No. 010-016248  
Inst. No. 200810080150639

WEINLAND PARK DEVELOPMENT LLC  
Pct. No. 010-016248  
Inst. No. 200810080150639

WEINLAND PARK DEVELOPMENT LLC  
Pct. No. 010-016248  
Inst. No. 200810080150639

WEINLAND PARK DEVELOPMENT LLC  
Pct. No. 010-016248  
Inst. No. 200810080150639

WEINLAND PARK DEVELOPMENT LLC  
Pct. No. 010-016248  
Inst. No. 200810080150639

WEINLAND PARK DEVELOPMENT LLC  
Pct. No. 010-016248  
Inst. No. 200810080150639

WEINLAND PARK DEVELOPMENT LLC  
Pct. No. 010-016248  
Inst. No. 200810080150639

WEINLAND PARK DEVELOPMENT LLC  
Pct. No. 010-016248  
Inst. No. 200810080150639

WEINLAND PARK DEVELOPMENT LLC  
Pct. No. 010-016248  
Inst. No. 200810080150639

WEINLAND PARK DEVELOPMENT LLC  
Pct. No. 010-016248  
Inst. No. 200810080150639

WEINLAND PARK DEVELOPMENT LLC  
Pct. No. 010-016248  
Inst. No. 200810080150639

WEINLAND PARK DEVELOPMENT LLC  
Pct. No. 010-016248  
Inst. No. 200810080150639

WEINLAND PARK DEVELOPMENT LLC  
Pct. No. 010-016248  
Inst. No. 200810080150639

WEINLAND PARK DEVELOPMENT LLC  
Pct. No. 010-016248  
Inst. No. 200810080150639

WEINLAND PARK DEVELOPMENT LLC  
Pct. No. 010-016248  
Inst. No. 200810080150639

WEINLAND PARK DEVELOPMENT LLC  
Pct. No. 010-016248  
Inst. No. 200810080150639

WEINLAND PARK DEVELOPMENT LLC  
Pct. No. 010-016248  
Inst. No. 200810080150639

WEINLAND PARK DEVELOPMENT LLC  
Pct. No. 010-016248  
Inst. No. 200810080150639

WEINLAND PARK DEVELOPMENT LLC  
Pct. No. 010-016248  
Inst. No. 200810080150639

WEINLAND PARK DEVELOPMENT LLC  
Pct. No. 010-016248  
Inst. No. 200810080150639

WEINLAND PARK DEVELOPMENT LLC  
Pct. No. 010-016248  
Inst. No. 200810080150639

WEINLAND PARK DEVELOPMENT LLC  
Pct. No. 010-016248  
Inst. No. 200810080150639

WEINLAND PARK DEVELOPMENT LLC  
Pct. No. 010-016248  
Inst. No. 200810080150639

WEINLAND PARK DEVELOPMENT LLC  
Pct. No. 010-016248  
Inst. No. 200810080150639

WEINLAND PARK DEVELOPMENT LLC  
Pct. No. 010-016248  
Inst. No. 200810080150639

WEINLAND PARK DEVELOPMENT LLC  
Pct. No. 010-016248  
Inst. No. 200810080150639

WEINLAND PARK DEVELOPMENT LLC  
Pct. No. 010-016248  
Inst. No. 200810080150639

WEINLAND PARK DEVELOPMENT LLC  
Pct. No. 010-016248  
Inst. No. 200810080150639

WEINLAND PARK DEVELOPMENT LLC  
Pct. No. 010-016248  
Inst. No. 200810080150639

WEINLAND PARK DEVELOPMENT LLC  
Pct. No. 010-016248  
Inst. No. 200810080150639

WEINLAND PARK DEVELOPMENT LLC  
Pct. No. 010-016248  
Inst. No. 200810080150639

WEINLAND PARK DEVELOPMENT LLC  
Pct. No. 010-016248  
Inst. No. 200810080150639

WEINLAND PARK DEVELOPMENT LLC  
Pct. No. 010-016248  
Inst. No. 200810080150639

WEINLAND PARK DEVELOPMENT LLC  
Pct. No. 010-016248  
Inst. No. 200810080150639

WEINLAND PARK DEVELOPMENT LLC  
Pct. No. 010-016248  
Inst. No. 200810080150639

WEINLAND PARK DEVELOPMENT LLC  
Pct. No. 010-016248  
Inst. No. 200810080150639

WEINLAND PARK DEVELOPMENT LLC  
Pct. No. 010-016248  
Inst. No. 200810080150639

WEINLAND PARK DEVELOPMENT LLC  
Pct. No. 010-016248  
Inst. No. 200810080150639

WEINLAND PARK DEVELOPMENT LLC  
Pct. No. 010-016248  
Inst. No. 200810080150639

WEINLAND PARK DEVELOPMENT LLC  
Pct. No. 010-016248  
Inst. No. 200810080150639

WEINLAND PARK DEVELOPMENT LLC  
Pct. No. 010-016248  
Inst. No. 200810080150639

WEINLAND PARK DEVELOPMENT LLC  
Pct. No. 010-016248  
Inst. No. 200810080150639

WEINLAND PARK DEVELOPMENT LLC  
Pct. No. 010-016248  
Inst. No. 200810080150639

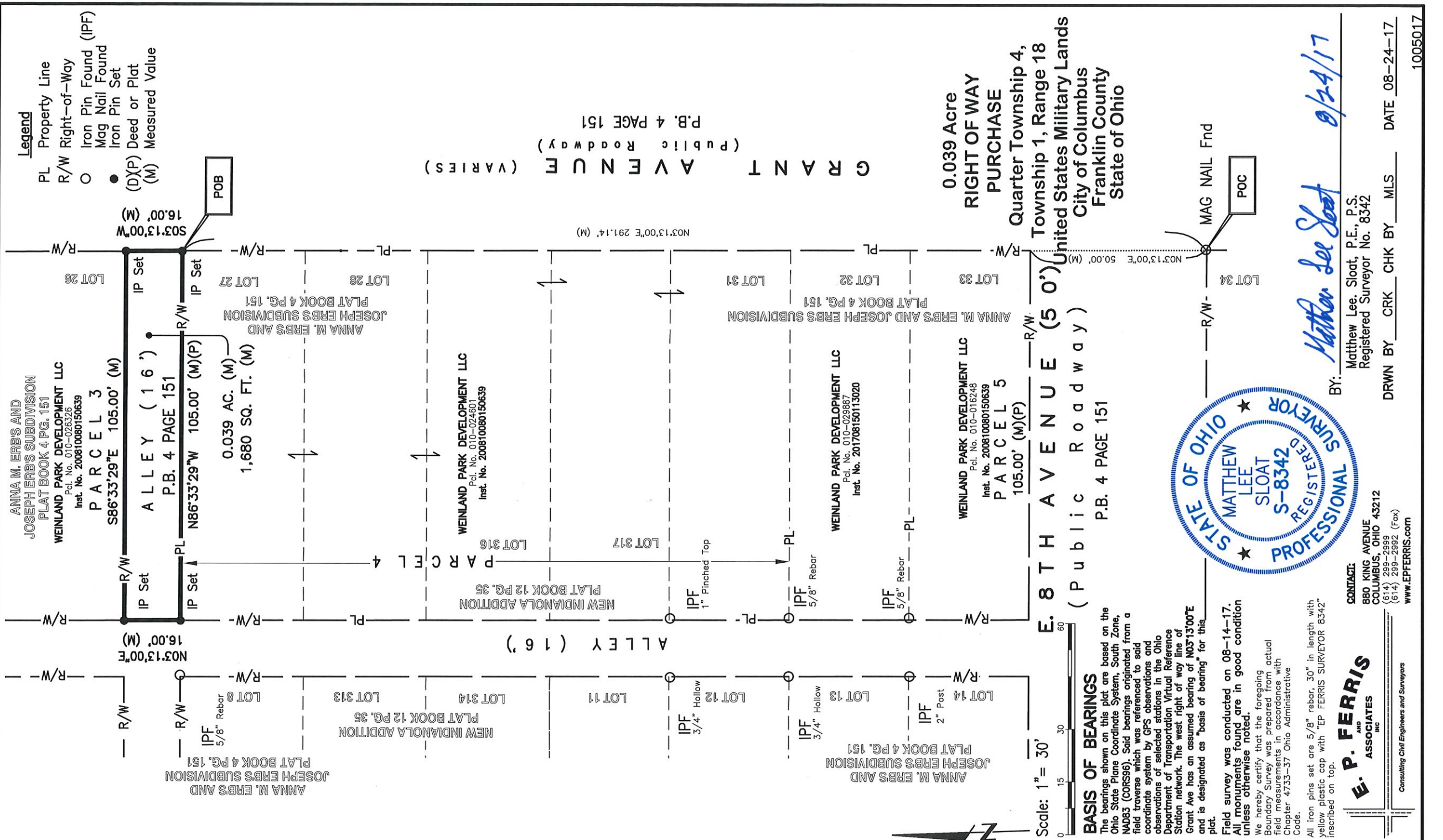
WEINLAND PARK DEVELOPMENT LLC  
Pct. No. 010-016248  
Inst. No. 200810080150639

WEINLAND PARK DEVELOPMENT LLC  
Pct. No. 010-016248  
Inst. No. 200810080150639

WEINLAND PARK DEVELOPMENT LLC  
Pct. No. 010-016248  
Inst. No. 200810080150639

**Legend**

- PL Property Line
- R/W Right-of-Way
- Iron Pin Found (IPF)
- Mag Nail Found (MNF)
- Iron Pin Set (IPS)
- (D)(P) Deed or Plat
- (M) Measured Value



Scale: 1" = 30'

**BASIS OF BEARINGS**

The bearings shown on this plat are based on the Ohio State Plane Coordinate System, South Zone, NAD83 (CORSS96). Said bearings originated from a field traverse which was referenced to said coordinate system by GPS observations and observations of selected stations in the Ohio Department of Transportation Virtual Reference Station network. The west right of way line of Grant Ave has an assumed bearing of N03°13'00"E and is designated as "basis of bearing" for this plat.

Field survey was conducted on 08-14-17. All monuments found are in good condition unless otherwise noted.

We hereby certify that the foregoing Boundary Survey was prepared from actual field measurements in accordance with Chapter 4733-37 Ohio Administrative Code.

All iron pins set are 5/8" rebar, 30" in length with yellow plastic cap with "EP FERRIS SURVEYOR 8342" inscribed on top.

**EP. P. FERRIS AND ASSOCIATES INC.**  
Consulting Civil Engineers and Surveyors

**CONTACT:**  
880 KING AVENUE  
COLUMBUS, OHIO 43212  
(614) 289-2889  
(614) 289-2892 (Fax)  
www.EPFERRIS.com



BY: *Matthew Lee Sloat* 8/24/17  
Matthew Lee Sloat, P.E., P.S.  
Registered Surveyor No. 8342

DRWN BY CRK CHK BY MLS DATE 08-24-17

1005017

GRANT AVENUE (VARIES)  
(Public Roadway)  
P.B. 4 PAGE 151

0.039 Acre  
RIGHT OF WAY  
PURCHASE  
Quarter Township 4,  
Township 1, Range 18  
United States Military Lands  
Franklin County  
State of Ohio

E. 8TH AVENUE (50')  
(Public Roadway)  
P.B. 4 PAGE 151