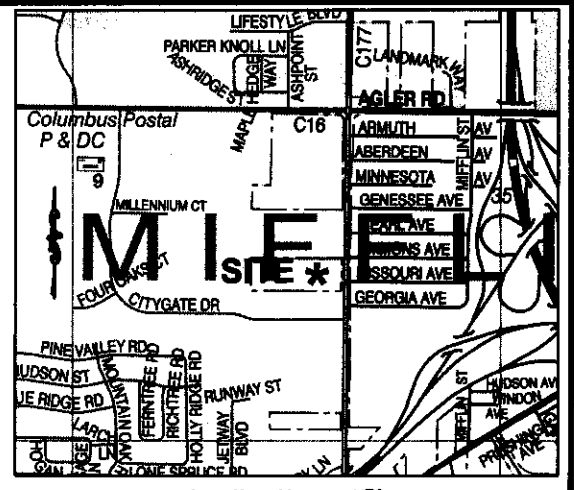
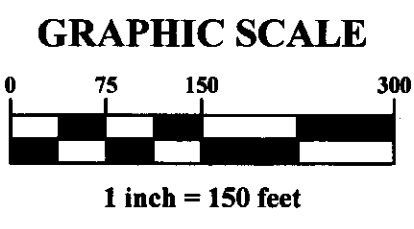
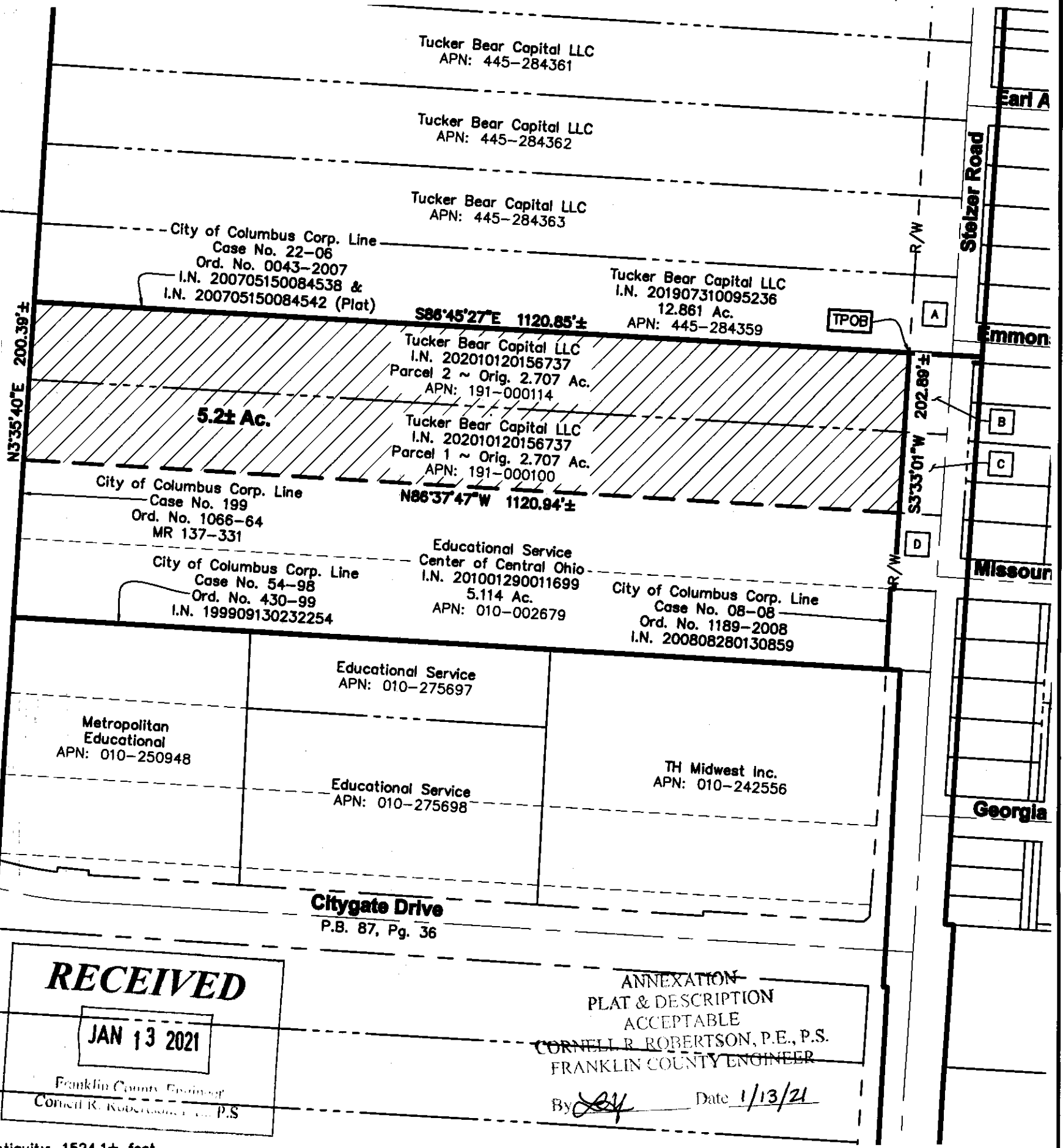


**5.2± ACRE ANNEXATION FROM THE  
TOWNSHIP OF MIFFLIN  
TO THE CITY OF COLUMBUS**  
Quarter Township 3, Township 1, Range 17  
Mifflin Township, Franklin County, Ohio



Trustees Agler Rd Parcel  
APN: 010-143575

Avistone Citygate H LLC et al  
I.N. 201711200164330  
11.689 Ac.  
APN: 010-265872



**RECEIVED**  
JAN 13 2021  
Franklin County Engineer  
Cornell R. Robertson, P.E., P.S.

ANNEXATION-  
PLAT & DESCRIPTION  
ACCEPTABLE  
CORNELL R. ROBERTSON, P.E., P.S.  
FRANKLIN COUNTY ENGINEER  
By *[Signature]* Date 1/13/21

Length of Contiguity: 1524.1± feet  
Total Length of Perimeter: 2645.1± feet  
Percentage of Contiguity: 57.6±%

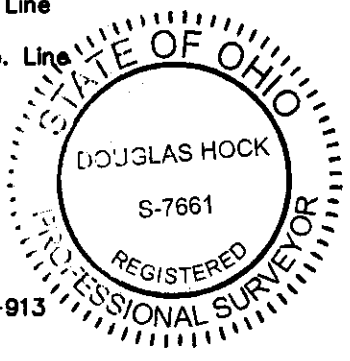
No islands of township property are created by this annexation.

**Legend**

- Area to be Annexed
- Existing City of City of Columbus Corp. Line
- Proposed City of City of Columbus Corp. Line

- A** Franklin County Commissioners  
I.N. 200406300152470  
Parcel 28WD  
0.666 Ac.
- B** Franklin County Commissioners  
200407090159978  
Parcel 27WD  
0.133 Ac.
- C** Franklin County Commissioners  
I.N. 200407210169344  
Parcel 26WD  
0.133 Ac.
- D** Franklin County Commissioners  
I.N. 200406300152468  
Parcel 25WD  
0.133 Ac.

*[Signature]*  
Douglas R. Hock  
Professional Surveyor No. 7661  
Date: 1/13/21



Advanced Civil Design, Inc  
781 Science Boulevard, Suite 100  
Gahanna, OH 43230  
Phone 614-428-7750

Job No.: 20-0002-913  
Date: 12/04/20

Z:\20-0002-913\DWG\PRODUCTION DRAWINGS\SURVEY\20-0002-913 5.2 ac annex.dwg Layout1 Jan 13, 2021 9:25:08am dbickham