

PROPOSED ANNEXATION OF 22.0 ± ACRES TO THE CITY OF COLUMBUS FROM FRANKLIN TOWNSHIP & NORWICH TOWNSHIP

City of Columbus
Case #: 38-00
Ord. No. 2112-00
I.N. 200011150231301

Franklin County Commissioners
I.N. 199807080170993
38-WD - 1.318 Ac. (D)

City of Columbus
D.B. 1507, PG. 396
560-154646 (Parcel No. 1)
215.670 Ac. (D)

Franklin County Commissioners
O.R. 982 J03
2WD - 0.0395 Ac. (D)

Ex. City of Columbus
Corporation Line
Case #: 12-69
Ord. No. 1239-69
Recorded: Misc 148, Pg. 277

Franklin County Commissioners
Standard Highway Easement
I.N. 202308170084069
1SH
0.095 Ac. (D)

TRABUE RD. (VARIES)
(PUBLIC ROADWAY)
RR 16 Pg. 44 & RR 7, Pg. 435

City of Columbus, Ohio
O.R. 12785 I20
1.563 Ac. (D)

SCIOTO WOODS
SECTION 1
PLAT BOOK 71 PAGE 70

Franklin County Commissioners
O.R. 1078 I19
1WD - 0.1665 Ac. (D)

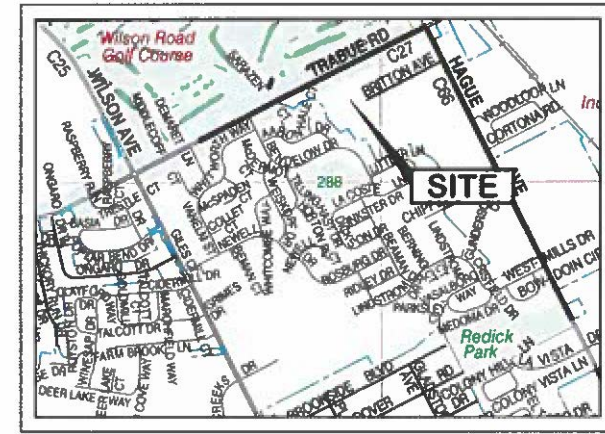
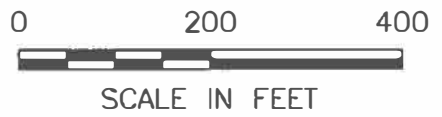
City of Columbus
Case #: 34-71
Ord. No. 1843-71
Misc. Record 155 Pg. 052

ANNEXATION ACREAGE BREAKDOWN

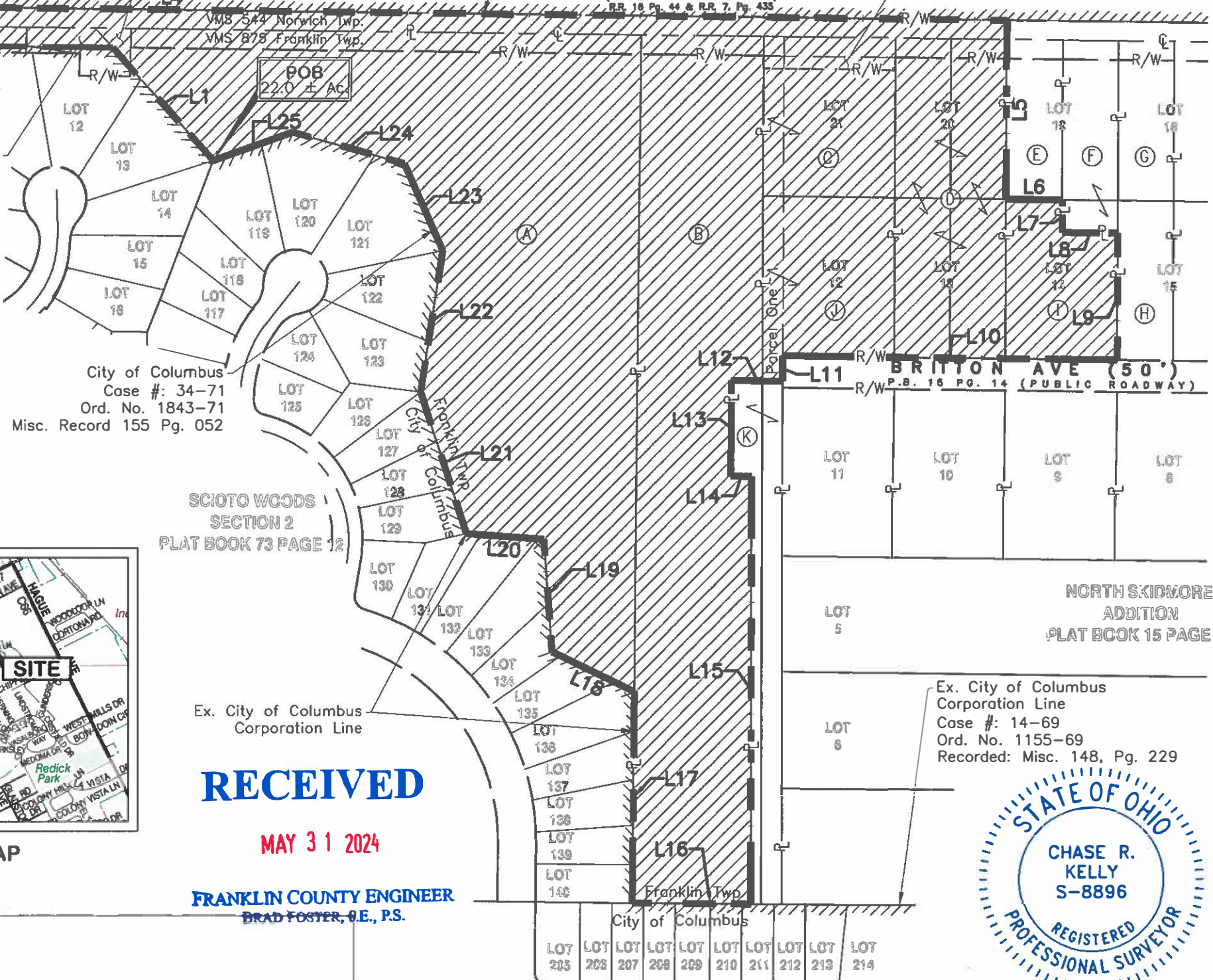
PARCEL ID	ACREAGE	TOWNSHIP
140-002393	0.9± AC.	Franklin
140-002392	0.5± AC.	Franklin
140-002399	0.5± AC.	Franklin
140-003351	0.5± AC.	Franklin
140-003352	0.5± AC.	Franklin
140-002391	1.2± AC.	Franklin
140-002400	1.2± AC.	Franklin
140-004031	5.7± AC.	Franklin
140-004316	8.3± AC.	Franklin
560-154646	1.8± AC.	Norwich
R/W (Norwich Twp)	0.05± AC.	Norwich
R/W (Franklin Twp)	0.85± AC.	Franklin

TOTAL: 22.0± AC. (TO CITY OF COLUMBUS)

**ANNEXATION
PLAT & DESCRIPTION
ACCEPTABLE**
BRAD FOSTER, P.E., P.S.
FRANKLIN COUNTY ENGINEER
BY: *BF* DATE: 5/31/2024



LOCATION MAP
Not To Scale



RECEIVED

MAY 31 2024

FRANKLIN COUNTY ENGINEER
BRAD FOSTER, P.E., P.S.



BY: *Chase R. Kelly* 5-31-24
Chase R. Kelly, P.S., E.I.
Registered Surveyor No. 8896

DRWN BY CK CHK BY GGB DATE 2024-05-30

- LEGEND**
- Property Line
 - Centerline of Roadway
 - Right-of-Way
 - POB Point of Beginning
 - POC Point of Commencement
 - Proposed Annexation
 - Existing City of Columbus Corp. Line

Total perimeter of annexation is 8224.9± feet, of which 6,001.2± feet is contiguous with the City of Columbus by Case Number 14-69 (Ordinance Number 1155-69, City of Columbus), Case Number 34-71 (Ordinance Number 1843-71, City of Columbus), Case Number 38-00 (Ordinance Number 2112-00, City of Columbus) and Case Number 12-69 (Ordinance Number 1239-69, City of Columbus) giving 73% border continuity.

This annexation does not create an island of unincorporated areas within the limits of the area to be annexed.

This exhibit is for annexation purposes only and is not to be used for transfer.

E. P. FERRIS AND ASSOCIATES INC

2130 QUARRY TRAILS DR, 2ND FLOOR
COLUMBUS, OHIO 43228
(614) 299-2999
(614) 299-2992 (Fax)
www.EPFERRIS.com

Consulting Civil Engineers and Surveyors

PROPOSED ANNEXATION OF 22.0 ± ACRES TO THE CITY OF COLUMBUS FROM FRANKLIN TOWNSHIP & NORWICH TOWNSHIP

State of Ohio, County of Franklin, Township of Franklin
Virginia Military Survey Nos. 544 & 875

LINE TABLE		
LINE #	LENGTH	DIRECTION
L1	237.8±	N66° 23' 53"W
L2	1220.6±	S66° 21' 07"W
L3	60.0±	N23° 38' 53"W
L4	2626.1±	N66° 21' 07"E
L5	279.6±	S24° 17' 53"E
L6	88.0±	N66° 21' 07"E
L7	50.8±	S24° 17' 53"E
L8	86.6±	N66° 21' 07"E
L9	198.8±	S24° 17' 53"E
L10	523.6±	S66° 21' 07"W
L11	39.6±	S24° 17' 53"E
L12	80.5±	S66° 40' 12"W
L13	150.3±	S24° 17' 53"E
L14	32.0±	N66° 36' 22"E
L15	669.0±	S24° 17' 53"E
L16	186.2±	S66° 05' 46"W
L17	330.6±	N23° 52' 53"W
L18	143.5±	N88° 33' 02"W
L19	176.9±	N28° 33' 51"W
L20	122.6±	S69° 46' 55"W
L21	233.4±	N42° 20' 24"W
L22	223.6±	N15° 35' 14"W
L23	149.4±	N48° 23' 14"W
L24	183.4±	S81° 06' 46"W
L25	132.1±	S45° 58' 32"W

OWNERS

- Ⓐ Myflori, LLC
I.N. 201601190006746
PID: 140-004316
8.115 Ac. (D)
- Ⓑ V3 Group LLC
I.N. 201904300049592
PID: 140-004031
5.595 Ac. (D)
- Ⓒ Arbook, LLC
I.N. 202206070085370
PID: 140-002400
1.188 Ac. (D)
- Ⓓ KATHLEEN ANN CHAPIN, STEVEN JOHN CHAPIN, AND KAREN CHAPIN OHLEMACHER
I.N. 202304140035895
I.N. 201512150175126
O.R.V. 24461 114
PID: 140-003351 (W 1/2 LOT 20)
PID: 140-002399 (E 1/2 LOT 20)
PID: 140-003352 (W 1/2 LOT 13)
PID: 140-002392 (E 1/2 LOT 13)
- Ⓔ 3681 Trabue LLC
I.N. 201710160143932
PID: 140-002398
- Ⓕ SHAFFER INVESTMENT CO., LLC
I.N. 202405230050762
PID: 140-004190
0.601 AC.
- Ⓖ 3667 Trabue LLC
I.N. 201908260109003
PID: 140-000396
- Ⓗ Ronald Brown
I.N. 202302060011505
PID: 140-006499
- Ⓘ SHAFFER INVESTMENT CO., LLC
I.N. 202405230050762
PID: 140-002393
0.899 AC.
- Ⓙ GARSHAR Asset Mgmt., LLC
I.N. 201709120127090
PID: 140-002391
Remainder of Parcels One, Two & Three
- Ⓚ Michael D. Trettel
I.N. 200710260186688
PID: 140-004302 (Parcel No. 1)
PID: 140-005357 (Parcel No. 2)



2130 QUARRY TRAILS DR, 2ND FLOOR
COLUMBUS, OHIO 43228
(614) 299-2999
(614) 299-2992 (Fax)
www.EPFERRIS.com

Consulting Civil Engineers and Surveyors