

SITE ENGINEERING, INC.

7453 EAST MAIN STREET
REYNOLDSBURG, OHIO 43068
PHONE: (614) 759-9900

FILE #4265
DATE: JAN 23

EXHIBIT "A" PAGE 2 of 2

SCALE: 1" = 30'

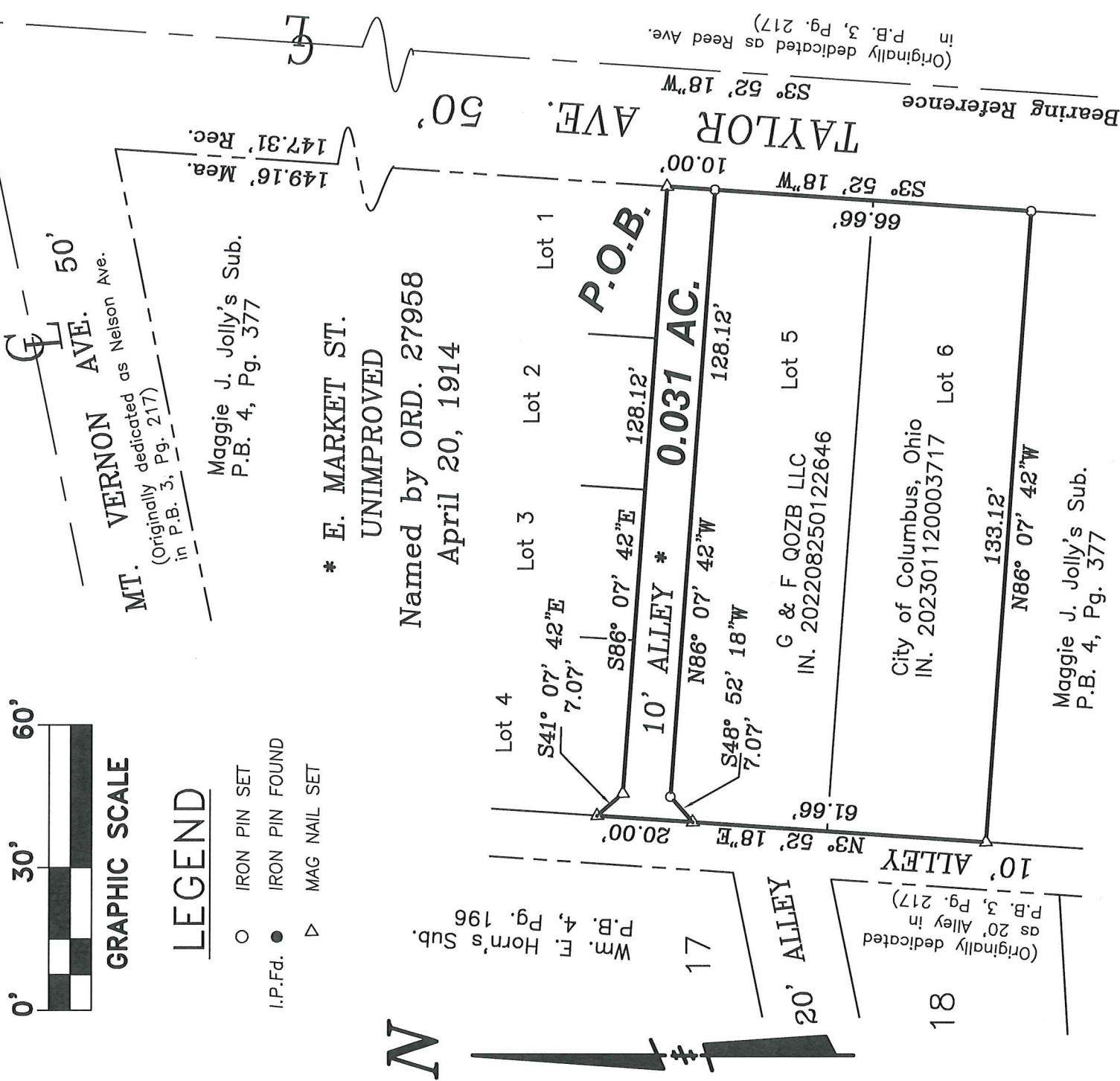
SITUATED IN THE STATE OF OHIO, COUNTY OF FRANKLIN, CITY OF COLUMBUS, HALF SECTION 14, TOWNSHIP 5, RANGE 22 REFUGEE LANDS, AND BEING PART OF MAGGIE J. JOLLY'S SUBDIVISION OF LOTS 1-5 OF SCOTT'S SUBDIVISION OF RECORD IN PLAT BOOK 4, PAGE 377 IN THE RECORDER'S OFFICE, FRANKLIN COUNTY, OHIO.



GRAPHIC SCALE

LEGEND

- IRON PIN SET
- IRON PIN FOUND
- ▷ MAG NAIL SET



N

* E. MARKET ST.
UNIMPROVED
Named by ORD. 27958
April 20, 1914

MT. VERNON AVE.
(Originally dedicated as Nelson Ave. in P.B. 3, Pg. 217)

Maggie J. Jolly's Sub.
P.B. 4, Pg. 377

G & F QOZB LLC
IN. 202208250122646

City of Columbus, Ohio
IN. 202301120003717

Maggie J. Jolly's Sub.
P.B. 4, Pg. 377

THIS PLAT WAS PREPARED FROM A SURVEY BY SITE ENGINEERING, INC. DURING JANUARY 2023. BEARINGS ARE REFERENCED TO CENTERLINE OF TAYLOR AVE. AS S 03° 18' 52" W OBTAINED USING O.D.O.T CORS (NAD 83, GEIOD 12B) AND ALL OTHER ANGLES WERE CALCULATED FROM THIS MERIDIAN. THE IRON PINS SET ARE 5/8" REBARS, 30" LONG WITH YELLOW PLASTIC CAP STAMPED "SITE ENG INC".



SITE ENGINEERING, INC.

Mark A. Hazel, p.s. 2-9-23

Professional Surveyor #7039