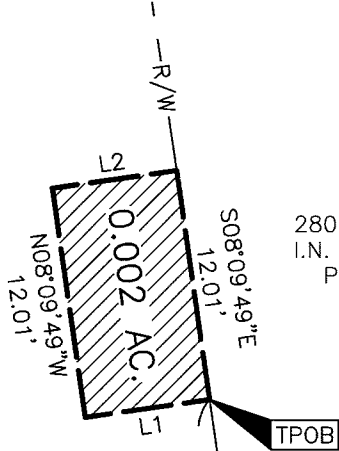




Engineers, Surveyors, Planners, Scientists  
5500 New Albany Road, Columbus, OH 43054  
emht.com

**BALCONY ENCROACHMENT EASEMENT**  
BETWEEN ELEVATION OF 772.00' TO 974.00' (NAVD 88)  
LOCATED OVER THE RIGHT-OF-WAY OF HIGH STREET  
LOT 10, SECTION 8, TOWNSHIP 5, RANGE 22, REFUGEE LANDS  
CITY OF COLUMBUS, COUNTY OF FRANKLIN, STATE OF OHIO

Date: April 14, 2026    Scale: 1" = 10'    Job No: 2025-0387    Sheet No: 1 of 1

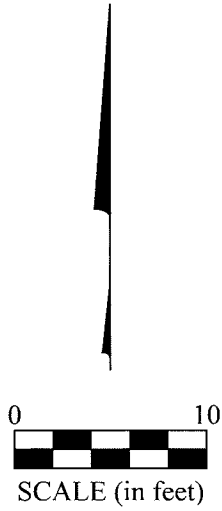


280 HIGH STREET, LLC  
I.N. 202503270030472  
P.N. 010-023466

LINE TABLE		
LINE	BEARING	DISTANCE
L1	S81°50'11"W	6.55'
L2	N81°50'11"E	6.55'



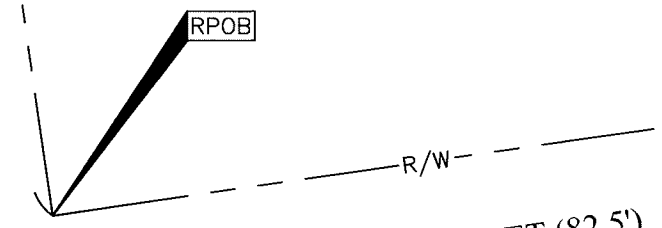
CITY OF COLUMBUS INLOTS  
\*\*P.B. F, P. 332\*\*  
P.B. 3, P. 247  
P.B. 14, P. 27



HIGH STREET (100')  
\*\*P.B. F, P. 332\*\*  
P.B. 3, P. 247  
P.B. 14, P. 27

**VERTICAL DATUM:**  
The Vertical Datum is based on the elevation established by the Franklin County Engineering Department, monument COC 13-83, being 752.140 feet in elevation. The said monument being source benchmark with elevation that is based on the North American Vertical Datum of 1988.

**\*\*NOTE:**  
Dedicated in Plat Book "F", Page 332 (destroyed by fire), replatted in Plat Book 3, Page 247, and also represented in Plat Book 14, Page 27.



CHESTNUT STREET (82.5')  
\*\*P.B. F, P. 332\*\*  
P.B. 3, P. 247  
P.B. 14, P. 27

By Heather L. King    Date 4/20/26  
Heather L. King  
Professional Surveyor No. 8307  
hking@emht.com

J:\20250740\Drawg\04\Sheets\Easements\20250740-VS-ESMT-ENCR-BALC-03.dwg plotted by King, Heather on 4/20/2026 11:35:37 AM last saved by hking on 4/20/2026 11:34:15 AM