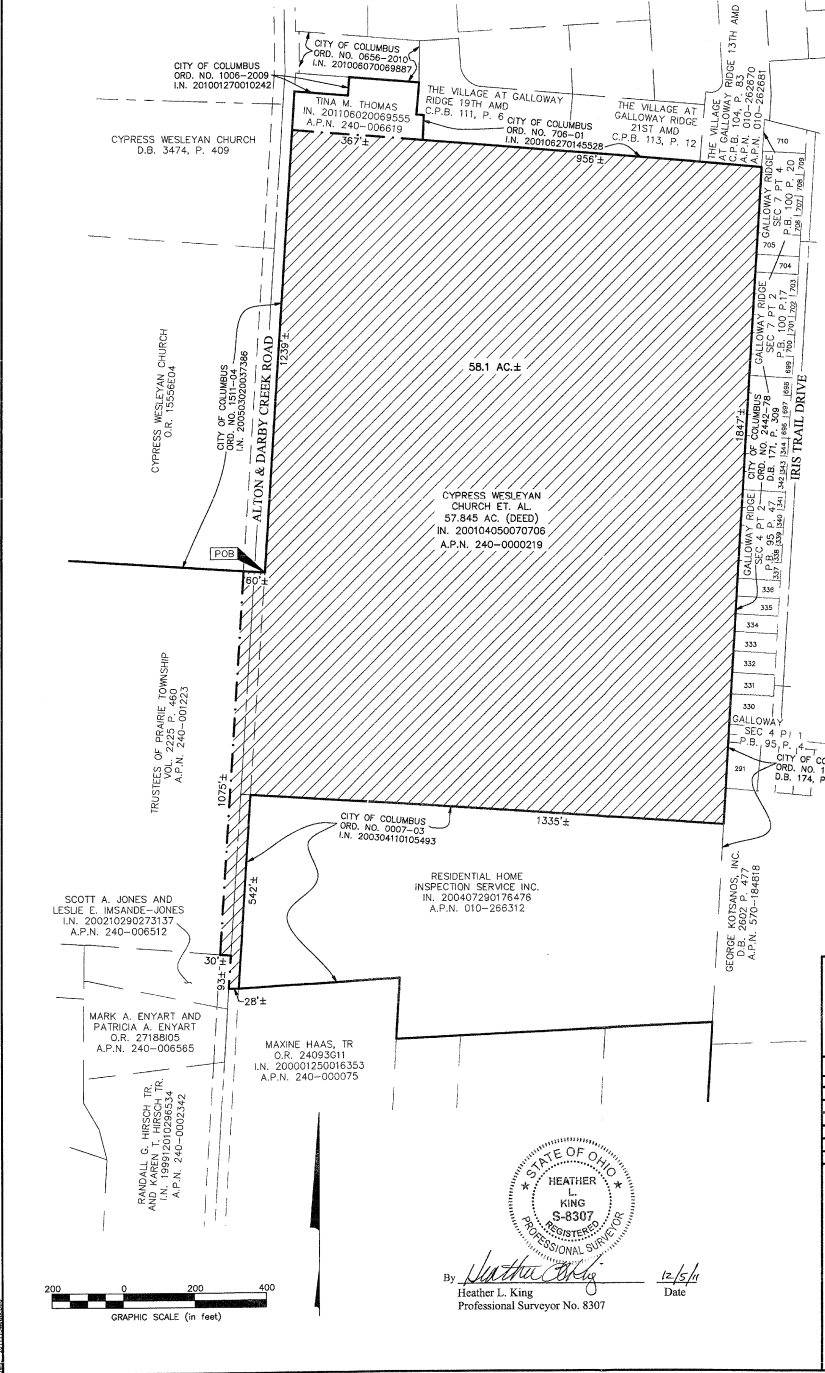


ANNEXATION MAP - AN12-001
 58.1 acres in Prairie Township
 Cypress Wesleyan Church

ANNEXATION OF 58.1± ACRES
TO THE CITY OF COLUMBUS FROM PRAIRIE TOWNSHIP
VIRGINIA MILITARY SURVEY NO. 5240
TOWNSHIP OF PRAIRIE, COUNTY OF FRANKLIN, STATE OF OHIO



LOCATION MAP AND BACKGROUND DRAWING
 NOT TO SCALE



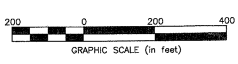
RECEIVED
 DEC 06 2011
 Franklin County Engineer
 Dean C. Ringle, P.E., P.S.

AREA TO BE ANNEXED
 PROPOSED CITY OF COLUMBUS CORPORATION LINE
 EXISTING CONTIGUOUS CITY OF COLUMBUS CORPORATION LINE

Note:
 This annexation does not create islands of unincorporated areas within the limits of the area to be annexed.

Contiguity Note:
 Total perimeter of annexation area is 7572 feet, of which 5979 feet is contiguous with the City of Columbus by Ordinance Numbers 1511-04, 706-01, 224-78, 1058-80 and 0007-03, giving 79% perimeter contiguity.

ANNEXATION
 PLAT & DESCRIPTION
 ACCEPTABLE
 DEAN C. RINGLE, P.E., P.S.
 FRANKLIN COUNTY ENGINEER
 By *DR* Date 12/6/11



By *Heather L. King* Date 12/15/11
 Heather L. King
 Professional Surveyor No. 8307

EMHT		Date: August 1, 2011
Evans, Macneil, Hambleton & Titon, Inc. Engineers • Surveyors • Planners • Scientists 5500 New Albany Road, Columbus, OH 43254 Phone: 614.775.6392 Fax: 614.775.3466 emht.com		Scale: 1" = 200'
		Job No: 2011-1008
		Sheet: 1 of 1
REVISIONS		
MARK	DATE	DESCRIPTION
HLK	9/2/11	Revisions per comments
HLK	10/24/11	Revised per comments
HLK	11/2/11	Revised per comments
HLK	11/10/11	Revised per client comments