



Evans, Mechwart, Hombleton & Tilton, Inc.  
 Engineers • Surveyors • Planners • Scientists  
 5500 New Albany Road, Columbus, OH 43054  
 Phone: 614.753.4500 Fax: 614.753.3646  
 emht.com

# AERIAL ENCROACHMENT EASEMENT

BETWEEN 760.7' TO 778.5' ELEVATION (NAVD88)  
 LOCATED OVER THE RIGHT-OF-WAY OF OHIOHEALTH PARKWAY  
 QUARTER TOWNSHIP 2, TOWNSHIP 1, RANGE 18, U.S.M.L.  
 CITY OF COLUMBUS, COUNTY OF FRANKLIN, STATE OF OHIO

Date: November 30, 2017

Job No: 2016-1324

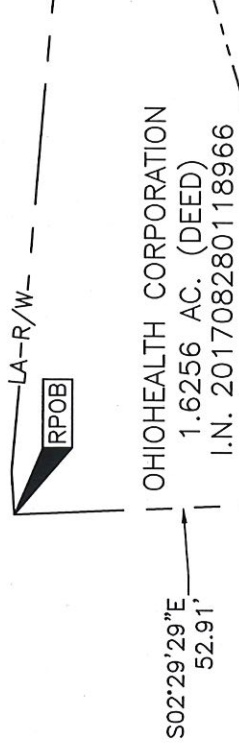
Scale: 1" = 30'

## VERTICAL DATUM:

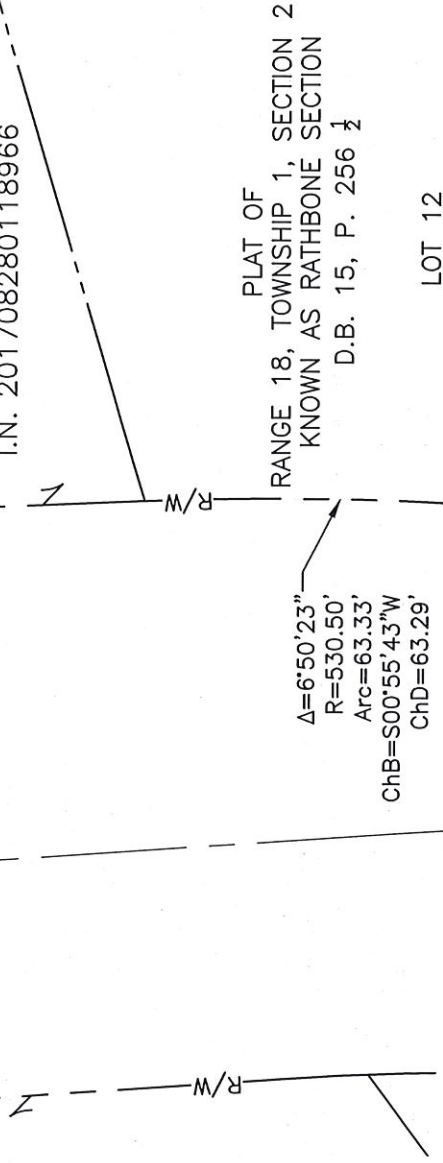
The Vertical Datum is based on the elevations established by the Franklin County Engineering Department, monument NW-1 being 739.456 feet in elevation. The said monuments being source bench marks with elevations that are based on the North American Vertical Datum of 1988.

WEST NORTH BROADWAY

FRA-315-4.77  
 P.B. 51, P. 51



OHIOHEALTH CORPORATION  
 1.6256 AC. (DEED)  
 I.N. 201708280118966

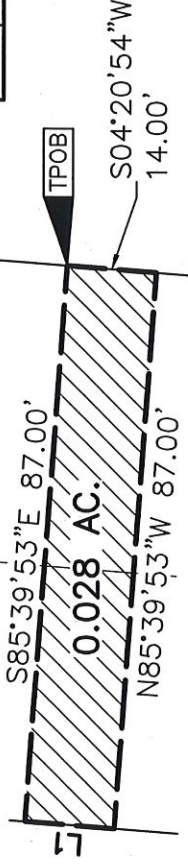


PLAT OF  
 RANGE 18, TOWNSHIP 1, SECTION 2  
 KNOWN AS RATHBONE SECTION  
 D.B. 15, P. 256 1/2

LOT 12

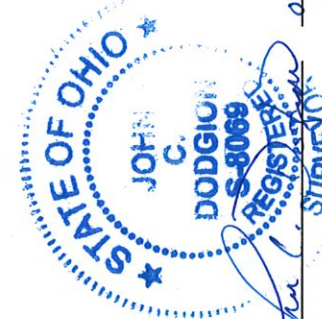
WHITE CROSS HOSPITAL  
 ASSOCIATION OF OHIO  
 (NKA OHIOHEALTH CORPORATION)  
 D.B. 1394, P. 162  
 D.B. 3435, P. 662  
 O.R. 12228H17  
 I.N. 200503080042485

OHIOHEALTH PARKWAY  
 P.B. 123, P. 70



GRAPHIC SCALE (in feet)

LINE TABLE		
LINE	BEARING	DISTANCE
L1	N04°20'54\"E	14.00'



By *John C. Dodgion* Date *01/19/2018*  
 John C. Dodgion  
 Professional Surveyor No. 8069