

# OLENTANGY RESERVE

SITUATED IN THE STATE OF OHIO, COUNTY OF DELAWARE, CITY OF COLUMBUS, FARM LOT 2 QUARTER SECTION 3, TOWNSHIP 3, RANGE 18 U.S. MILITARY LANDS. BEING ALL OF A 6.000 ACRE TRACT AS CONVEYED TO OLENTANGY RESERVE, LLC., IN OFFICIAL RECORD 1476, PAGE 2045-2047, RECORDER'S OFFICE, DELAWARE COUNTY, OHIO.

SUBCARRIER COMMUNICATIONS, INC.  
1.227 ACRES  
OR 1177, PGS. 1523-1526

SUBCARRIER COMMUNICATIONS, INC.  
1.227 ACRES  
OR 1177, PGS. 1523-1526

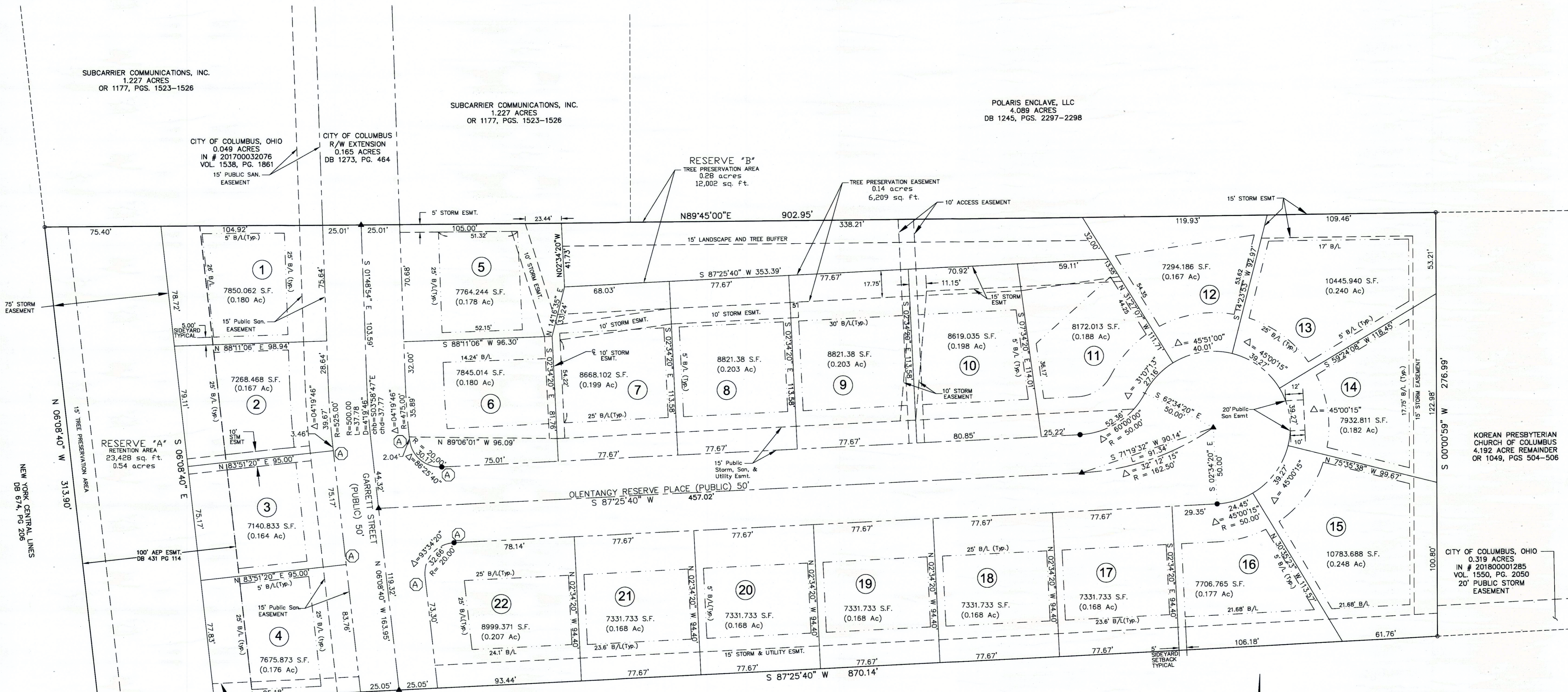
POLARIS ENCLAVE, LLC  
4.089 ACRES  
DB 1245, PGS. 2297-2298

CITY OF COLUMBUS, OHIO  
0.049 ACRES  
IN # 201700032076  
VOL. 1538, PG. 1861  
15' PUBLIC SAN. EASEMENT

CITY OF COLUMBUS  
R/W EXTENSION  
0.165 ACRES  
DB 1273, PG. 464

RESERVE "B"  
TREE PRESERVATION AREA  
0.28 ACRES  
12,002 sq. ft.

TREE PRESERVATION EASEMENT  
0.14 ACRES  
6,209 sq. ft.



RESERVE "A"  
RETENTION AREA  
23,428 sq. ft.  
0.54 acres

KOREAN PRESBYTERIAN  
CHURCH OF COLUMBUS  
4.192 ACRE REMAINDER  
OR 1049, PGS 504-506

CITY OF COLUMBUS, OHIO  
0.319 ACRES  
IN # 20180001285  
VOL. 1550, PG. 2050  
20' PUBLIC STORM EASEMENT

NOTE:  
NO VEHICULAR ACCESS UNTIL  
RIGHT-OF-WAY EXTENDED BY  
PLAT OR DEED.

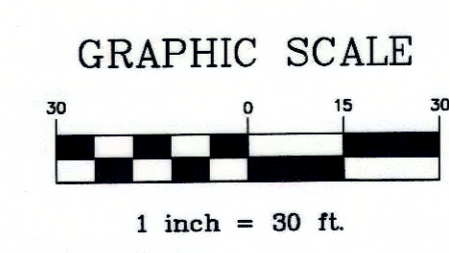
NOTE:  
NO VEHICULAR ACCESS AND NO DRIVE  
INSTALLATIONS ARE PERMITTED  
ACROSS ADA RAMP LOCATIONS.

COLUMBUS AND SOUTHERN POWER COMPANY  
9.00 ACRES  
DB 598, PGS 819-820

SURVEYED & PLATTED BY:  
Columbus, Ohio  
**TERRATEK**  
LAND SURVEYING & MAPPING

BASIS OF BEARINGS:  
The bearings shown hereon are based upon the  
northerly line of a 6,000 acre tract as shown in Deed  
Book 1476, Page 2045-2047 as being N 89°45'00"E.

Development Plan Reference:  
SANITARY CC PLANS 17878  
DRAWER E DRAWING 3426



LEGEND

- FOUND IRON PIN
- SET 5/8" REBAR W/CAP STAMPED TERRATEK
- ▲ SET 1" DIAMETER SOLID IRON PIN WITH PUNCH MARK