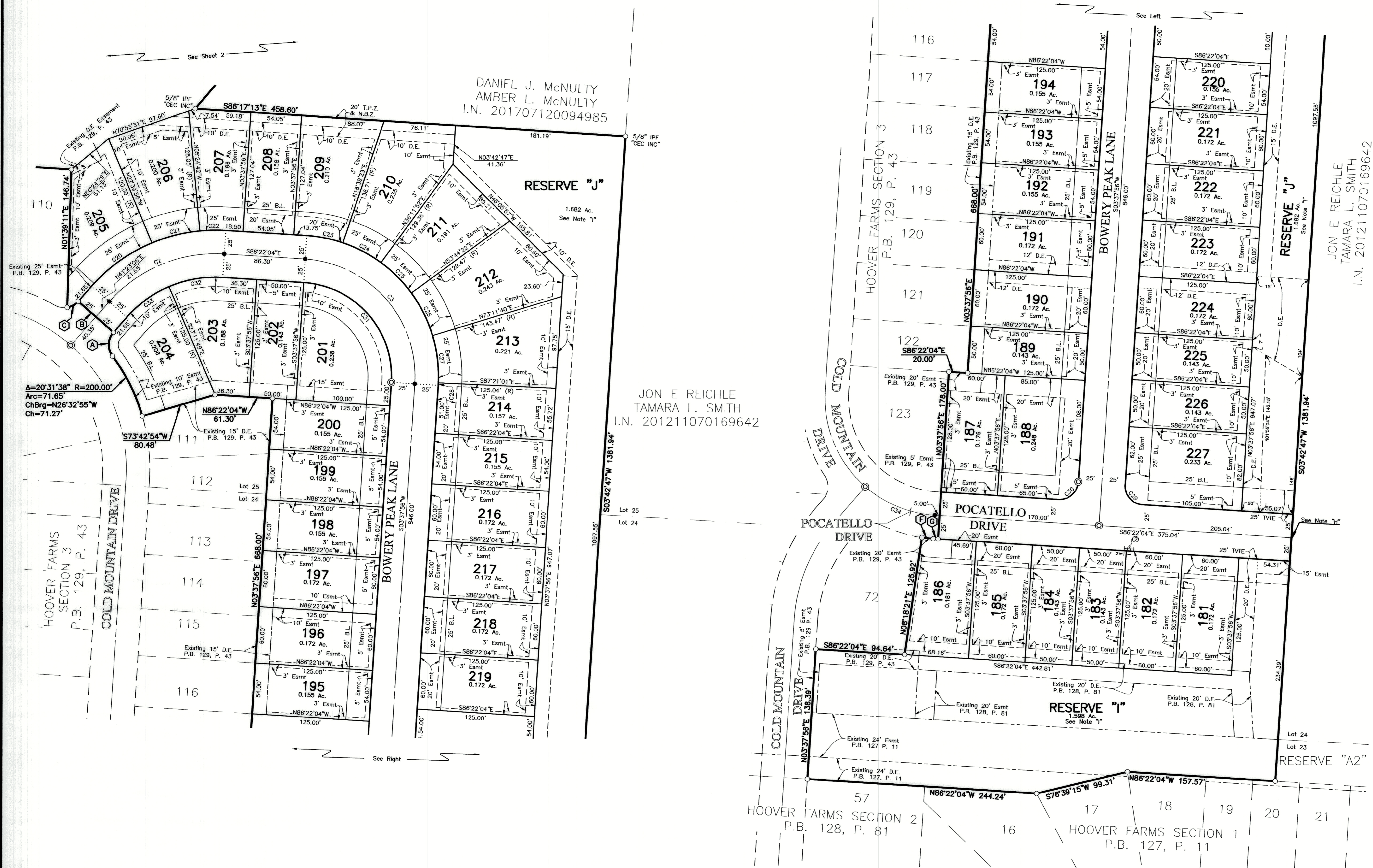


HOOVER FARMS SECTION 5



DANIEL J. McNULTY
 AMBER L. McNULTY
 I.N. 201707120094985

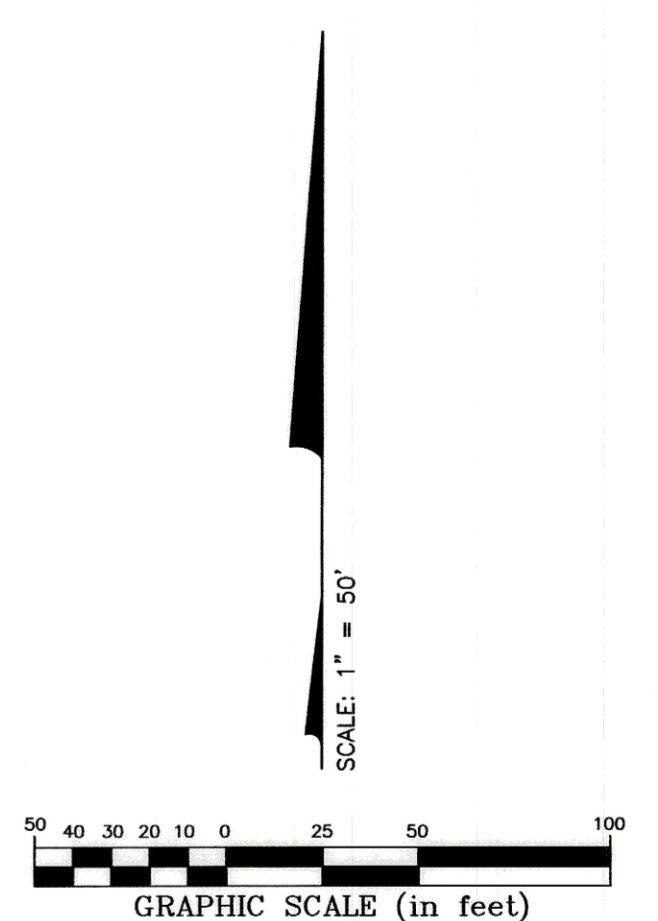
RESERVE "J"
 1.682 Ac.
 See Note "I"

JON E REICHL
 TAMARA L. SMITH
 I.N. 201211070169642

JON E REICHL
 TAMARA L. SMITH
 I.N. 201211070169642

- (A) $\Delta=78^{\circ}11'50''$ R=20.00'
 Arc=27.30'
 ChBrg=N02°17'11"E
 Ch=25.23'
- (B) N48°36'54"W
 50.00'
- (C) $\Delta=39^{\circ}05'55''$ R=20.00'
 Arc=13.65'
 ChBrg=S60°56'03"W
 Ch=13.38'
- (D) $\Delta=4^{\circ}40'25''$ R=150.00'
 Arc=12.24'
 ChBrg=S84°01'52"E
 Ch=12.23'
- (E) S86°22'04"E
 5.00'

- Line Type Legend
- Existing Property Line
 - Existing R/W Line
 - Existing R/W Centerline
 - Existing Easement Line
 - Proposed Subdivision Boundary Line
 - Proposed Lot Line
 - Proposed R/W Line
 - Proposed R/W Centerline
 - Proposed Easement Line



- B.L. = Building Line
 - Esmt = Easement
 - D.E. = Drainage Easement
 - TVTE = Temporary Vehicle Turnaround Easement
 - See Note "M"
 - T.P.Z. = Tree Preservation Zone
 - See Note "N"
 - N.B.Z. = No Build Zone
 - See Note "N"
- ① No Vehicular Access - See Note "K"
 ② 10' No Vehicular Access - See Note "L"

A:\2020\2020\DWG\CASHIERS\PLAT_20200266-AS-PLAT-SECS.DWG plotted by KIRK, MATTHEW on 1/20/2021 6:48:57 AM
 KIRK, MATTHEW
 20181005-AS-PLAT-SECS.DWG & 20200266-AS-REFR-N.DWG