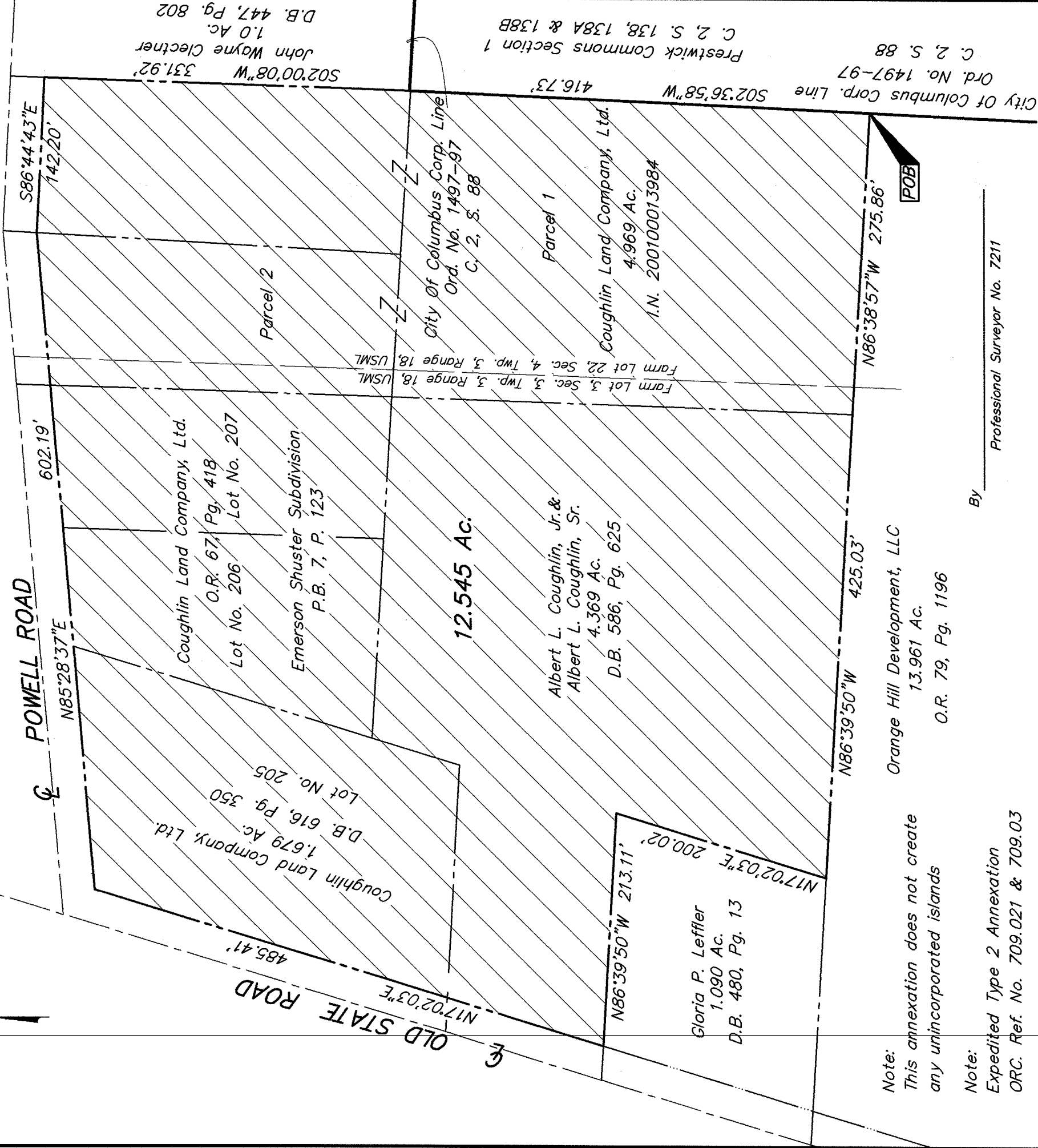


PLAT OF ANNEXATION

LOCATED IN
FARM LOTS 3 & 22, SECTIONS 3 & 4, TOWNSHIP 3, RANGE 18
UNITED STATES MILITARY LANDS
 ORANGE TOWNSHIP, DELAWARE COUNTY, OHIO



Note:
 This annexation does not create
 any unincorporated islands

Note:
 Expedited Type 2 Annexation
 O.R.C. Ref. No. 709.021 & 709.03

Note:
 Total perimeter of
 annexation area is
 3092.45 feet, of which
 416.73 feet is contiguous with
 the City of Columbus Municipality
 (Ord. No. 1497-97), giving
 13% perimeter contiguity.



GRAPHIC SCALE
 (IN FEET)

By _____
 Professional Surveyor No. 7211

EXISTING CITY OF COLUMBUS CORP. LINE
 PROPOSED CITY OF COLUMBUS CORP. LINE
 AREA TO BE ANNEXED

ANNEX NO. _____ ORD NO. _____
 PROPOSED ANNEXATION OF 12.545 ACRES
 TO THE
 CITY OF COLUMBUS
 FROM
 ORANGE TOWNSHIP, DELAWARE COUNTY, OHIO
 DATE APRIL 2003 SCALE 1" = 100'